



WIRELESS CHARGING PHONE CRADLE USER GUIDE

Description	Part Number
Wireless Charging Phone Cradle with USB plug	AS7.U050.013
Wireless Charging Phone Cradle with bare wire	AS7.U050.013-1
Phone Cradle (no electronics)	AS7.U050.013-2
XL Wireless Charging Phone Cradle with USB plug	AS7.U050.014
XL Wireless Charging Phone Cradle with bare wire	AS7.U050.014-1
XL Phone Cradle (no electronics)	AS7.U050.014-2

Mobile device (including case) size compatibility:

Standard models: Height 5.3"(135mm) – 6.33"(161mm), Max width 3.07"(78mm), Max depth 0.5"(13mm)
XL models: Height 6.0"(152mm) – 7.03"(179mm), Max width 3.27"(83mm), Max depth 0.5"(13mm)

Note: Some mobile device and case combinations may not be fully compatible with these cradles. Irregularities in corner radius dimensions, tapers, protrusions, materials, etc will affect if a device and/or case will fully function with these cradles.

GENERAL INSTRUCTIONS

SAFETY:

- Safety is dependent on the proper installation and servicing of this product. It is important to read and follow all instructions before installing this product.
- Proper installation requires a good understanding of automotive electrical systems and is recommended to be performed by qualified technicians only.
- There are no adjustments or user serviceable parts within the cradle. Removing the shield will void the product warranty.
- Do not install equipment or route wires in the deployment path of any air bag, or where it may interfere with critical safety or operating controls of any vehicle.
- Visually inspect the device before using. If it is damaged do not use.
- It is normal behavior for the cradle and device to raise in temperature when charging wirelessly. PMT recommends using directed cool air to provide cooling, and not charge for long periods in direct sunlight on hot days. Use caution removing your device from the cradle in case of excessive heat buildup.

POWER:

- Input: 5v 2A, 9v 1.67A, 12v 1.5A, 19v 1.2A
- Output: 5v 1A, 9v 1.1A, 12v 1.25A
- Product standard: WPC-Qi V.1.2.4
- If input voltage < 4v the transmitter will stop working. When input voltage returns to the specified range the transmitter will resume normal operation.

WIRING:

- For bare wire models connect the red wire to a fused 12v DC nominal positive (+) source, and the black wire to a good negative (-) ground. Be cautious and observe polarity to prevent damage to the charger.
- For models with USB type A male connectors, use a standard USB 2.0 compliant or above type A female port.
- Visit www.precisionmounts.com/support/installation-user-guides.html for a copy of our general wiring and troubleshooting guide.

Proper Use and Care:

- Proper care and use of this product is critical to maximize safety and to prevent damage.
- It is critical that that device to be charged is as close to the surface of the wireless charger as possible (5-8mm).
- Extra thick cases may prevent or reduce charger function.
- Do not store foreign objects in the cradle.
- Clean the top surface with damp cloth periodically.
- Do not use harsh chemicals or cleaners to clean the device.

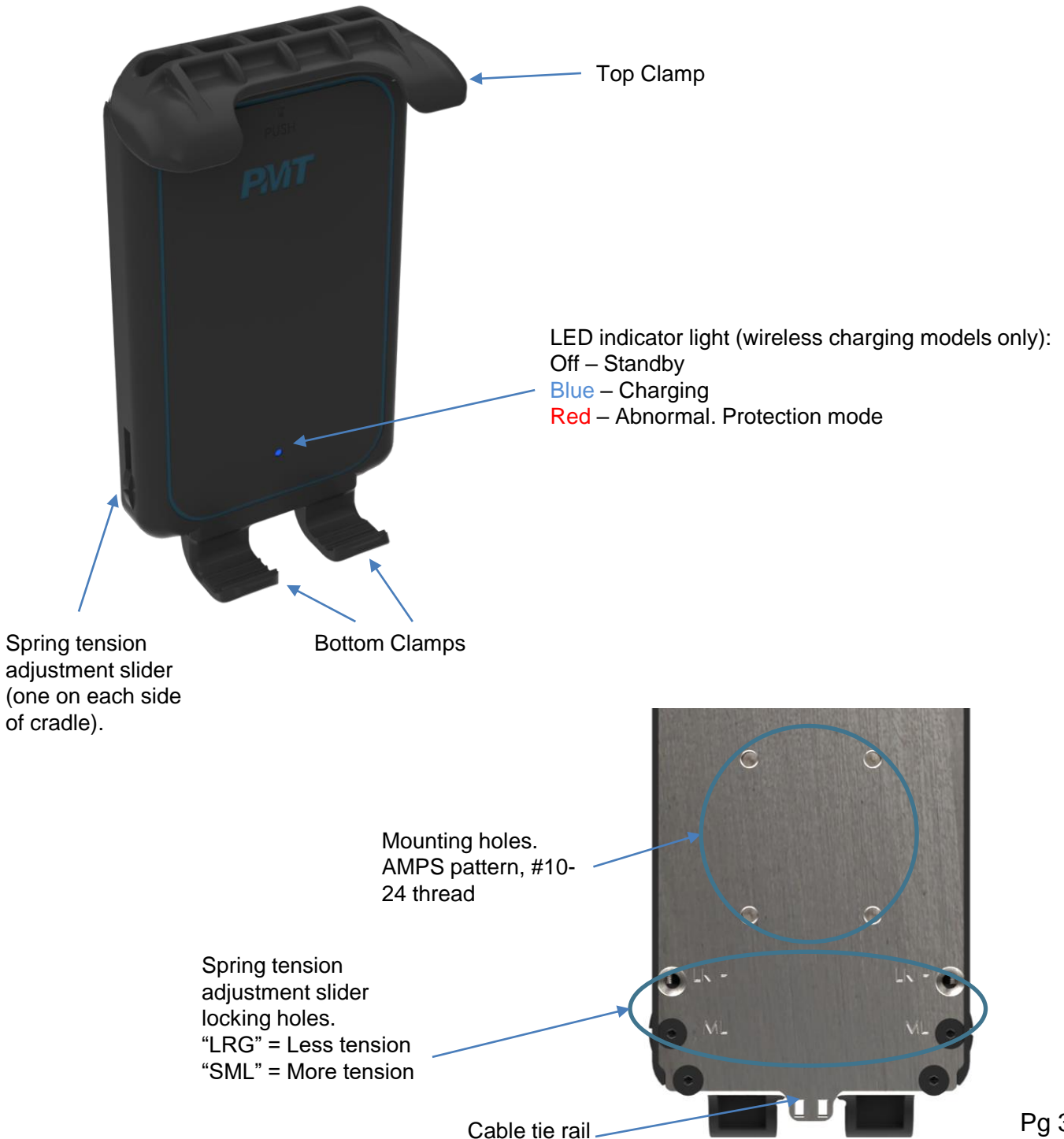
Environmental:

- Storage: -20°C to 80°C (-4°F to 176°F)
- Operating: 0°C to 40°C (32°F to 104°F)

Product Mounting Disclaimer

Precision Mounting Technologies Ltd (PMT) are not liable under any theory of contract or tort law for any loss, damage, personal injury, special, incidental or consequential damages for personal injury or other damage of any nature arising directly or indirectly as a result of the improper installation or use of its products in vehicle or any other application. In order to safely install and use PMT products full consideration of vehicle occupants, vehicle systems (i.e., the location of fuel lines, brake lines, electrical, drive train or other systems), air-bags and other safety equipment is required. PMT specifically disclaims any responsibility for the improper use or installation of its products not consistent with original vehicle manufactures' specifications and recommendations, PMT product instruction sheets, or workmanship standards as endorsed through PMT policies and EULA.

PARTS & HARDWARE DESCRIPTION



CRADLE SETUP

Step 1:

Adjust spring position according to mobile device size and desired tension. Note that greater tension provides better stability, however, does increase the amount of force required to load a mobile device.

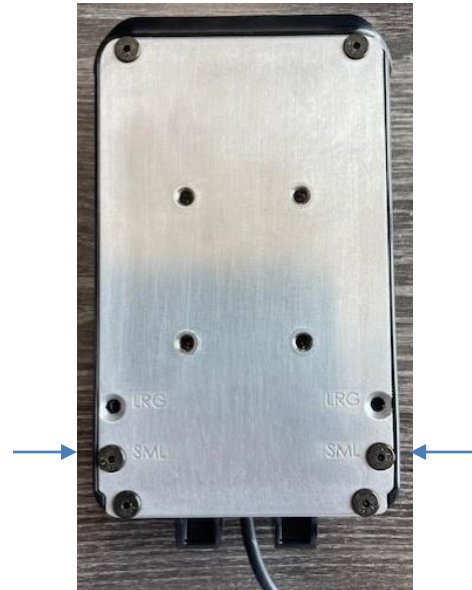
When the screws are positioned in the holes labeled “LRG” there will be less tension, and when the screws are installed in the “SML” position there will be more tension.

The “SML” positions should be used for devices apx 5.8”(147mm) in height or below. Note that one screw can be installed in the “SML” position, and one screw can be installed in the “LRG” position for further refining the tension

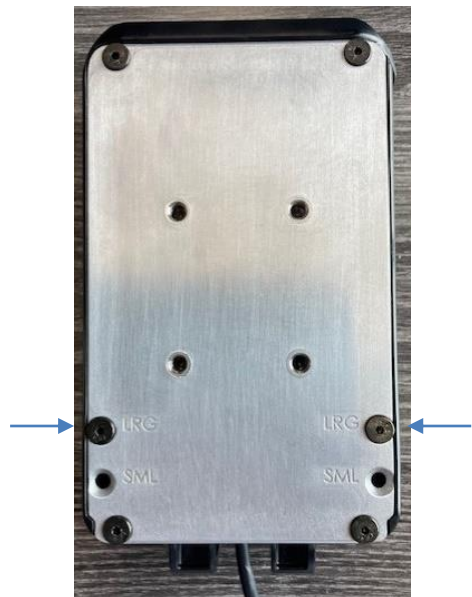
To adjust the position first remove the screws using a 1/16” hex key/wrench and with a fingernail or sharp pointed object push the slider on the sides of the cradle so that the threaded holes line up with the desired location and then re-insert and tighten the screws. PMT does recommend using blue Loctite 243 (or equivalent) on all screws.



Adjusting spring tension



Spring tension setup for small device



Spring tension setup for large device

INSTALLATION

Step 2:

Attach desired mounting plate (not included) to the back of the cradle using the supplied #10-24 x 3/8" screws and 1/8" Hex key making sure that the hardware fully tightens on mounting plate. If using a mounting plate less than 3/16" thick washers can be used in between screw and plate, or new hardware can be sourced to accommodate.

Mounting plate

#10-24 x 3/8" screw (x4)



Step 3:

Attach assembly to additional mounting infrastructure (if required). Be sure not to block access to any critical vehicle controls or safety devices and ensure infrastructure can support the weight of the device and force required to load a mobile device into the cradle repeatedly.

Step 4:

Plug in the charging cradle to either a USB 2.0 type A port, or hard wire to 12v system as outlined on pg 2.



Mounting infrastructure shown securely attached to dash of vehicle, and cradle. Zirkona mount pictured above attached to PMT Wireless Charging Cradle.

USING THE CRADLE

Loading a Mobile Device:

Load the mobile device by (1) pushing the top of the device up into the top clamp of the cradle and then (2) push the bottom of the mobile device back into the cradle and let rest on the bottom clamps.



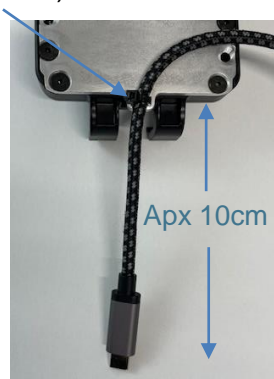
Removing a Mobile Device:

Remove the mobile device by (1) lifting it up against the top clamp of the cradle and (2) tilting the bottom edge out away from the cradle.



Cable tie ("zip-tie")

Note: If you wish to use a cable (not provided) to connect the mobile device while in the cradle you can utilize the built-in tie rail to "zip-tie" the cable for easy access. Be sure to manually remove the cable from the device before removing the mobile device from the cradle to prevent damage.



ACCESSORIES AND CERTIFICATIONS

Display Screen Mount
PMT Part# AS7.U050.012



Zirkona Mounts
PMT Part# various



Certifications and test standards:

ICES-003(A) / CISPR 32 / EN 50498
MIL-STD-810H
RoHS 3 (2015/863)
REACH

Made in Canada

This device complies with Part 15 of the FCC Rules. Operation is subject to the following two conditions. (1) this device may not cause harmful interference, and (2) this device must accept any interference received, including interference that may cause undesired operation.

