

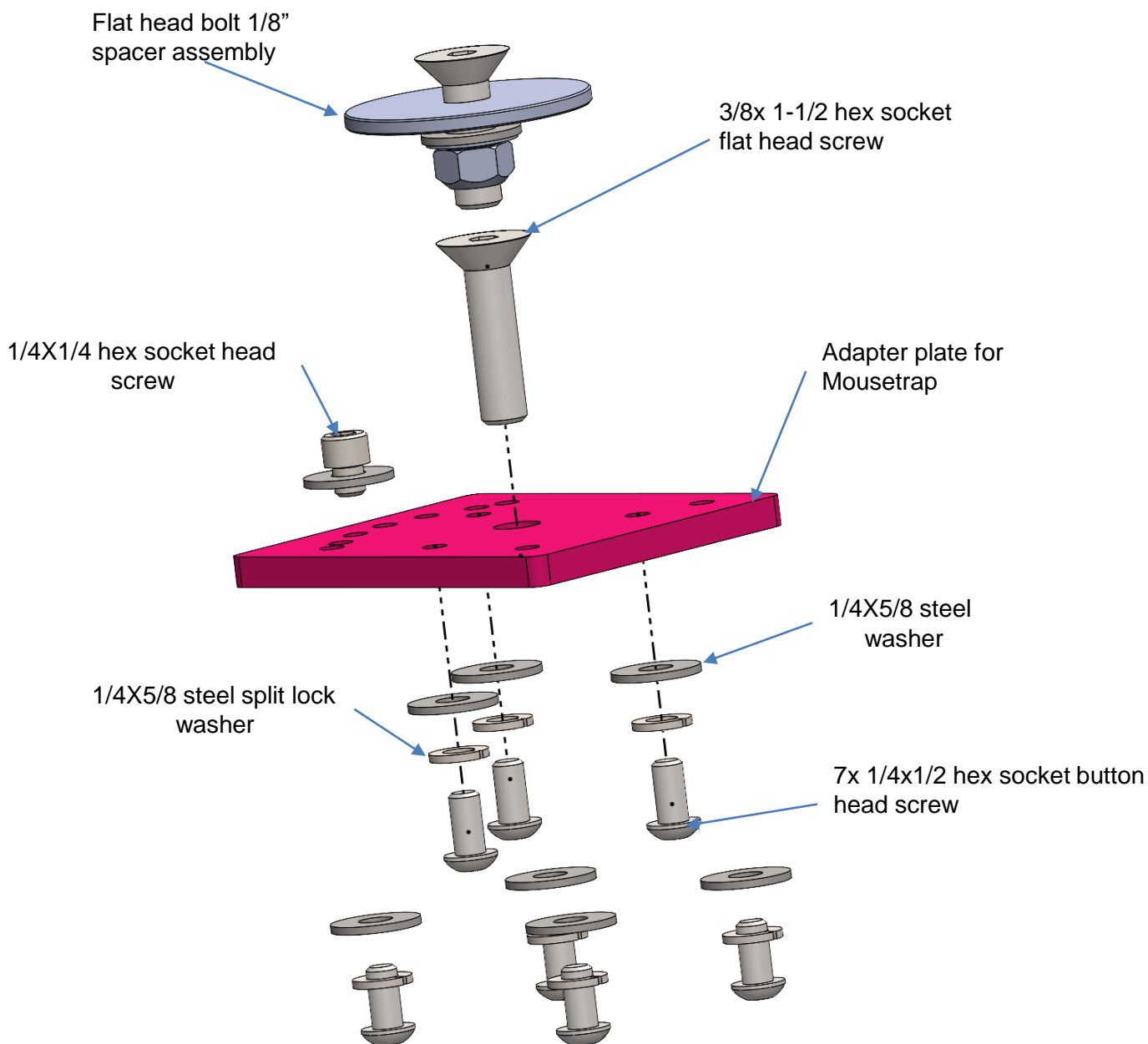


ADAPTER PLATE FOR BASELINE PEDESTAL WITH MOUSETRAP

USER GUIDE

Description	Part Number
Adapter plate for baseline pedestal with Mousetrap	AS5.N101.010

DESCRIPTION OF PARTS

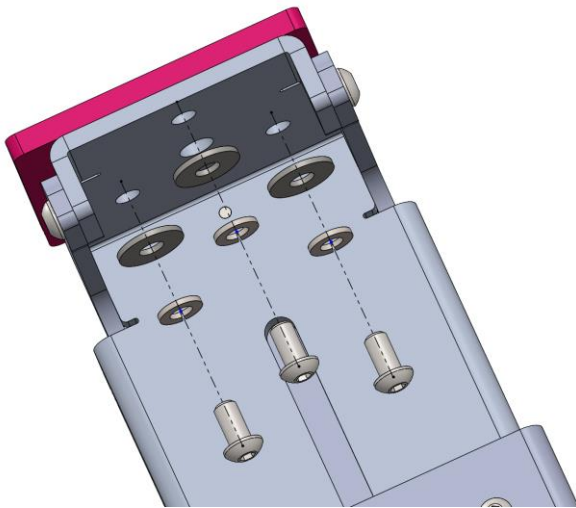


INSTALLATION

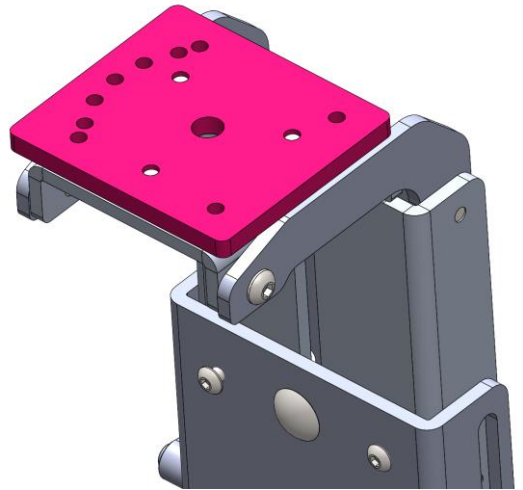
This assembly adapter plate for baseline pedestal with mousetrap AS5.N101.010 has to be used to mount the baseline pedestal AS4.P500.002 with the PMT mousetrap motion mount.

Below are the instructions to assemble:

Step 1: Assemble the adapter plate for mousetrap 50.N101.002 with the pedestal as shown below in Pic. 1; use the three 1/4x1/2 hex socket button head screw along with the 1/4x5/8 steel split lock washer and 1/4x5/8 steel washer, use 5/32 size hexagon socket tool to fasten the hardware with a torque 60-65 in-lbs



Pic. 1



Pic. 2

Step 2: Please follow the PMT mousetrap motion mount user guide to install the mousetrap on to the baseline pedestal, this can be found on the Mousetrap web pages at precisionmounts.com