



## TRIMLINE VEHICLE DOCK FOR PANASONIC TOUGHBOOK® G2 TABLET COMPUTERS USER GUIDE

Description	Part Number
DOCKING STATION FOR PANASONIC TOUGHBOOK® G2 NPT	AS7.P222.100
DOCKING STATION FOR PANASONIC TOUGHBOOK® G2 DPT	AS7.P222.102
CRADLE FOR PANASONIC TOUGHBOOK® G2	AS7.P222.104
DOCKING STATION FOR PANASONIC TOUGHBOOK® G2 LITE NPT	AS7.P222.120
DOCKING STATION FOR PANASONIC TOUGHBOOK® G2 LITE DPT	AS7.P222.122

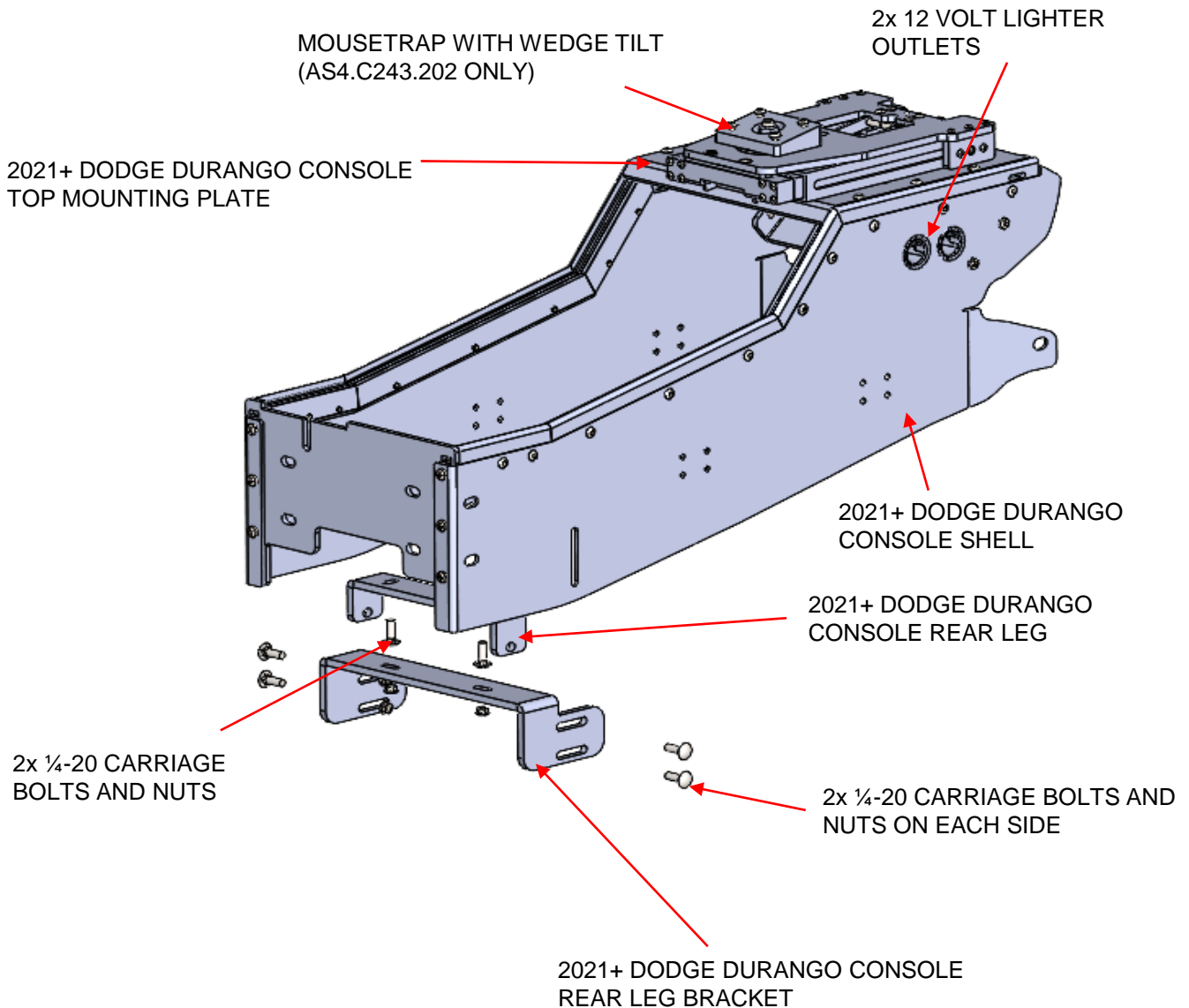
Bundles with power adapters included as a kit are available and are indicated with –PS suffix added to the part number.

#### Product Mounting Disclaimer

Precision Mounting Technologies Ltd (PMT) are not liable under any theory of contract or tort law for any loss, damage, personal injury, special, incidental or consequential damages for personal injury or other damage of any nature arising directly or indirectly as a result of the improper installation or use of its products in vehicle or any other application. In order to safely install and use PMT products full consideration of vehicle occupants, vehicle systems (i.e., the location of fuel lines, brake lines, electrical, drive train or other systems), air-bags and other safety equipment is required. PMT specifically disclaims any responsibility for the improper use or installation of its products not consistent with original vehicle manufactures' specifications and recommendations, PMT product instruction sheets, or workmanship standards as endorsed through PMT policies and EULA.



# DESCRIPTION OF PARTS



## NOTE

Standard docking stations are not compatible with TOUGHBOOK G2 tablet device's using a hand strap attached to the rear of the tablet, or an extended battery (Extended Battery Model # FZ-VZSU1UU). Access to other rear mounted features of the tablet might also be affected (fingerprint reader, smart card reader, HF RFID reader, and touch pen).

# INSTALLATION INSTRUCTIONS

## Tools and hardware required:

- Socket set suitable for #1/4-20 wrench
- Socket set suitable for #10-24 Hex Allen key
- Socket, 10mm

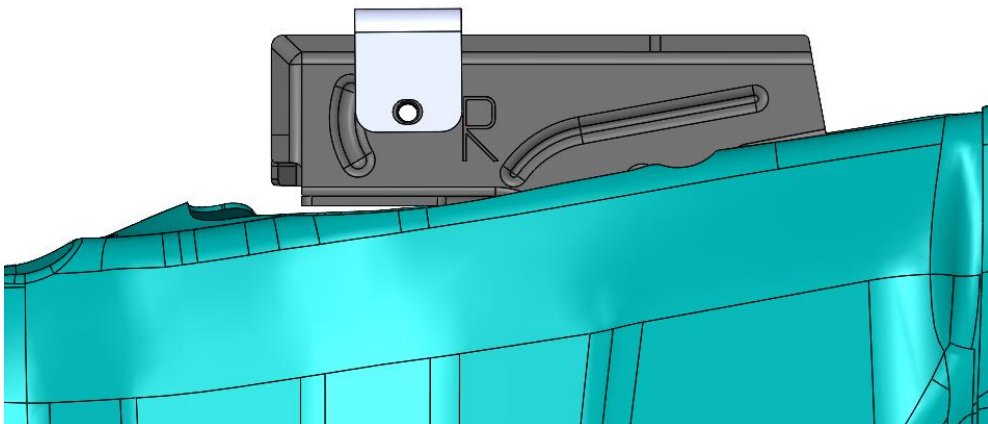
## Step 1

Remove OEM center plate with 10mm socket, 2 bolts in front under the center dash and 2 in the back (For the back bolts, it's easier to slide the seat forward to gain better access). Keep OEM bolts as needed to install PMT console



## Step 2

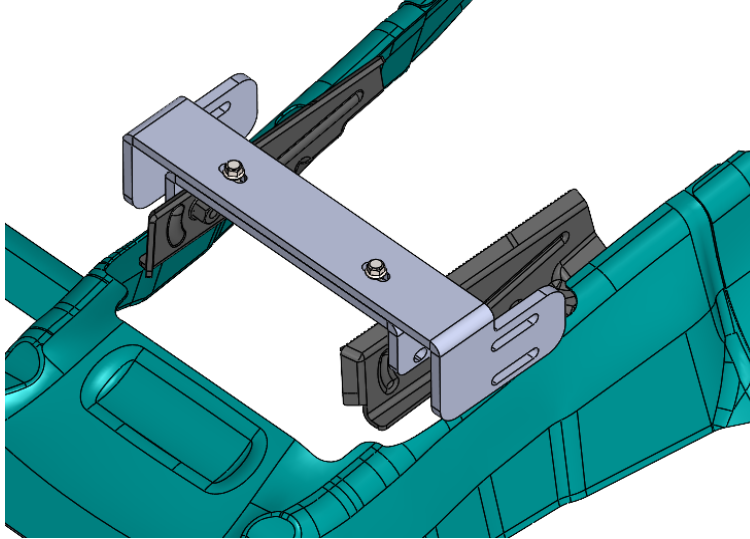
With OEM center plate removed, attach PMT 2021 Dodge Durango Console rear leg to the OEM mounting location and tighten it with 10mm socket and 2x OEM bolts that was removed from Step 1.



# INSTALLATION INSTRUCTIONS

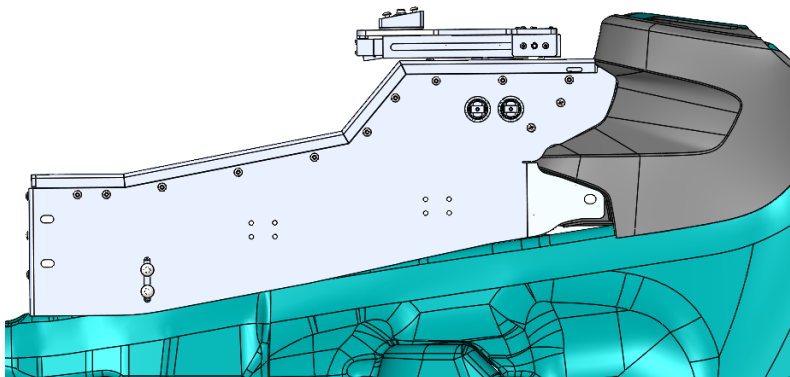
## Step 3

Put the Dodge Durango Console rear leg bracket on top, and hand tighten with the 2x ¼-20 carriage bolts & nuts.



## Step 4

Place the PMT Durango Console shell between the seats and aligned with front two holes with the dash. Hand tighten it with the OEM bolts that were removed from Step 1.



## Step 5

After the front bolts are attached, hand tighten the 2x ¼-20 carriage bolts & nuts on each side.

# INSTALLATION INSTRUCTIONS

## Docking the Laptop

### Step 6

Adjust the console position, and make sure it's aligned with the dash profile.

Use the 10mm socket and #1/4 -20 wrench to tighten 2 bolts in the front, and 6 carriage bolts in the back.



### Step 7 : Installing Face Plates

Install the optionally supplied: dual cupholder plate, blank filler plates, radio faces plates, and laptop mounting plates.

The plates are secured to the console using the supplied 10-24 nuts that are slid into the console rails, and then fastened with the supplied 10-24 x 5/8" screws.



### Tip

PMT consoles use a "floating nut" style rail for attaching face plates to the console. In the consoles that have angled rails, foam inserts are used to help position the nuts for easier alignment with the face plates mounting screws. Use an Allen (hex) key to position the foam and nut where desired, then mount the face plate.



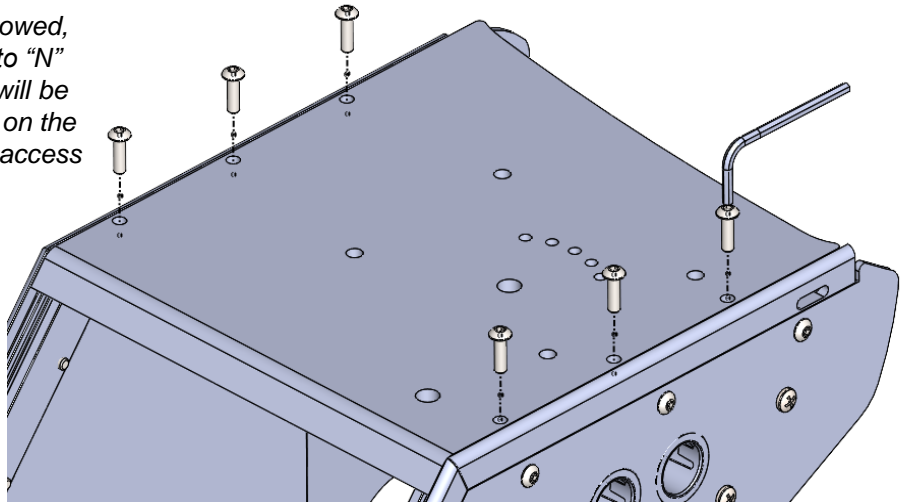


# INSTALLATION INSTRUCTIONS

## Step 8

Take the #10-24 Allen key from the hardware bag and place it in the glove box or other storage place in the car.

*(When the vehicle needs to be towed, and the shifter can not be put into "N" position, The #10-24 Allen Key will be needed to remove the 6 screws on the Console top plate, and gain the access to the shift lock release).*



## Shift Lock Release



# INSTALLATION INSTRUCTIONS

## Step 9 : Final Adjustments

Go over everything to make sure that everything is fully tightened and secure.

Adjust positioning and go over how the built-in adjustments are used to maximize comfort, safety and functionality.

