



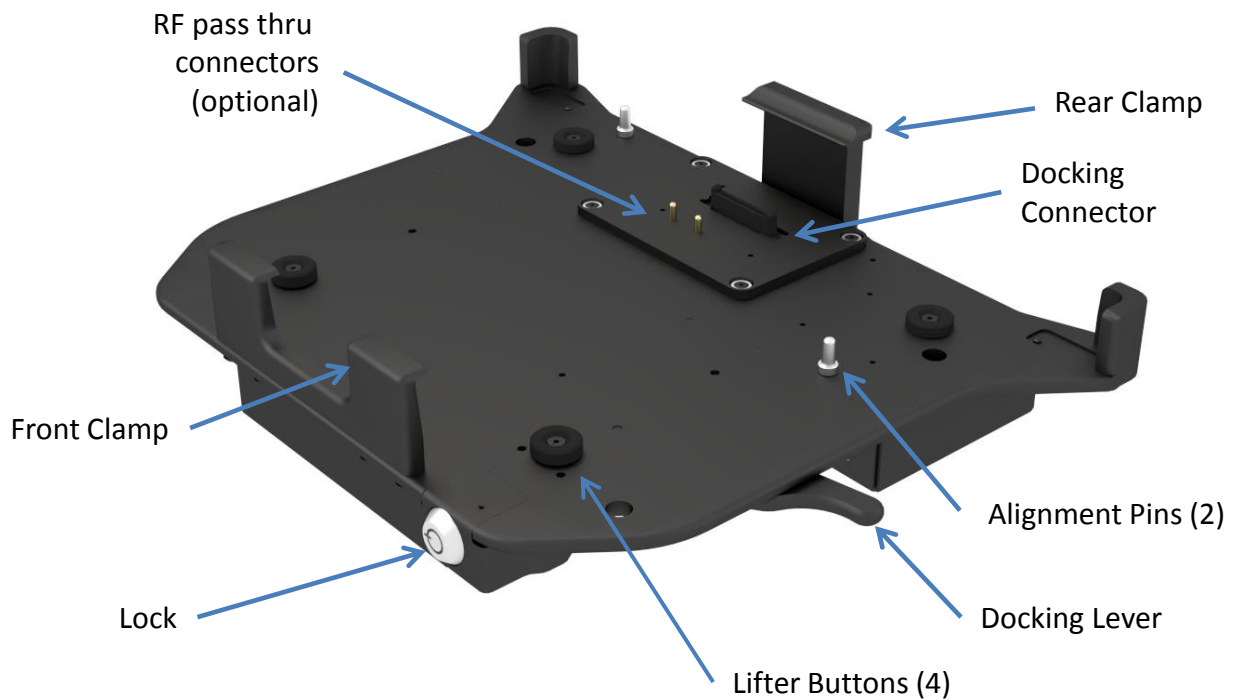
# TrimLine Vehicle Dock For GammaTech SA14 DURABOOK Computer

## User/Installation Guide

Description	Part Number
SA14 NPT (no RF pass thru) Vehicle Dock	AS7.G014.200
SA14 DPT (dual RF pass thru) Vehicle Dock	AS7.G014.202

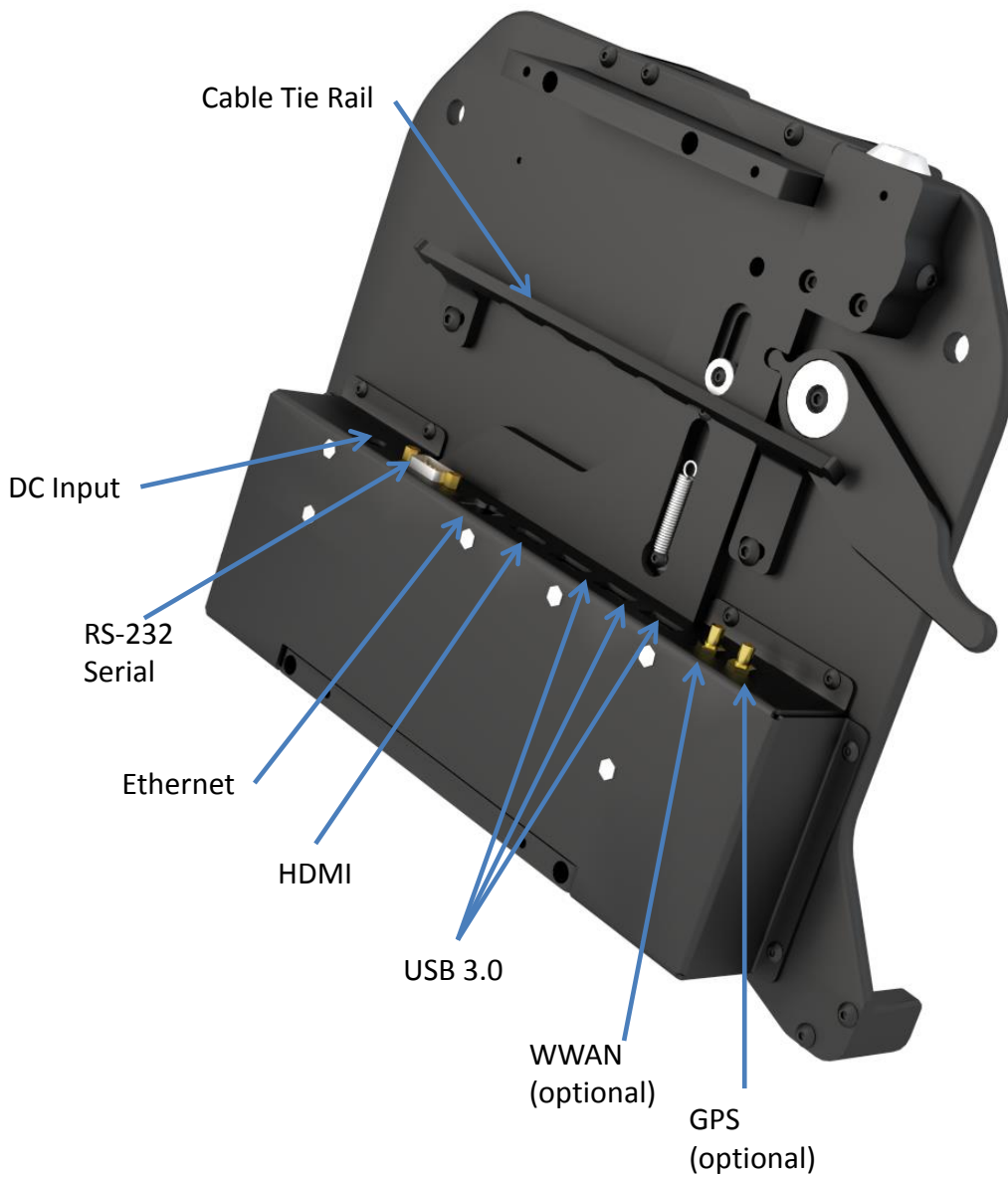
# Description of Parts and Layout

## Top View



# Description of Parts Continued

## Bottom View

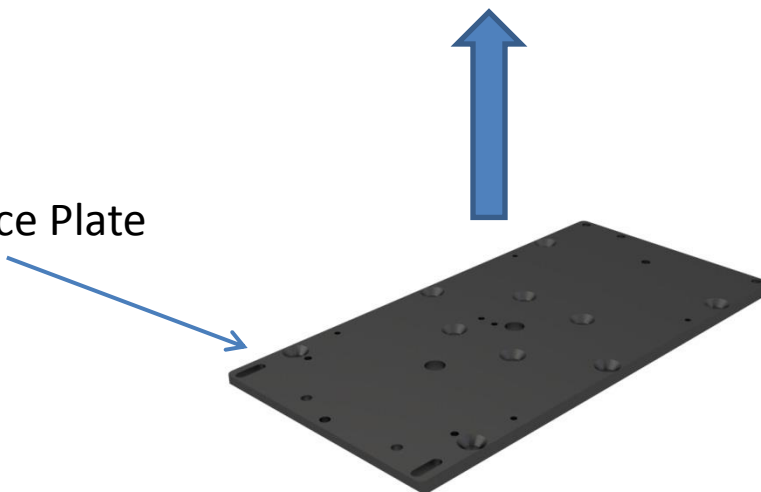


## Description of Parts Continued

SA14 Vehicle Dock

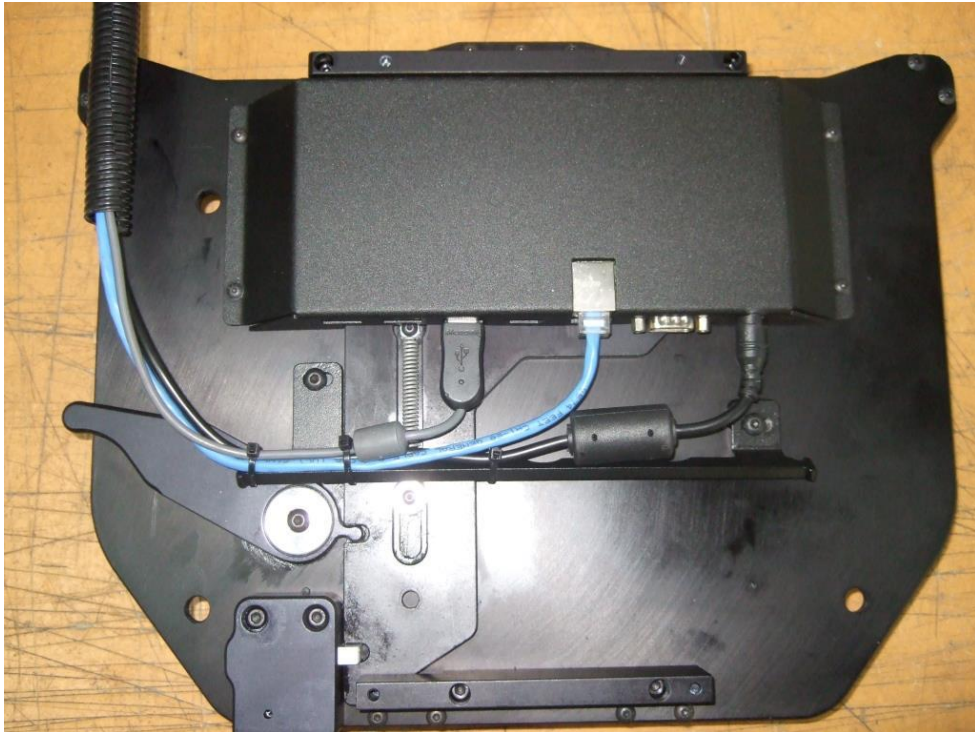


Interface Plate



## Connecting Cables

Connect any peripheral and power cables to the appropriate mating port on the docking station, and use plastic cable tie straps (Zip Ties) to secure the cables to the cable tie rail as shown below. PMT recommends routing the cables so that they end up coming out the right side (passenger side) of the docking station.



Sample image only

Once all cables are secured, PMT recommends using plastic split loom to protect the cables as they exit the dock. It is also best to secure the cable bundle to a point no further than 18" from the dock for additional strain relief. Enough length needs to be left loose so that the dock can be moved and adjusted as needed.

For more recommended wiring tips please visit:

[http://www.precisionmounts.com/uploads/2/2/9/1/2291996/general\\_wiring\\_and\\_troubleshooting\\_guide.pdf](http://www.precisionmounts.com/uploads/2/2/9/1/2291996/general_wiring_and_troubleshooting_guide.pdf)

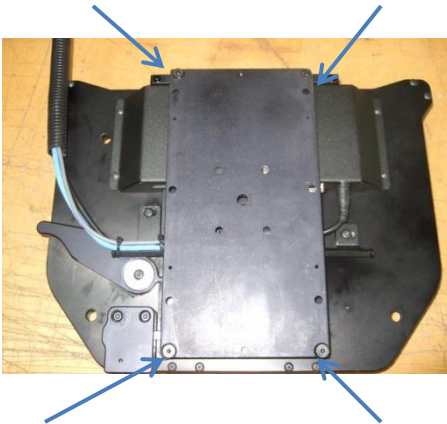
## Attaching the Dock to a Mount



First attach the interface plate to your mount using the appropriate hardware



Next attach the dock (with cables already connected) to the interface plate using qty-4, 10-24 x 1/2" screws



4 screw locations for attaching the interface plate to the dock. (mount removed for clarity)



Tighten the 10-24 screws using an 1/8" allen key (hex wrench)

## Docking the Computer



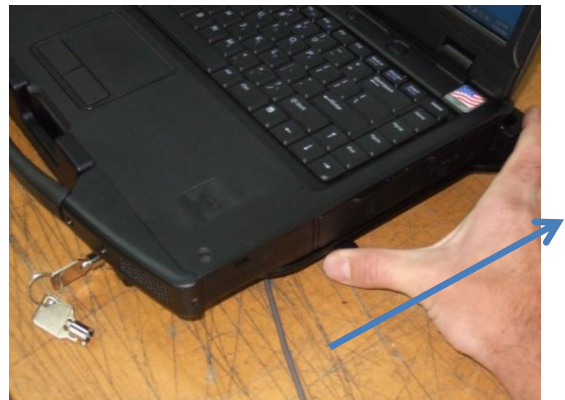
Step 1: Insert key and rotate 90 degrees counter clockwise to prepare dock for computer. Note the docking lever springs forward and rear clamp slides back.



Step 2: Slide computer into dock front first so that front clamp grips computer in between handle.



Step 3: Let the rear end of the computer down into the dock. A gentle push down is all that is necessary to ensure computer is fully seated.



Step 4: Slide the docking lever back to engage the locking mechanism and continue holding.



## Docking the Computer Continued



Step 5: While holding the lever back, rotate the key 90 degrees clockwise then remove the key.

**Note:**

The computer is not fully secure until the handle is in it's locked (back) position, and the key has been removed



The computer is now fully secure and functional



Photo shows SA14 Vehicle Dock installed on PMT SightLine console in a 2013 Ford F150



# Removing the Computer From the Docking Station



Step 1: Insert key and rotate 90 degrees counter clockwise. The docking lever will spring forward releasing the rear clamp



Step 2: Remove the computer by lifting up from the rear of the laptop, and sliding it out of the dock



Step 3: You may now rotate the key 90 degrees clockwise and remove which will make re-insertion of the computer back into the dock quick and easy without needing to reinsert the key



For more info visit: [www.precisionmounts.com](http://www.precisionmounts.com)

Or call us at 1-888-869-7652  
[info@precisionmounts.com](mailto:info@precisionmounts.com)