



DOCKING STATION FOR PANASONIC TOUGHBOOK® G2

This vehicle docking station is Panasonic Toughbook® Certified, engineered for maximum user convenience and confidence, dedicated to operate with the Panasonic Toughbook® G2 tablet computer using latest materials and technologies. Manufactured from high grade aluminum ensures the smallest possible footprint inside a vehicle to offer maximum safety, comfort and use of cabin space for the vehicle operator.

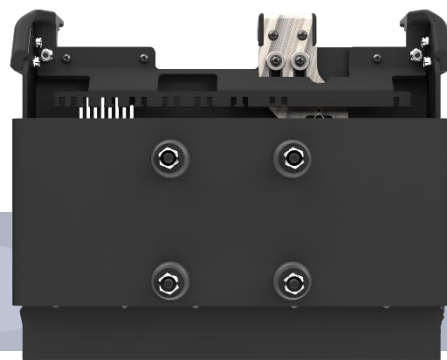
FEATURES

- CNC machined aluminum construction for ultimate rugged performance
- Genuine Panasonic electronics for maximum reliability
- Floating connector pin design for maximum connectivity responsiveness
- Gigabit Ethernet VLAN
- 2 x USB 3.2 5Gbps Type A (rear)
- 2 x USB 2.0 Type A (rear)
- 2 x USB 2.0 Type A (front)
- Dual HDMI video outputs
- Optional Dual RF Pass-Through with SMA connectors
- Ergonomic design for safety and usability
- Universal VESA 75 mounting pattern
- Low profile footprint for increased usable cabin space
- Key lockable for added theft deterrence
- Top facing ports with integrated cable management
- One handed operation
- Slots for device cooling fan ventilation
- Compatible with Panasonic Toughbook G2 tablets
- 3 year limited warranty



TESTING/CERTIFICATIONS

- Panasonic Toughbook® Certified
- MIL-STD-810-G: CHG1
- Vibration & Shock
- Cycle – Latch/Unlatch 30,000 cycles
- Shock-Crash Test - Simulated 30mph sled crash test
- Environmental
- FCC, CE, UKCA, RoHS





DOCKING STATION FOR PANASONIC TOUGHBOOK® G2 PART NUMBERS AND TECHNICAL SPECIFICATIONS

ITEM NUMBERS

AS7.P222.100	- TOUGHBOOK® G2 TABLET NPT DOCK
AS7.P222.100-PS	- TOUGHBOOK® G2 TABLET NPT DOCK WITH POWER ADAPTER
AS7.P222.102	- TOUGHBOOK® G2 TABLET DPT DOCK
AS7.P222.102-PS	- TOUGHBOOK® G2 TABLET DPT DOCK WITH POWER ADAPTER
AS7.P222.104	- TOUGHBOOK® G2 TABLET CRADLE
AS7.P222.104-PS	- TOUGHBOOK® G2 TABLET CRADLE WITH POWER ADAPTER

PORT REPLICATION*

1 x RJ45 Ethernet (Gigabit) VLAN	2 x HDMI
2 x USB 3.2 5Gbps Type A (rear)	1 x RS-232 (Serial)
2 x USB 2.0 Type A (rear)	15 VDC Input
2 x USB 2.0 Type A (front)	2 x RF Pass-Through (SMA)*

*Optional

WEIGHT	HEIGHT	WIDTH	DEPTH
4.60 – 4.95 lbs	8.99"	11.20"	3.79"

