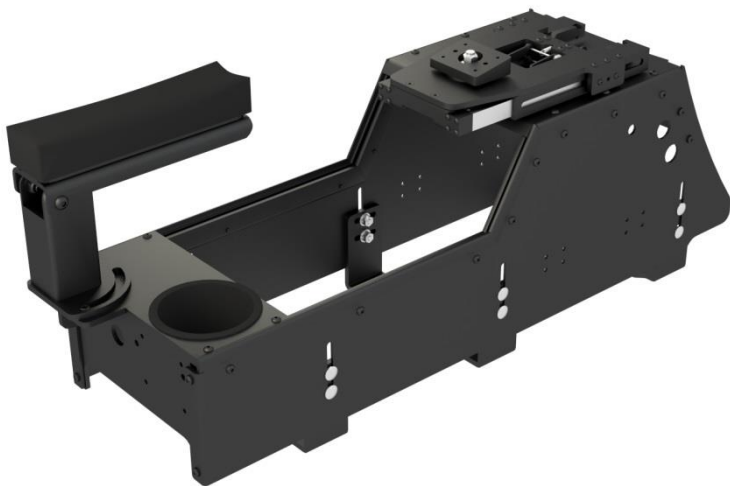
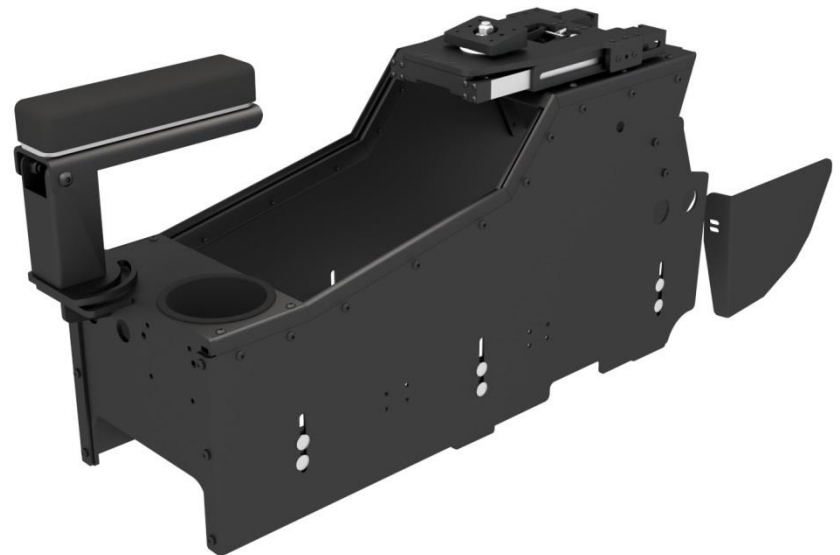




Install Guide for PMT Consoles and Mounting Systems for the 2013 and up Ford Interceptor Sedan and Utility Vehicles



Standard Interceptor sedan console with break-away armrest and Mousetrap Motion Mount



Standard Interceptor utility console with break-away armrest and Mousetrap Motion Mount

Step 1: Remove steel hump plate

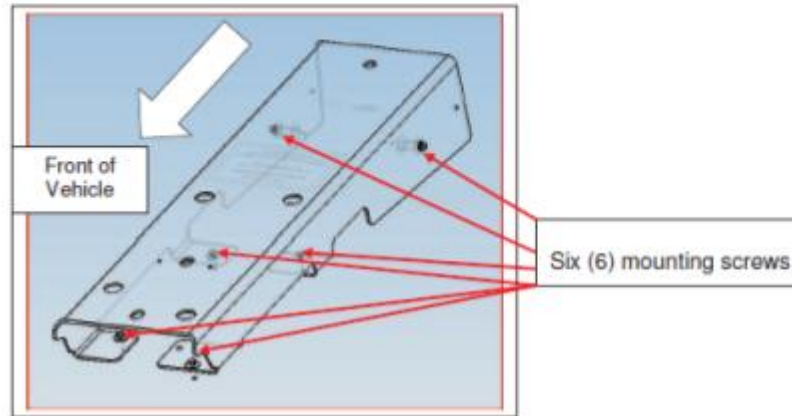
Sedan



Utility



Removal process for center console mounting plate:



1. Remove six screws that secure the console mounting plate to the body.
2. Slide the console mounting plate forward in vehicle approximately 13mm (0.5 in.) until contact is made with the instrument panel.
3. Lift the rearward end of the console mounting plate at approximately 45° angle upwards while holding the front end of the console mounting plate down.
4. Remove the console mounting plate by lifting it rearward along the 45° degree angle.

Note:
Utility Only - An extra step is needed to remove the steel hump plate, see next page for detail.

Step 1 continued...

Extra Step for Utility Only:

- To remove the steel hump bracket in the utility it is first necessary to remove the side plastic trim that runs along the side of the centre column. Remove by gently pulling it away and releasing the clips.
- Once the side trim is removed, the centre section that houses the 12v outlets can also be removed. This is done by removing the 2 screws and gently pulling out releasing the clips.

Screws



Utility

- Once the side trim and centre section is removed, install supplied side trim back into position as shown using the same hardware that held the original trim.



Utility driver side trim panel

Step 2: Install new (supplied) Console Mounting Brackets Sedan and Utility

-Now that the steel plate is removed it will be helpful to trim back some of the plastic floor covering material.



Utility pictured before trimming

-Remove just enough so that you can release the clips holding the wires tight to the metal panel



Sedan pictured after trimming

Step 2 continued...

-Install the front two brackets under the wires, and secure them using the bolts that were used with the original steel hump plate. Do not tighten completely until later in the installation.

Front brackets

Sedan

-Remove the rear steel bracket, and replace with the supplied console mounting bracket as shown to the left. (actual bracket may be different then shown)

Sedan pictured

Step 2 continued...



Utility

-The factory rear steel bracket assembly can not be removed, so install the supplied rear mounting bracket with the notch cut-out facing rear as shown to the left. It may be necessary to insert washers or a spacer over the studs in order to avoid clearance issues with factory welds on the vehicles steel bracket.

Supplied rear console mounting bracket

Factory rear steel bracket assembly

Utility pictured

Step 3: Install the Console - Sedan and Utility

- With the bolts holding the brackets still loose, slide the console down over the brackets and position so that the slots in the side of the console line up with the slots in the mounting brackets.
- Centre the console as desired and then tighten the bolts holding the mounting brackets to the vehicle.



Sedan pictured

Step 4: Install side bolts Sedan and Utility

-Install the side carriage bolts (supplied) that secure the console to the mounting brackets by sliding them down and holding with one hand, then use a plain washer, split lock washer, then the nut. Do not tighten until all bolts (12 in total) are installed and the position of the console is as desired.



Side carriage bolt

Utility pictured

Step 4 Continued...

Sedan:

The top of the console should line up nicely with the dash as shown below

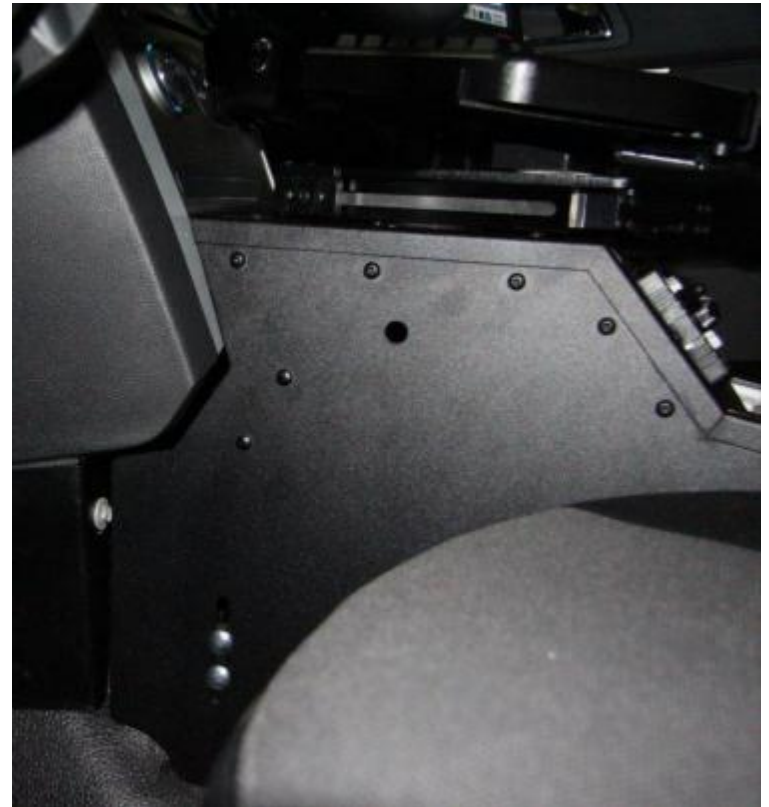


-Once the console is aligned as desired, tighten all remaining bolts.

PMT

Utility:

The console should line up as shown below

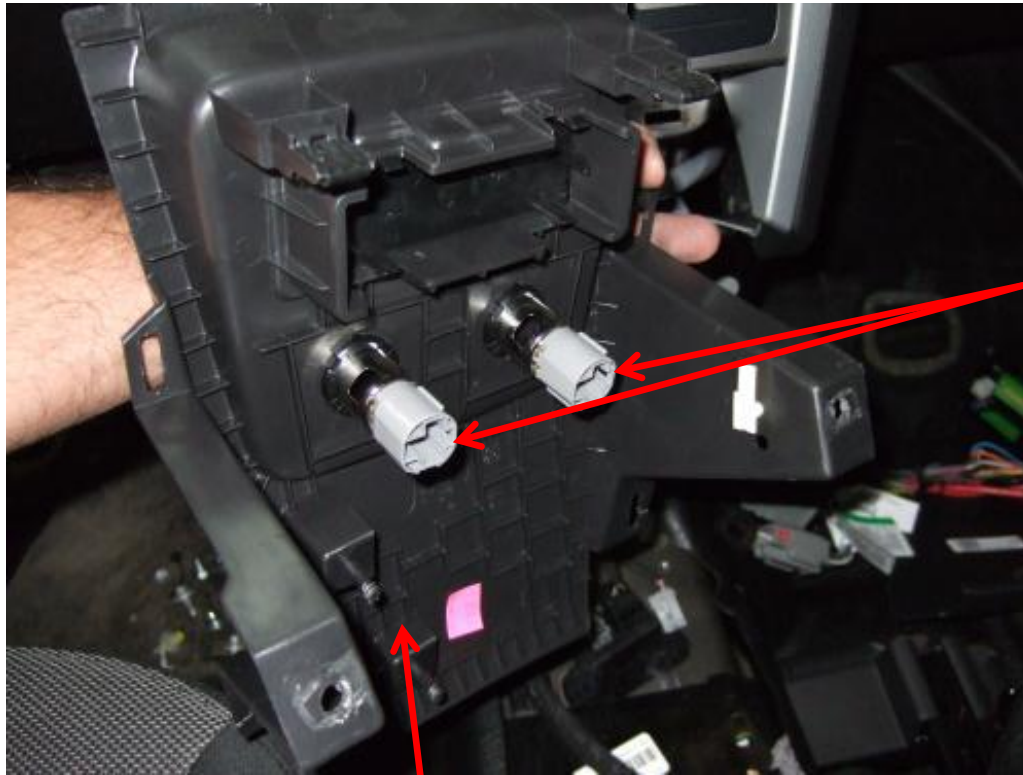


Step 5: Install accessories

Utility:

Remove the original OEM 12v sockets from the centre trim panel removed in an earlier step, for re-install into the new console. Once installed in the new console, re-connect the wiring that originally lead to them.

Utility



OEM 12v sockets

Note: (Utility only) Keyless entry receiver module is mounted to this trim panel from the factory. Remove it from the panel (leaving all wiring hooked up) and secure it somewhere in the new console or under the dash.

Step 5 Continued...

Sedan and Utility:

- Install the optionally supplied: armrest/cupholder plate, blank filler plates, radio faces plates, and laptop mounting plates.
- The plates are secured to the console using the supplied 10-24 nuts that are slid into the console rails, and then fastened with the supplied 10-24 x 5/8" screws.

OEM 12v sockets
re-installed



Utility Pictured



Tip:

PMT consoles use a "floating nut" style rail for attaching face plates to the console. In the consoles that have angled rails, foam inserts are used to help position the nuts for easier alignment with the face plates mounting screws. Use an allen key to position the foam and nut where desired, then mount the face plate.

Step 6: Final adjustments

- Go over everything to make sure that everything is fully tightened and secure.
- Adjust positioning, and go over how the built in adjustments are used to maximize comfort, safety and functionality.



Utility



Sedan