



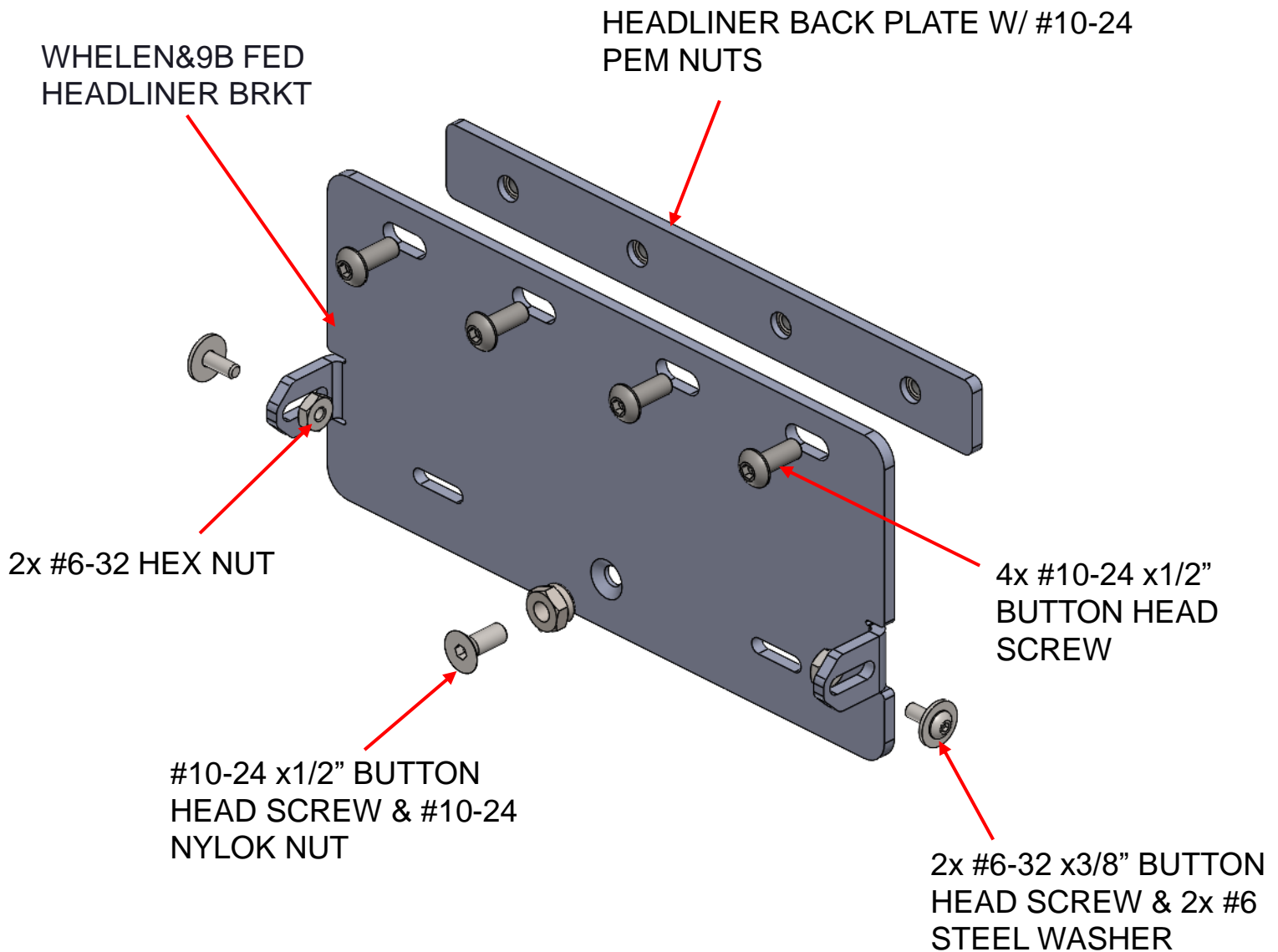
# 2020+ SILVERADO HEADLINER MOUNT

## USER GUIDE

Description	Part Number
2020+ SILVERADO HEADLINER MOUNT FOR WHELEN CENCOM AND FED SIGNAL PATHFINDER (9 BUTTONS)	AS4.C244.012



# PARTS & HARDWARE DESCRIPTION (AS4.C244.012)



# INSTALLATION INSTRUCTIONS

AS4.C244.012

## 2020+ SILVERADO HEADLINER MOUNT FOR WHELEN CENCOM AND FED SIGNAL PATHFINDER (9 BUTTONS)

### Tools and hardware required:

- Socket set suitable for #10-24 Hex Allen wrench
- Socket set suitable for #6-32 Hex Allen wrench
- $\Phi 3/16$ " drill

**Step 1 (FOR WHELEN CENCOM):** Insert #6-32 hex nut on each side of the slot from the unit. Place the cencom unit on top of the bracket and using the supplied 2x #6-32 button head screws and washer to tighten it.



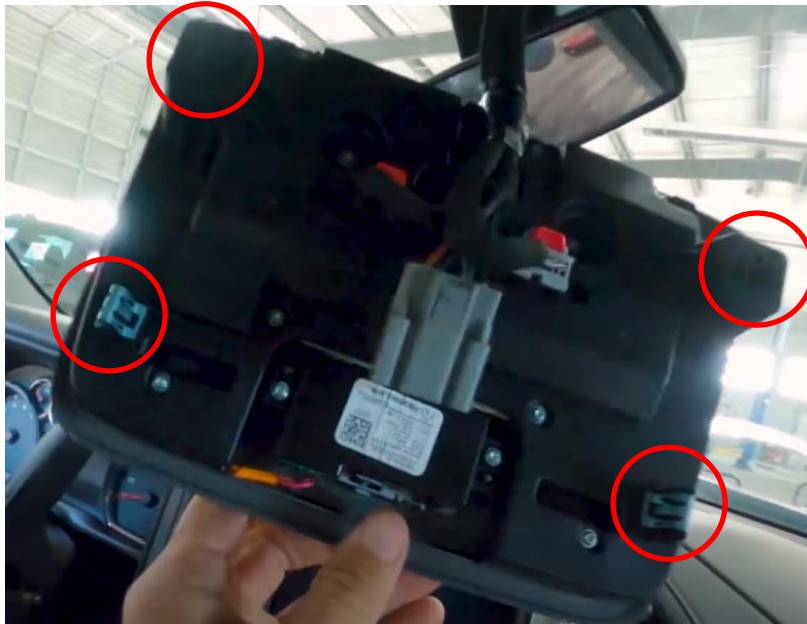
### Step 1 (FOR FED SIGNAL PATHFINDER- 9 BUTTONS):

Place the cencom unit on top of the bracket and using the supplied 2x #6-32 button head screws to tighten it from the back.



## Step 2:

**a):** Remove the OEM headliner temporarily



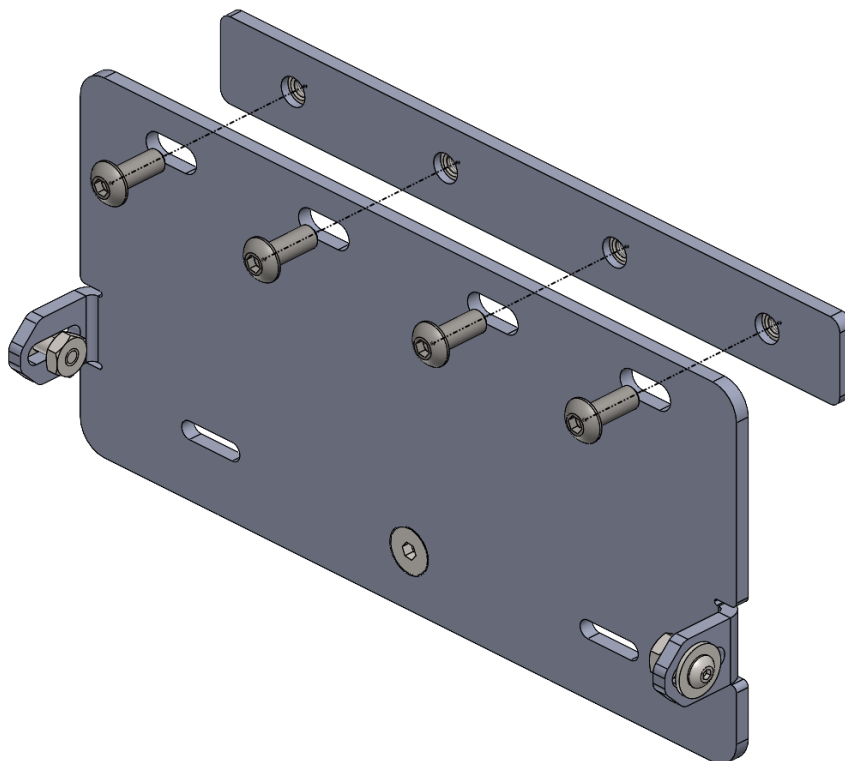
**b):** Gently pry and take off the OEM headliner and place the headliner back plate in the desirable place.



**Step 3:** Use the  $\Phi 3/16$ " drill and drill four holes based on the bracket's location



**Step 4:** Attach the cencom and bracket assembly by using the supplied 4x #10-24 x1/2" button head screws.





**Step 5:** Put the roof and the OEM headliner back. Make sure everything is tight and secure.



Whelen Cencom option



Fed Signal Pathfinder (9 button) option

**NOTE:** This assembly has been tested on the 2020+ Silverado vehicle, but it could potentially fit on the other vehicles as well.

Please ensure to have minimum 7"x4.5" blank space and the installer can remove the OEM headliner safely to access the backside of the roof. After installation, ensure the device will not block the rear-view mirror.

