



2015+ F150/F250 HEADLINER MOUNT FOR FEDERAL SIGNAL

USER GUIDE

Description	Part Number
2015+ F150/F250 HEADLINER MOUNT FOR FEDERAL SIGNAL	AS4.C244.011

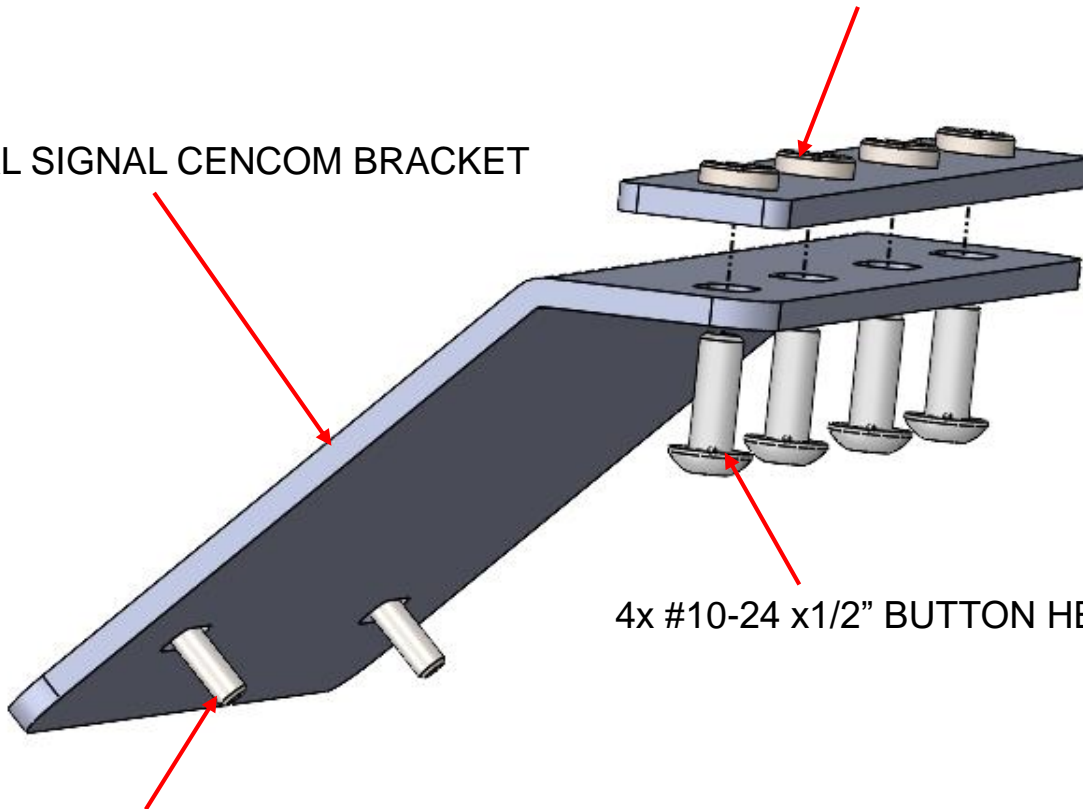
www.precisionmounts.com

call us at 1-888-869-7652 | info@precisionmounts.com

PARTS & HARDWARE DESCRIPTION

2015+ F150 HEADLINER BACK PLATE
W/ #10-24 PEM NUTS

FEDERAL SIGNAL CENCOM BRACKET



4x #10-24 x1/2" BUTTON HEAD SCREW

2x #6-32 x1/2" BUTTON HEAD SCREW

INSTALLATION INSTRUCTIONS

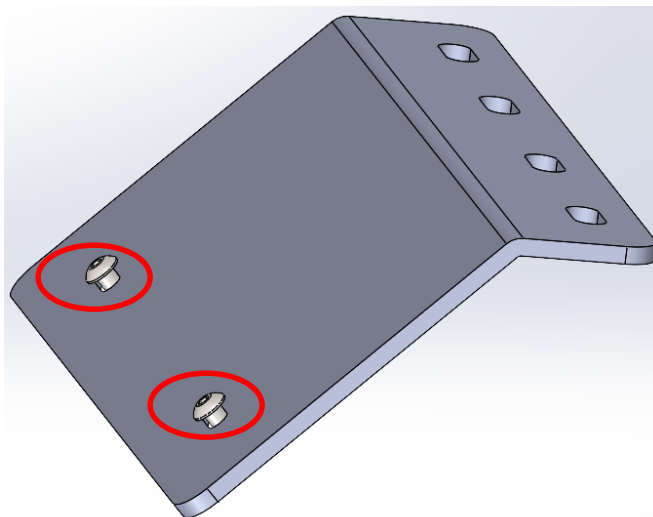
AS4.C244.011

2015+ F150/F250 HEADLINER MOUNT FOR FEDERAL SIGNAL

Tools and hardware required:

- Socket set suitable for #10-24 Hex Allen wrench
- Socket set suitable for #6-32 Hex Allen wrench
- $\Phi 3/16$ " drill

Step 1: Place the cencom unit on top of the bracket, and using the supplied 2x #6-32 button head screws tighten it.



Step 2:

Option1: Gently pry and take off the roof partly, place the headliner back plate in the desirable place.



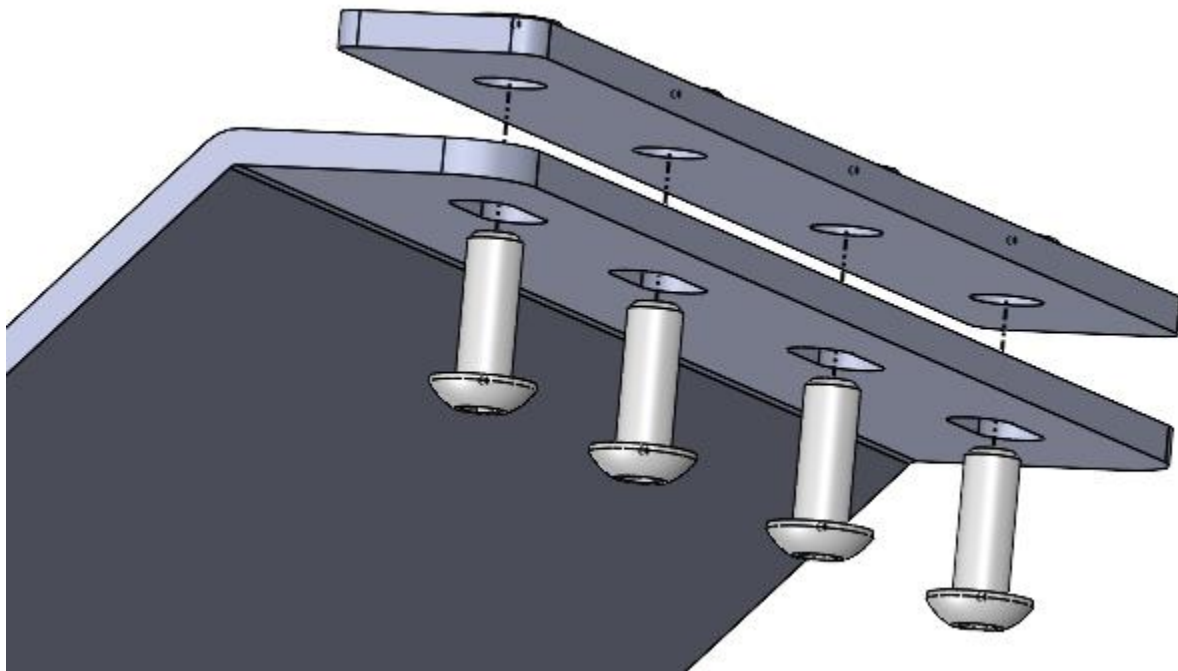
Option2: Gently pry and take off the OEM headliner, and place the headliner back plate in the desirable place.



Step 3: Use the $\Phi 3/16$ " drill and drill four holes based on the bracket's location



Step 4: Attach the cencom and bracket assembly by using the supplied 4x #10-24 x1/2" button head screws.



Step 5: Put the roof or the OEM headliner back. Make sure everything is tight and secure.

