



# VEHICLE DOCK FOR DELL LATITUDE RUGGED LAPTOP COMPUTERS USER GUIDE

Bundles with power adapters included as a kit are available and are indicated with –PS suffix added to the part number.

This dock is designed to be compatible with the following models:

Dell Latitude Dell Pro Rugged 14 Laptop, Latitude Rugged 5430 Laptop

Dell Latitude Dell Pro Rugged 13 Laptop, Latitude Rugged 7330 Laptop

Dell Latitude Rugged 5404 / 5414 / 5420 / 5424 / 5430 (with use of AS7.D900.007, purchased separately)

Dell Latitude Rugged Extreme 7204 / 7214 / 7404 / 7414 / 7424 (with use of AS7.D900.007, purchased separately)

Refer to our “Retrofit Front Clamp Kit” user guides available on our website for compatibility and setup with various Latitude Rugged devices.

Description	Part Number
DOCKING STATION FOR DELL RUGGED LAPTOP FRONT PORT LITE NPT	AS7.D902.100
DOCKING STATION FOR DELL RUGGED LAPTOP FRONT PORT LITE TPT	AS7.D902.102
CRADLE FOR DELL RUGGED LAPTOP NPT	AS7.D902.104
CRADLE FOR DELL RUGGED LAPTOP TPT	AS7.D902.105
DOCKING STATION FOR DELL RUGGED LAPTOP FRONT PORT FULL NPT	AS7.D902.110
DOCKING STATION FOR DELL RUGGED LAPTOP FRONT PORT FULL TPT	AS7.D902.112
DOCKING STATION FOR DELL RUGGED LAPTOP REAR PORT LITE NPT	AS7.D903.100
DOCKING STATION FOR DELL RUGGED LAPTOP REAR PORT LITE TPT	AS7.D903.102
DOCKING STATION FOR DELL RUGGED LAPTOP REAR PORT FULL NPT	AS7.D903.110
DOCKING STATION FOR DELL RUGGED LAPTOP REAR PORT FULL TPT	AS7.D903.112

# GENERAL INSTRUCTIONS

## Safety:

- Safety is dependent on the proper installation and servicing of this product. It is important to read and follow all instructions before installing this product.
- Proper installation requires a good understanding of automotive electrical systems and is recommended to be performed by qualified technicians only.
- There are no adjustments or user serviceable parts within this product. Opening the case will void the product warranty
- Do not install equipment or route wires in the deployment path of any air bag, or where it may interfere with critical safety or operating controls of any vehicle.

## Wiring:

- PMT does not recommend relying on a cigarette socket adaptor for powering vehicle docks. We recommend hard wiring the power adapter using a good clean ground direct from the vehicle battery neg(-) post, and pos(+) supply from a fused 12Vdc location also directly from the vehicle battery. All peripherals connecting to the docking station requiring external power should get power and ground from the same location as the dock.
- Visit [www.precisionmounts.com/support/installation-user-guides.html](http://www.precisionmounts.com/support/installation-user-guides.html) for a copy of our general wiring and troubleshooting guide.

## Proper Use and Care:

- Proper care and use of this product is critical to maximize safety and to prevent damage to the docking station and laptop.
- Do not store, place, or drag any object on top of the docking station.
- Visually inspect the docking station and laptop for any defect before using the dock or docking the laptop. Do not use if damaged.
- Any modifications made to the docking station could result in adverse performance and damage to the laptop and/or docking station and will void the warranty.
- Do not attempt to dock a computer or dock with wet contacts

## SERVICING [ENTRETIEN]:

- If this product does not work as intended, please contact PMT for troubleshooting or to schedule a service. *[Si le dock ne fonctionne pas comme prévu, contactez PMT pour le dépannage ou pour planifier un service.]*
- Service should be only done by authorized service center personnel. Unauthorized servicing of the unit will void its warranty. *[L'entretien du dock ne doit être effectué que par le personnel du centre de service autorisé. Un entretien non autorisé du dock annulera sa garantie.]*

### Product Mounting Disclaimer

Precision Mounting Technologies Ltd (PMT) are not liable under any theory of contract or tort law for any loss, damage, personal injury, special, incidental or consequential damages for personal injury or other damage of any nature arising directly or indirectly as a result of the improper installation or use of its products in vehicle or any other application. In order to safely install and use PMT products full consideration of vehicle occupants, vehicle systems (i.e., the location of fuel lines, brake lines, electrical, drive train or other systems), air-bags and other safety equipment is required. PMT specifically disclaims any responsibility for the improper use or installation of its products not consistent with original vehicle manufactures' specifications and recommendations, PMT product instruction sheets, or workmanship standards as endorsed through PMT policies and EULA.



# GENERAL INSTRUCTIONS

## Power:

- The power input should be *20 Vdc / 6 A (120W)*. PMT recommends using a 120W Lind Auto Adapter (PMT part#: PS046) for this dock.
- PMT recommends using a 100W Lind Auto Adapter(PMT part#: PS040) for the cradle version
- Power must only be supplied to either the docking station, or directly to the laptop (cradles only), never both.
- Power supply must comply with local jurisdictions.

## Environmental:

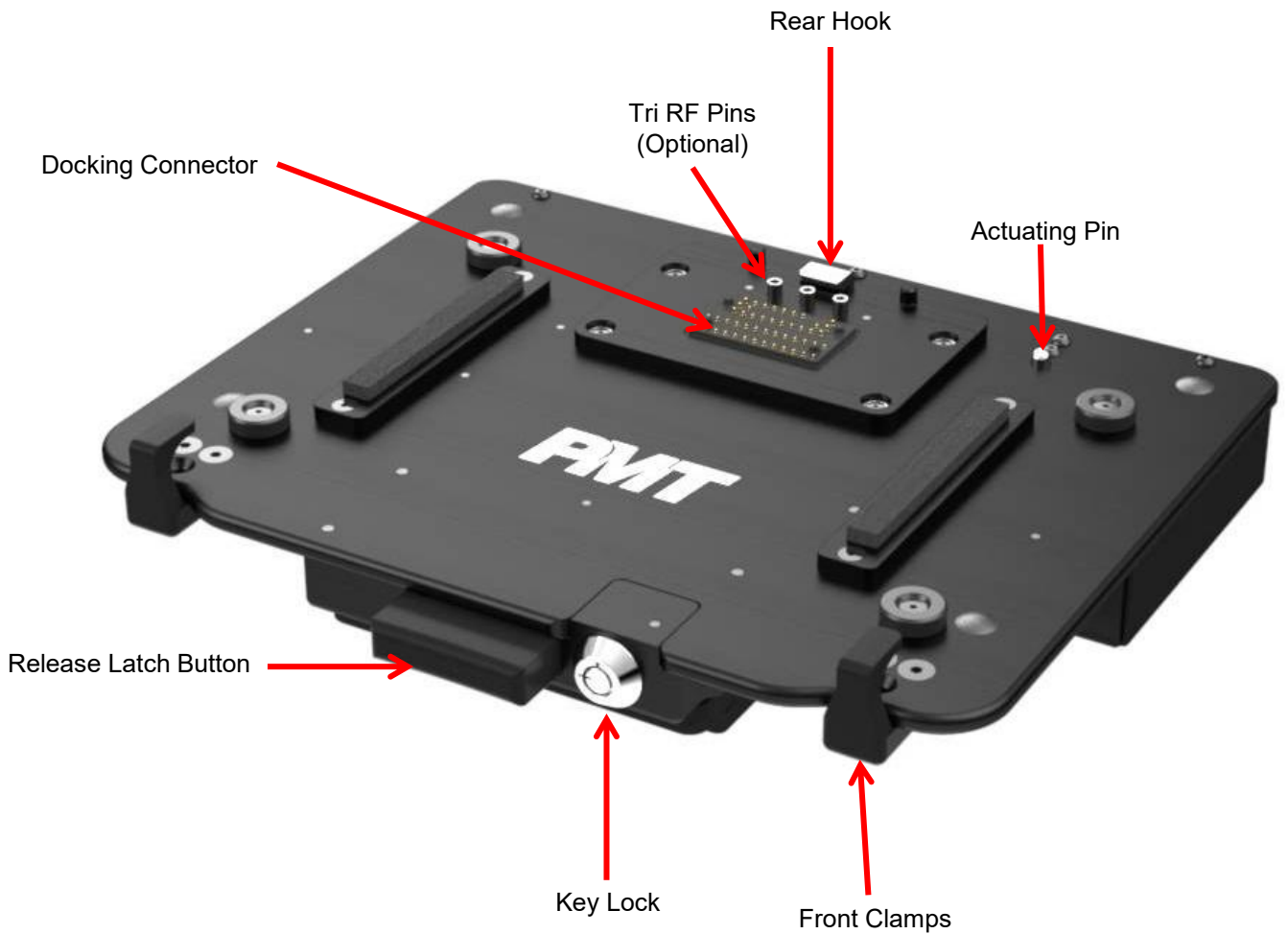
- Storage: -46°C to 85°C (-50.8°F to 185°F)
- Operating: -30°C to 63°C (-22°F to 145.4°F)

## \*\*Driver\*\*:

- Visit **WWW.PRECISIONMOUNTS.COM** to download the required docking station drivers for your device.  
WWW.PRECISIONMOUNTS.COM > SUPPORT > DOCKING DRIVERS  
<https://www.precisionmounts.com/docking-drivers>

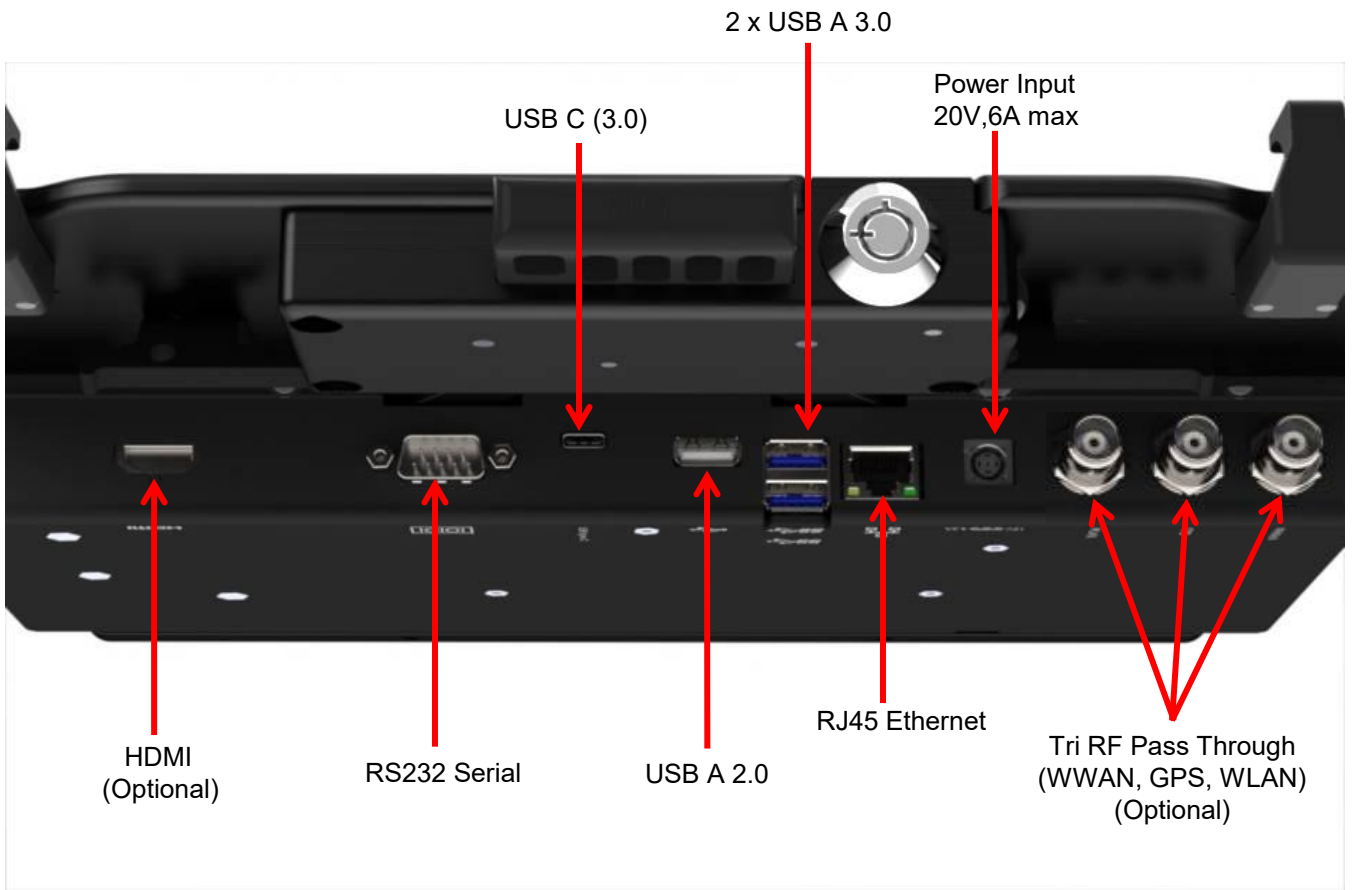
# DESCRIPTION OF PARTS

Forward facing port version shown



# DESCRIPTION OF PARTS

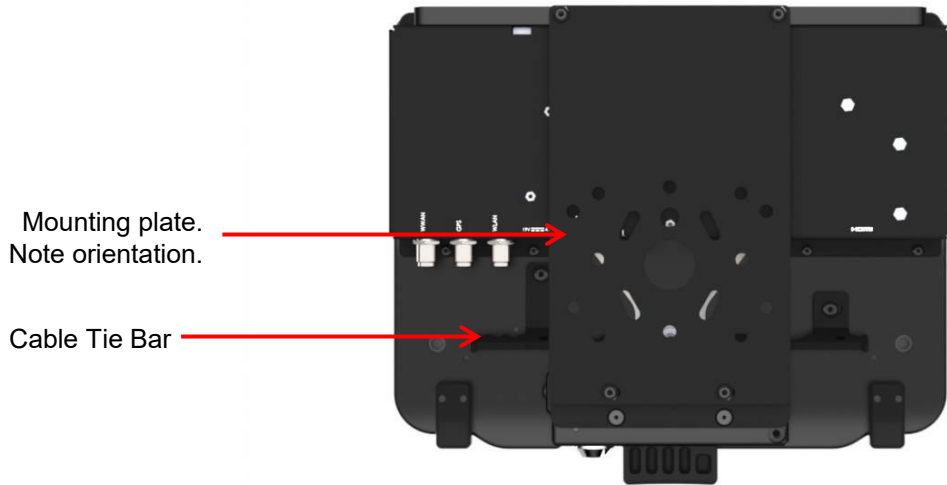
Forward facing port version shown (mounting plate removed for clarity)



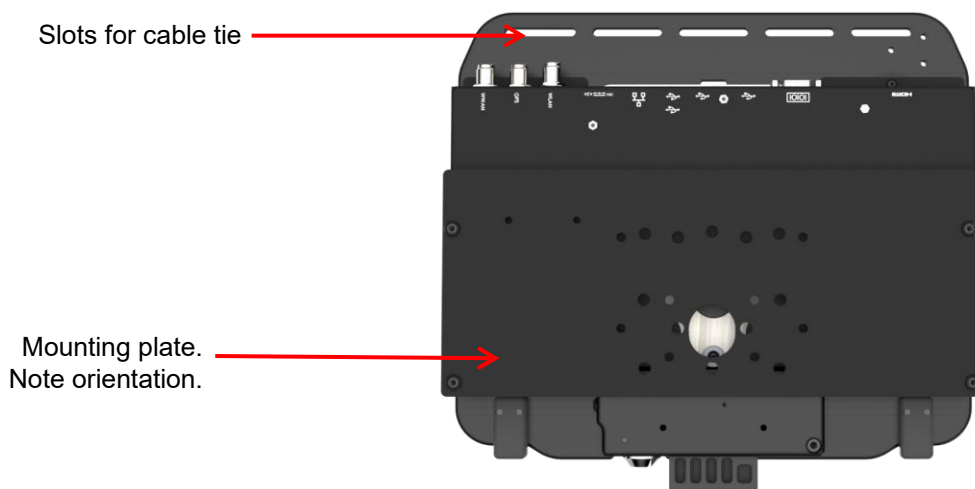
\*RF Antenna connections are optional based on docking station model. Connectors are TNC

# DESCRIPTION OF PARTS

## Forward Facing Port Version Bottom View



## Rear Facing Port Version Bottom View



# DOCKING STATION SETUP

Multiple models of Dell Rugged Laptops are compatible with this docking station. However, some models may require a “retrofit front clamp kit” available from PMT (purchase separately). The image to the right is how docking stations are shipped by default and is the correct setting for Dell pro rugged 13/14 and Latitude Rugged 5430/7330 laptops.

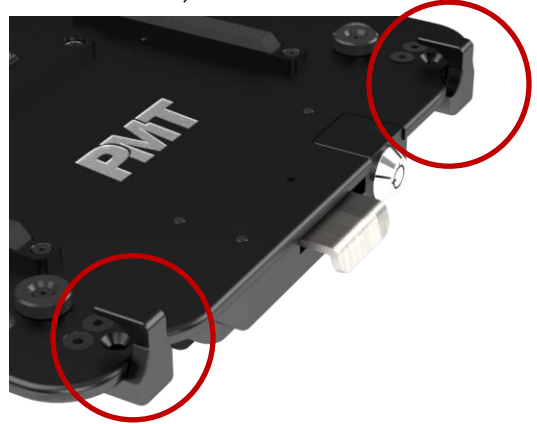
For other configurations and retrofit front kit, please refer to our website <https://www.precisionmounts.com/products/dell-laptop-retrofit-front-clamp-kit-version-3>

Clamp configuration for 7214:



Front clamp Part#:AS7.D900.007

Clamp configuration for Pro Rugged 13, 14 and 5430, 7330



Clamp configuration for 5404, 5414, 5420, 5424, 7204:



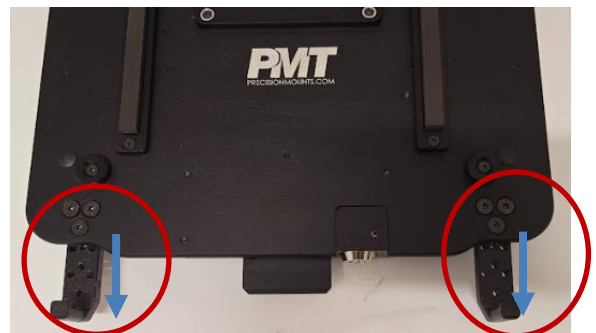
Front clamp Part#:AS7.D900.007

Clamp configuration for 7424:



Front clamp Part#: AS7.D900.007

Clamp configuration for 7404 7414:



Front clamp Part#: AS7.D900.007

# INSTALLATION INSTRUCTIONS

## Step 1

Using a 1/8" Allen/Hex key (wrench), remove the four #10-24 screws attaching the mounting plate to the dock and remove the plate.

## Step 2

Install mounting plate onto mounting infrastructure using the four provided screws and hardware that best suit the installation. Be sure to orientate the plate in the correct position (holes toward user, and counter sunk holes up).

## Step 3

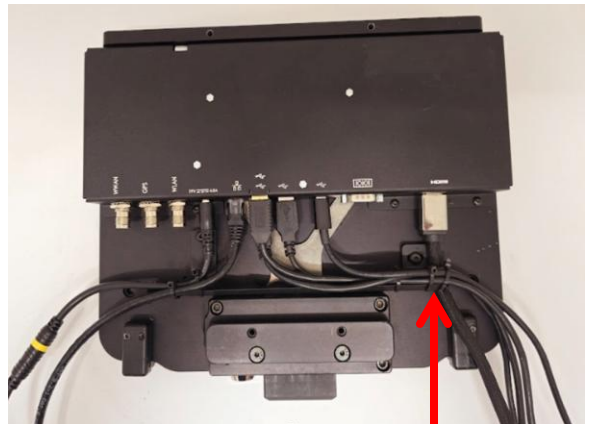
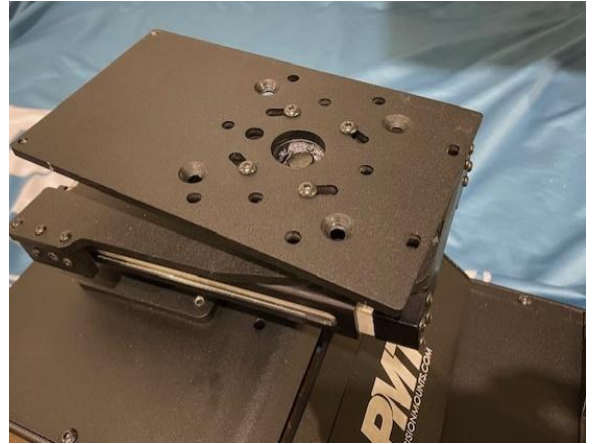
Connect all required wiring to the dock while utilizing plastic tie straps and the cable tie rail to secure cables/connections. Each cable connecting to the docking station should be secured via a tie strap before exiting the docking station. Ensure to provide a sufficient "service loop" of cabling to allow for adjustment and positioning of the docking station.

## Step 4

Attach dock to mounting plate using the four #10-24 screws removed in step 1.

**Note** – PMT recommends using Blue Loctite 243 (not provided) or equivalent on all hardware when using docking station in a mobile environment.

**Tip:** Visit our website to search for and review our "General wiring and troubleshooting guide" for further information.



Cables secured to cable tie rail via tie straps



# DOCKING THE LAPTOP

## Step 1

Ensure lock is in the unlocked position, then press the release lever to prep the docking station for the laptop.

## Step 2

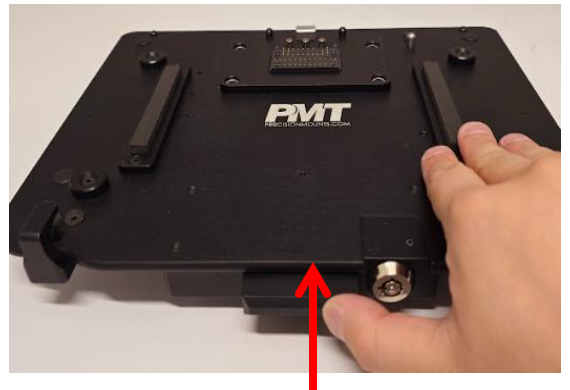
Place laptop front edge first against the front clamps ensuring proper alignment. Ensure any loose cables or tethers do not come in between laptop and dock.

## Step 3

Lower the rear of the laptop down onto the docking station and press until it clicks, and the dock latches closed. If excess force is felt, return to step 1 and do not force. Verify complete docking by lifting the laptop up. If it does not come out of the dock, successful docking is complete.

## Step 4

For additional security and theft deterrence, insert key and rotate lock to the locked position as shown.



# UNDOCKING THE LAPTOP

## Step 1

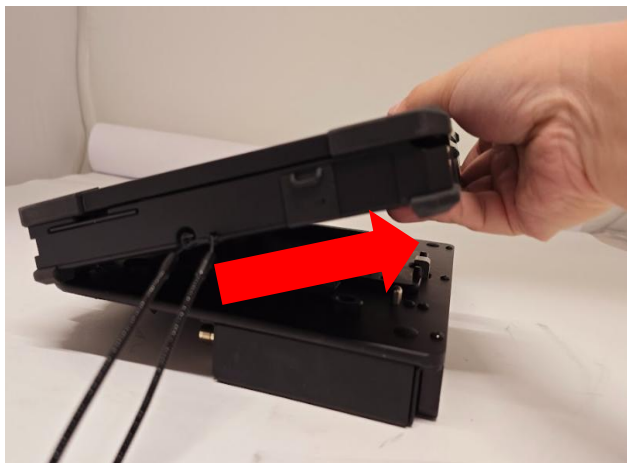
If previously locked, insert key and rotate lock to the unlocked position.

## Step 2

Press the release lever and pull the rear of the laptop up out of the dock. Be careful not to drag the laptop across the docking connector and or RF pins.

## Step 3

Lift the laptop out of the docking station taking care not to drag the laptop across the docking connector.



Regulatory model: AS7.D903.112

Certifications and test standards:

EN ISO / IEC 17050-1:2004

ICES-003(A) / CISPR 32 / EN 50498

MIL-STD-810H: CHG1

RoHS 3(2011/65/EU)

UKCA

Made in Canada

