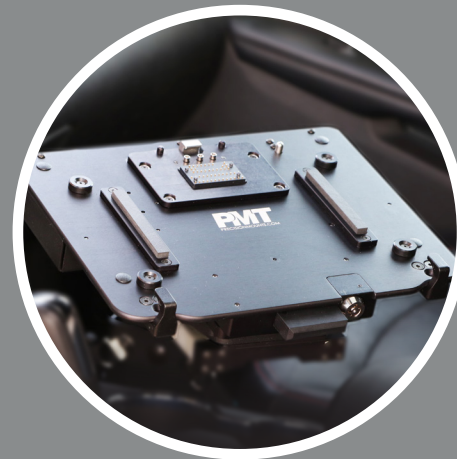




# DOCKING STATIONS

FOR YOUR LAPTOP AND TABLET



**PMT** precision  
mounting  
technologies™



### DOCKING STATION FOR DELL RUGGED LAPTOP FRONT PORT

**ITEM NUMBERS:**

- AS7.D902.100 Lite Port NO RF
- AS7.D902.102 Lite Port TRI RF
- AS7.D902.110 Full Port NO RF
- AS7.D902.112 Full Port TRI RF
- AS7.D902.104 Cradle NO RF

- Compatible with Dell laptop models Pro Rugged 13 and Pro Rugged 14, Latitude 5430 and 7330
- Compatible with legacy Dell rugged laptops with optional fit kit (purchased separately)
- Port replication includes: USB-C 5Gbps, USB-A 5Gbps (x2), USB-A 480Mbps, RJ-45 Ethernet, Serial RS232, HDMI on Full Port version
- Front facing ports keeps cables within footprint of the dock
- Integrated cable management tie rail
- Optional RF for WiFi, GPS, and cellular
- Extreme compact size preserves cabin space and increases user safety
- CNC machined aluminum construction
- Auto-latching feature for operator safety
- Floating connector design ensures reliable operation
- Convenient, front-located push-to-release latch
- Key lockable for added theft deterrence
- Available in no-electronics cradle versions
- 3-Year Limited Warranty

**CERTIFICATES & TESTING:**

- Vibration & Shock per MIL-STD-810-H
- 75G Shock
- Cycle – Latch/Unlatch 30,000 cycles
- Shock-Crash Test - Simulates 30mph crash test
- Environmental - Humidity / Thermal Shock / Low Temp Storage / High Temp Storage
- FCC, CE, UKCA, RoHS
- EMC Testing - EN 50498 / CISPR 32 – Class B / ICES-0003



### DOCKING STATION FOR DELL RUGGED LAPTOP REAR PORT

**ITEM NUMBERS:**

- AS7.D903.100 Rear Port Lite NO RF
- AS7.D903.102 Rear Port Lite TRI RF
- AS7.D903.110 Rear Port Full NO RF
- AS7.D903.112 Rear Port Full TRI RF

- Compatible with Dell laptop models Pro Rugged 13 and Pro Rugged 14, Latitude 5430 and 7330
- Compatible with legacy Dell rugged laptops with optional fit kit (purchased separately)
- Port replication includes: USB-C 5Gbps, USB-A 5Gbps (x2), USB-A 480Mbps, RJ-45 Ethernet, Serial RS232, HDMI on Full Port version
- Rear facing ports provide easier access to ports once mounted into a vehicle
- Integrated cable management tie rail
- Optional RF for WiFi, GPS, and cellular
- Extreme compact size preserves cabin space and increases user safety
- CNC machined aluminum construction
- Auto-latching feature for operator safety
- Floating connector design ensures reliable operation
- Convenient, front-located push-to-release latch
- Key lockable for added theft deterrence
- Available in no-electronics cradle versions
- 3-Year Limited Warranty

**CERTIFICATES & TESTING:**

- Vibration & Shock per MIL-STD-810-H
- 75G Shock
- Cycle – Latch/Unlatch 30,000 cycles
- Shock-Crash Test - Simulates 30mph crash test
- Environmental - Humidity / Thermal Shock / Low Temp Storage / High Temp Storage
- FCC, CE, UKCA, RoHS
- EMC Testing - EN 50498 / CISPR 32 – Class B / ICES-0003



### DOCKING STATION FOR DELL RUGGED 10" TABLET

**ITEM NUMBERS:**

- AS7.D922.100 LITE (without HDMI)
- AS7.D922.110 FULL (with HDMI)
- AS7.D922.104 No Electronics Cradle

- Compatible with Dell tablet models Pro Rugged 10 and Latitude 7030
- Top-facing I/O ports: USB 3.1 Type-A (2), Ethernet, USB Type-C, Serial RS232, HDMI ('FULL' version only)
- Integrated cable management tie rail
- Extreme compact size preserves cabin space and ensures user safety
- CNC machined aluminum construction
- Auto-latch mechanism ensures tablet is latched when docked
- Simple, one-handed operation
- Key lockable for added theft deterrence
- Allows easy access to the tablet's built-in stylus
- Available in no-electronics cradle version
- Tablet cooling fan ventilation slots
- 3-Year Limited Warranty

**CERTIFICATES & TESTING:**

- MIL-STD-810-H
- Vibration & Shock per MIL-STD-810-H
- Cycle – Latch/Unlatch 30,000 cycles
- Shock-Crash Test - Simulates 30mph crash test
- Environmental - Humidity / Thermal Shock / Low Temp Storage / High Temp Storage
- FCC, CE, UKCA, RoHS
- EMC Testing - EN 50498 / CISPR 32 – Class B / ICES-0003



### DOCKING STATION FOR DELL RUGGED 12" TABLET

**ITEM NUMBERS:**

- AS7.D921.100 NO RF LITE
- AS7.D921.102 QUAD RF LITE
- AS7.D921.110 NO RF FULL
- AS7.D921.112 QUAD RF FULL
- AS7.D921.104 Cradle NO RF

- Compatible with Dell tablet models Pro Rugged 12 and Latitude 7230
- Top-facing I/O ports: USB 3.1 Type-A (2), Ethernet, USB Type-C, Serial RS232, HDMI ('FULL' version only)
- Integrated cable management tie rail
- Optional Quad RF Pass-Through (SMA)
- Extreme compact size preserves cabin space and ensures user safety
- CNC machined aluminum construction
- Auto-latch mechanism ensures tablet is latched when docked
- Simple, one-handed operation
- Key lockable for added theft deterrence
- Allows easy access to the tablet's built-in stylus
- Available in no-electronics cradle version
- Tablet cooling fan ventilation slots
- 3-Year Limited Warranty

**CERTIFICATES & TESTING:**

- MIL-STD-810-H
- Vibration & Shock per MIL-STD-810-H
- Cycle – Latch/Unlatch 30,000 cycles
- Shock-Crash Test - Simulates 30mph crash test
- Environmental - Humidity / Thermal Shock / Low Temp Storage / High Temp Storage
- FCC, CE, UKCA, RoHS
- EMC Testing - EN 50498 / CISPR 32 – Class B / ICES-0003
- Australian Regulatory Compliance Mark



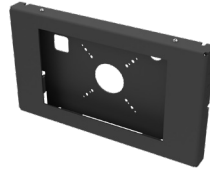


## FLOOR STAND KIOSK FOR DELL LATITUDE 7230 RUGGED EXTREME TABLET

### ITEM NUMBERS:

AS9.C185.027-1 Floor Stand Kiosk For Dell Latitude 7230 Tablet

- Aircraft-grade aluminum construction provides a rugged, lightweight solution
- Steel base for sturdy positioning
- Cable routing channels through pedestal upright offer increased security and tamper resistance
- Countersunk holes for optional fixing of the base to the floor
- Black epoxy powder coat finish provides years of easy maintenance
- Tamper resistant tablet enclosure to increase security and deter theft
- Conceals cables and all tablet front and side buttons, tablet rear power button access only for further increased security
- Compact low-profile design
- Tablet enclosure can be mounted in landscape or portrait orientation
- Compatible with tablets that have screen protection film installed
- Limited Lifetime Warranty

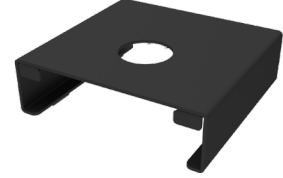


## ENCLOSURE FOR DELL LATITUDE 7230 RUGGED EXTREME TABLET

### ITEM NUMBERS:

AS7.W001.400 Enclosure For Dell Latitude 7230 Tablet

- Aluminum construction with black epoxy powder coat finish provides years of maintenance free use
- Tamper resistant to increase security and deter theft
- Conceals charging cable and all front and side buttons
- Power button access on rear
- Fixed mount solution for added protection of the tablet
- Compact low profile design
- VESA 75 and VESA 100 mounting interface to allow multiple mounting options
- Can be mounted in landscape or portrait orientation
- Compatible with tablets that have screen protection film installed
- \*When wall mounting, access to rear power button is only possible by use of additional equipment or spacer for appropriate clearance.
- Limited Lifetime Warranty



## ENCLOSURE FOR DELL OPTIPLEX MICRO OPTICAL DISK DRIVE

### ITEM NUMBERS:

AS9.C080.100 Enclosure For Dell Optiplex Micro ODD

- Compatible with Dell Optiplex Micro desktop computer and Dell DW316 Optical Disk Drive
- Combines desktop computer case and external disk drive into a single unit
- Compact low profile design to minimize occupied desk space
- Cable management zip ties included
- Foam mounting feet for reduced friction
- Limited Lifetime Warranty



## UNIVERSAL LAPTOP CRADLES

### ITEM NUMBERS:

- AS7.U101.100 Standard Cradle
- AS7.U101.101 Thick Widescreen Cradle
- AS7.U101.102 Thin Widescreen Cradle

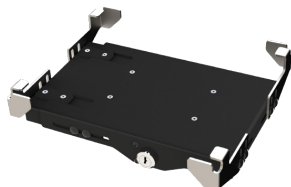
### • Device dimensions:

- **AS7.U101.100**  
Width: 10.2" to 14.2"  
Depth: 8.2" to 10.2"  
Height: 1.0" to 1.90"
- **AS7.U101.101**  
Width 11.2" to 15.0"  
Depth 8.2" to 10.2"  
Height 1.05" to 1.90"
- **AS7.U101.102**  
Width: 11.2" to 15.0"  
Depth: 8.2" to 10.2"  
Height: 0.60" to 1.35"

- User adjustable
- Extreme compact size preserves cabin space and ensures user safety
- CNC machined aluminum construction
- Key locking mechanism for increased security
- Limited Lifetime Warranty

### CERTIFICATES & TESTING:

- ROHS, FCC, CE
- MIL-STD 810G Shock/Vibration
- SAE J1455 Crash Test
- Cycle Tested – Locking and Docking Mechanism
- Environmental Tested – High/Low Temperature, Humidity



## UNIVERSAL TABLET CRADLES

### ITEM NUMBERS:

- AS7.U102.100 Standard Cradle
- AS7.U102.101 Standard Cradle with Alternative Clamps
- AS7.U102.300 XL Cradle

### • Device dimensions:

- **AS7.U102.100**  
Width 9.375" to 11.5"  
Depth 6.25" to 8.5"  
Height 0.25" to 1.0"
- **AS7.U102.101**  
Width: 9.375" to 11.5"  
Depth: 6.25" to 8.5"  
Height: 0.25" to 1.0"
- **AS7.U102.300**  
Width 12" to 14.125"  
Depth 7.3" to 10.8"  
Height 0.359" to 1.2"

- User adjustable
- Extreme compact size preserves cabin space and ensures user safety
- CNC machined aluminum construction
- Key locking mechanism for increased security
- Limited Lifetime Warranty

### CERTIFICATES & TESTING:

- ROHS, FCC, CE
- MIL-STD 810G Shock/Vibration
- SAE J1455 Crash Test
- Cycle Tested – Locking and Docking Mechanism
- Environmental Tested – High/Low Temperature, Humidity



## POWER ADAPTERS

### ITEM NUMBERS:

- PS046 Dell 11-16v Input, 120w 7.4mm barrel connector Output
- PS040 Dell 11-16v Input, 100w USB-C connector Output
- PS024 Dell 20-60v Input, 90w 7.4mm barrel connector Output (Isolated)



## SIDE SCREEN SUPPORT

### ITEM NUMBERS:

- AS7.D900.001 Dell Front Port Side Screen Support
- AS7.D901.002 Dell Rear Port Side Screen Support

- Compatible with PMT Dell laptop docks
- Provides additional support for laptop screen
- Reduces strain and wear on laptop screen hinges aiding increased longevity
- Easy-release handle for adjustment and position locking
- Limited Lifetime Warranty



## LAPTOP DOCK RETROFIT KITS

### ITEM NUMBERS:

- AS7.D900.004 Dell Laptop Retrofit Front Clamp Kit V1
- AS7.D900.005 Dell Laptop Retrofit Front Clamp Kit V2
- AS7.D900.006 Dell Laptop Retrofit Front Pocket Kit from PMT
- AS7.D900.007 Dell Laptop Retrofit Front Clamp Kit V3

- Compatible with Dell laptop models
- Simple installation, less than two minutes
- High grade metal construction
- Durable black anodized finish to match existing equipment
- Limited Lifetime Warranty



# DOCKING STATIONS

**PMT**<sup>TM</sup>

515 58th Ave SE, Calgary, Alberta, T2H 0P7 Canada  
1.888.869.7652 | [sales@precisionmounts.com](mailto:sales@precisionmounts.com)