



DOCKING STATION FOR DELL RUGGED 12" TABLET

Engineered for rugged reliability in harsh environments and highly demanding conditions, to operate seamlessly with the Dell Rugged 12" Tablets. Offering optimal workflow along with a range of connector ports including No RF or Quad RF pass-through options for maximum suitability in all applications.

FEATURES

- CNC aluminum construction offers rugged durability
- Ergonomic design for safety and usability
- Universal VESA 75 mounting pattern
- Ultra slim, low-profile design for minimal intrusion of operator space to maximize comfort and safety
- Floating docking connector for reliable connectivity
- Key lockable for added theft deterrence
- Upward facing ports with integrated cable management
- One handed operation
- 3-year limited warranty

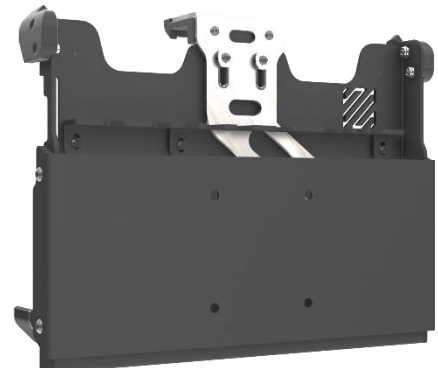


TECHNICAL SPECIFICATIONS

WEIGHT	HEIGHT	WIDTH	DEPTH
5.50 – 7.50 lbs	9.45"	12.37"	2.97"

TESTING / CERTIFICATIONS

- MIL-STD-810-H
- Vibration & Shock per MIL-STD-810-H
- Cycle – Latch/Unlatch 30,000 cycles
- Shock-Crash Test - Simulates 30mph crash test
- Environmental - Humidity / Thermal Shock / Low Temp Storage / High Temp Storage
- FCC, CE, UKCA, RoHS
- EMC Testing - EN 50498 / CISPR 32 – Class B / ICES-0003
- Australian Regulatory Compliance Mark





DOCKING STATION FOR DELL RUGGED 12" TABLETS

ITEM NUMBERS

- AS7.D921.100 - Docking Station for Dell Rugged 12" Tablet NPT Lite
- AS7.D921.102 - Docking Station for Dell Rugged 12" Tablet QPT Lite
- AS7.D921.110 - Docking Station for Dell Rugged 12" Tablet NPT Full
- AS7.D921.112 - Docking Station for Dell Rugged 12" Tablet QPT Full
- AS7.D921.104 - Cradle for Dell Rugged 12" Tablet NPT

* Versions with power adapter also available
denoted by '-ps' suffix on part number

ITEM NUMBER	PORT REPLICATION						
	USB3 Type-C 5Gbps Speed 1.5A Output	USB3 Type-A 5Gbps Speed 1.5A Output	Ethernet 10/100mbps	RS-232 Serial (5V/ 1A MAX Pin 9)	19.5VDC Power Input	4x RF Pass-Through (SMA)	HDMI
AS7.D921.100	1	2	1	1	1	No	No
AS7.D921.102	1	2	1	1	1	Yes	No
AS7.D921.110	1	2	1	1	1	No	Yes
AS7.D921.112	1	2	1	1	1	Yes	Yes
AS7.D921.104	0	0	0	0	0	No	No

