



2020+ GM TRUCK CONSOLE INSTALLATION GUIDE

Description	Part Number
2020+ GM TRUCK CONSOLE	AS4.C257.101/102/105
2020+ GM TRUCK CONSOLE WITH PRINTER	AS4.C257.111/112/115

Product Mounting Disclaimer

Precision Mounting Technologies Ltd (PMT) are not liable under any theory of contract or tort law for any loss, damage, personal injury, special, incidental or consequential damages for personal injury or other damage of any nature arising directly or indirectly as a result of the improper installation or use of its products in vehicle or any other application. In order to safely install and use PMT products full consideration of vehicle occupants, vehicle systems (i.e., the location of fuel lines, brake lines, electrical, drive train or other systems), air-bags and other safety equipment is required. PMT specifically disclaims any responsibility for the improper use or installation of its products not consistent with original vehicle manufactures' specifications and recommendations, PMT product instruction sheets, or workmanship standards as endorsed through PMT policies and EULA.

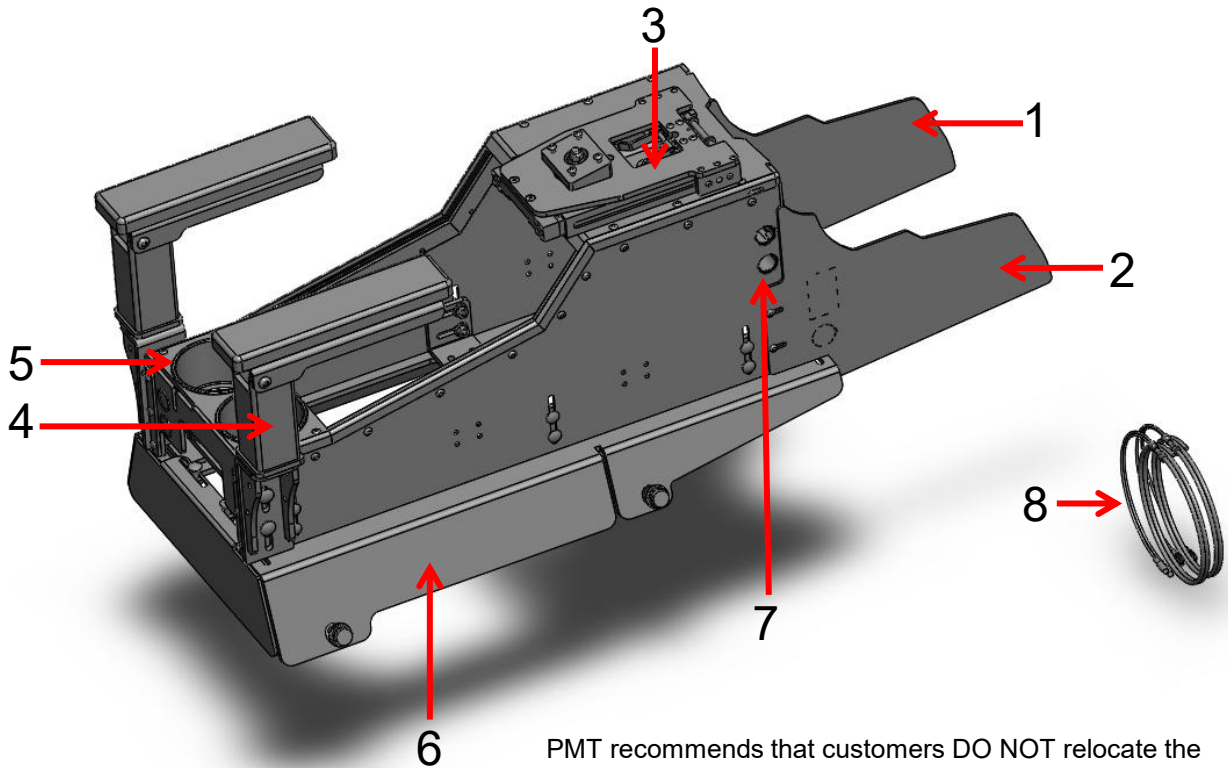


PRODUCT VISUALS



2020+ console shown above with optional blank faceplates, side break-away armrests, dual cup holder, mousetrap motion mount with tilt and docking station.

DESCRIPTION OF PARTS



PMT recommends that customers DO NOT relocate the OEM 12V socket from the dash into the PMT console housing for 2020 GM Truck consoles, as improper installation may cause an electrical short. (RE: GM Bulletin No. PIT5800)
Console includes 2x - 7/8" round hole for additional 12-volt socket if desired.

1. Left Trim panel- driver side wing
2. Right trim panel- passenger side wing
3. Flat mouse trap with wedge tilt to mount docking stations
4. Side mount arm rest
5. Cup holder
6. Mounting leg kit
7. 12 Volt charging outlet
8. Wire harness

INSTALLATION INSTRUCTIONS

Step 1

Remove OEM center seat, with 18mm socket. After removing the 4 bolts, remove the center seat, (keep bolts for re-use or use hardware provided) disconnect any electrical harness. See Fig 1



Fig 1

Step 2

Relocating OEM USB, *First remove the lower center trim by loosening the bolt on the driver side with a 7mm socket then pull on the trim straight back (trim is held on by clips) *Trim that is holding the USB housing can be pulled out in the same manner.

*Disconnect the harness. See Fig 2

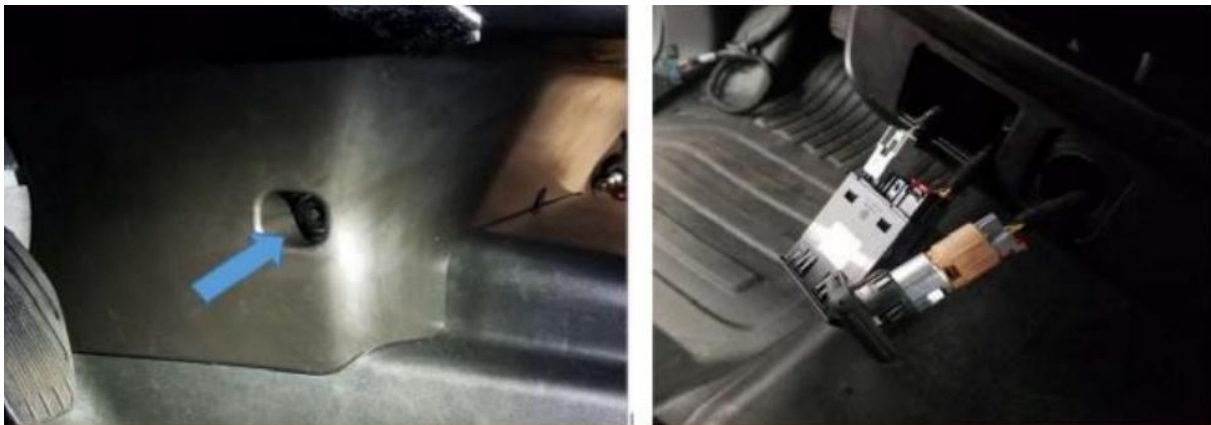


Fig 2

INSTALLATION INSTRUCTIONS

Step 3

Align the GM Truck leg kit brackets with the OEM holes as shown in Fig 3, use the M12 bolts provided or OEM bolts to fasten the leg kit, by using an 18mm socket

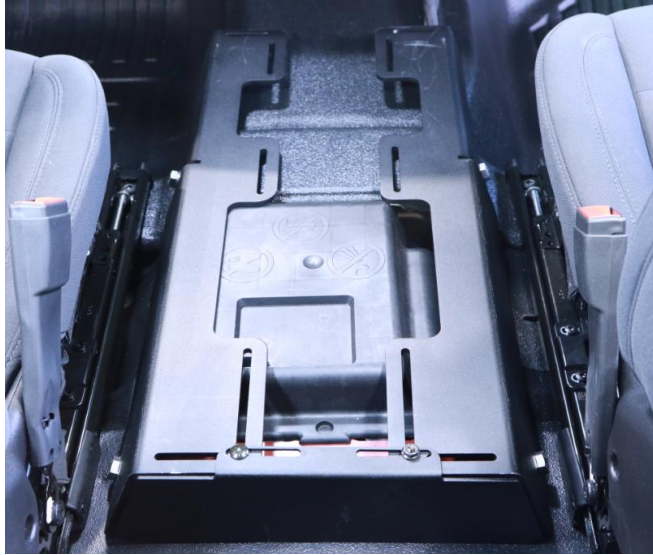


Fig 3

Step 4

Align the console box over the leg kit as shown and fasten the leg brackets with the console leg brackets as shown in Fig 4, 5- use a 7/16" socket wrench

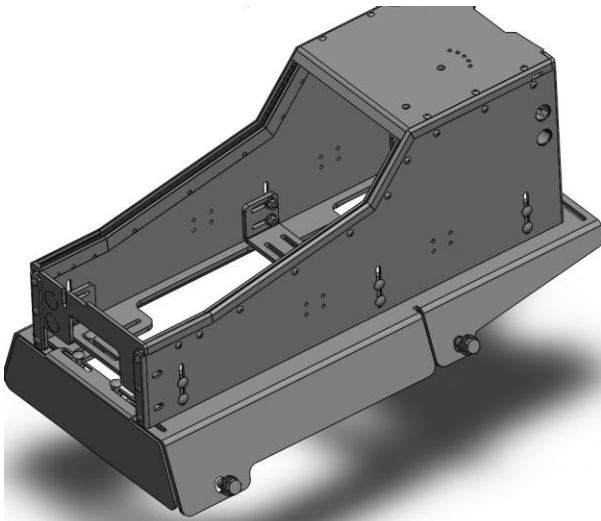


Fig 4

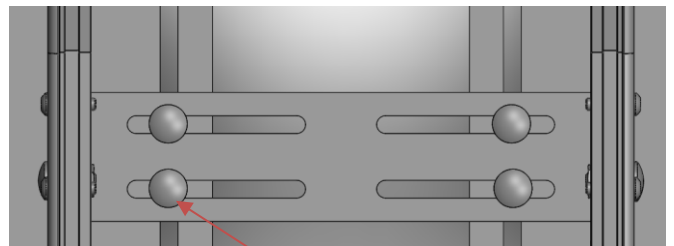


Fig 5

1/4-20 Carriage bolts and nuts
provided with Leg kit

INSTALLATION INSTRUCTIONS

Step 5

While trim is loose, to gain more length in the harness behind the trim, pop out the push in clips that are holding the harness then reinstall the center trim pieces. Install the USB housing on passenger side of console. See Fig 6



Fig 6

Step 6

Install the trim panels on driver side and passenger side by drilling / tapping holes for #10-24 hardware at the proper locations on console plates to match the trim panels with the vehicle dash. See Fig 7.



Fig 7

INSTALLATION INSTRUCTIONS

Step 7

Now the console can be installed with all other equipment required –
See Fig 8 below as an example.



Fig 8