



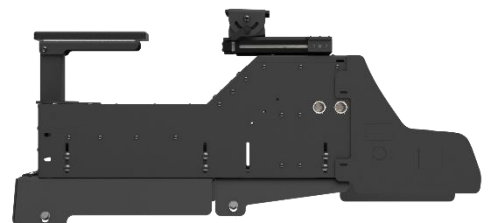
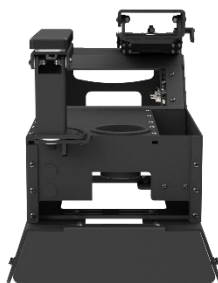
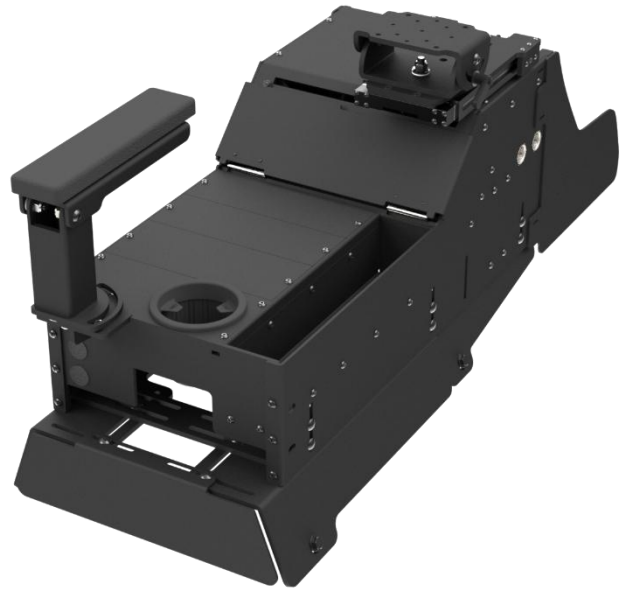
## 2020+ GM TRUCK CONSOLE

Vehicle specific console designed for the 2020+ GMC Trucks. Includes mounting legs and trim panels for fast, simple installation with no drilling required, maintaining the vehicle's interior contours for a clean, finished appearance. Features open-top side pocket storage for quick placement of essential items during operation, with versions available that include integrated mounting for Brother PJ-series printers.

Ample faceplate space accommodates radio, control, and auxiliary equipment, with an internally integrated mounting bracket for securing a power adapter.

### FEATURES

- Aircraft-grade aluminum construction provides a rugged, lightweight solution
- Ergonomic, compact, and flexible fit solution for safety and comfortable use
- CNC laser cut design offers OEM aesthetics for a look which follows the shapes and contours of the vehicle interior
- Vehicle specific mounting leg kit and trim panels requiring no drilling and fast, easy installation
- Ample room to mount radios, light and siren controllers, and accessories
- Dual 12V sockets with placement options to power auxiliary equipment
- Can be used with either PMT's Mousetrap or Gamber-Johnson's Mongoose motion mount
- Printer mounting compatibility for Brother PocketJet 7 and 8 series, version dependent
- Integrated internal power adapter mounting bracket provides convenient location positioning
- Integrated USB port relocation allows access to OEM connectors once the console has been installed
- Includes standard single breakaway armrest and anti-rattle cup holder assembly, version dependent
- Equipment specific faceplates included, version dependent
- Additional width provides open-top side storage pocket
- Customizable with an array of accessories
- Limited Lifetime Warranty





## TECHNICAL SPECIFICATIONS AND INCLUDED EQUIPMENT

ITEM NO.	DESCRIPTION	HEIGHT	WIDTH	DEPTH	WEIGHT
AS4.C257.101	2020+ GM Truck Console	16.20"	14.70"	44.10"	28.95 lbs
AS4.C257.102	2020+ GM Truck Console with Mousetrap	16.20"	14.70"	44.10"	32.65 lbs
AS4.C257.105	2020+ GM Truck Console Box	13.60"	14.70"	42.20"	22.10 lbs
AS4.C257.111	2020+ GM Truck Printer Console	16.20"	14.70"	44.10"	33.30 lbs
AS4.C257.112	2020+ GM Truck Printer Console with Mousetrap	16.20"	14.70"	44.10"	38.30 lbs
AS4.C257.115	2020+ GM Truck Printer Console Box	13.60"	14.70"	42.20"	24.90 lbs

ITEM NO.	CONSOLE BOX	MOUNTING LEGS	TRIM PANELS	PRINTER MOUNT	POWER ADAPTER MOUNT BRACKET	ARMREST	CUP HOLDER	FACEPLATES AND BLANKS	MOUSETRAP MOTION MOUNT
AS4.C257.101	✓	✓	✓		✓	✓	✓	✓	
AS4.C257.102	✓	✓	✓		✓	✓	✓	✓	✓
AS4.C257.105	✓	✓	✓		✓				
AS4.C257.111	✓	✓	✓	✓	✓	✓	✓	✓	
AS4.C257.112	✓	✓	✓	✓	✓	✓	✓	✓	✓
AS4.C257.115	✓	✓	✓	✓	✓				

