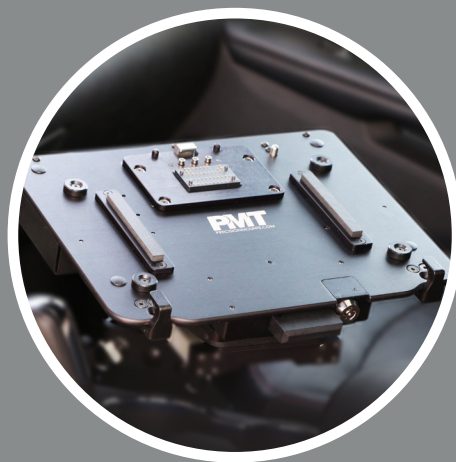




DOCKING STATIONS

FOR YOUR LAPTOP AND TABLET



PMT precision
mounting
technologies



DOCKING STATION FOR DELL RUGGED LAPTOP FRONT PORT

ITEM NUMBERS:

AS7.D902.100 Lite Port NO RF
AS7.D902.102 Lite Port TRI RF
AS7.D902.110 Full Port NO RF
AS7.D902.112 Full Port TRI RF
AS7.D902.104 Cradle NO RF

- Compatible with Dell laptop models Pro Rugged 13 and Pro Rugged 14, Latitude 5430 and 7330
- Compatible with legacy Dell rugged laptops with optional fit kit (purchased separately)
- Port replication includes: USB-C 5Gbps, USB-A 5Gbps (x2), USB-A 480Mbps, RJ-45 Ethernet, Serial RS232, HDMI on Full Port version
- Front facing ports keeps cables within footprint of the dock
- Integrated cable management tie rail
- Optional RF for WiFi, GPS, and cellular
- Extreme compact size preserves cabin space and increases user safety
- CNC machined aluminum construction
- Auto-latching feature for operator safety
- Floating connector design ensures reliable operation
- Convenient, front-located push-to-release latch
- Key lockable for added theft deterrence
- Available in no-electronics cradle versions
- 3-Year Limited Warranty

CERTIFICATES & TESTING:

- Vibration & Shock per MIL-STD-810-H
- Cycle – Latch/Unlatch 30,000 cycles
- Shock-Crash Test - Simulates 30mph crash test
- Environmental - Humidity / Thermal Shock / Low Temp Storage / High Temp Storage
- FCC, CE, UKCA, RoHS
- EMC Testing - EN 50498 / CISPR 32 – Class B / ICES-0003



DOCKING STATION FOR DELL RUGGED LAPTOP REAR PORT

ITEM NUMBERS:

AS7.D903.100 Rear Port Lite NO RF
AS7.D903.102 Rear Port Lite TRI RF
AS7.D903.110 Rear Port Full NO RF
AS7.D903.112 Rear Port Full TRI RF

- Compatible with Dell laptop models Pro Rugged 13 and Pro Rugged 14, Latitude 5430 and 7330
- Compatible with legacy Dell rugged laptops with optional fit kit (purchased separately)
- Port replication includes: USB-C 5Gbps, USB-A 5Gbps (x2), USB-A 480Mbps, RJ-45 Ethernet, Serial RS232, HDMI on Full Port version
- Rear facing ports provide easier access to ports once mounted into a vehicle
- Integrated cable management tie rail
- Optional RF for WiFi, GPS, and cellular
- Extreme compact size preserves cabin space and increases user safety
- CNC machined aluminum construction
- Auto-latching feature for operator safety
- Floating connector design ensures reliable operation
- Convenient, front-located push-to-release latch
- Key lockable for added theft deterrence
- Available in no-electronics cradle versions
- 3-Year Limited Warranty

CERTIFICATES & TESTING:

- Vibration & Shock per MIL-STD-810-H
- Cycle – Latch/Unlatch 30,000 cycles
- Shock-Crash Test - Simulates 30mph crash test
- Environmental - Humidity / Thermal Shock / Low Temp Storage / High Temp Storage
- FCC, CE, UKCA, RoHS
- EMC Testing - EN 50498 / CISPR 32 – Class B / ICES-0003



DOCKING STATION FOR DELL RUGGED 10" TABLET

ITEM NUMBERS:

AS7.D922.100 LITE (without HDMI)
AS7.D922.110 FULL (with HDMI)
AS7.D922.104 No Electronics Cradle

- Compatible with Dell tablet models Pro Rugged 10 and Latitude 7030
- Top-facing I/O ports: USB 3.1 Type-A (2), Ethernet, USB Type-C, Serial RS232, HDMI ('FULL' version only)
- Integrated cable management tie rail
- Extreme compact size preserves cabin space and ensures user safety
- CNC machined aluminum construction
- Auto-latch mechanism ensures tablet is latched when docked
- Simple, one-handed operation
- Key lockable for added theft deterrence
- Allows easy access to the tablet's built-in stylus
- Available in no-electronics cradle version
- Tablet cooling fan ventilation slots
- 3-Year Limited Warranty

CERTIFICATES & TESTING:

- MIL-STD-810-H
- Vibration & Shock per MIL-STD-810-H
- Cycle – Latch/Unlatch 30,000 cycles
- Shock-Crash Test - Simulates 30mph crash test
- Environmental - Humidity / Thermal Shock / Low Temp Storage / High Temp Storage
- FCC, CE, UKCA, RoHS
- EMC Testing - EN 50498 / CISPR 32 – Class B / ICES-0003



DOCKING STATION FOR DELL RUGGED 12" TABLET

ITEM NUMBERS:

AS7.D921.100 NO RF LITE
AS7.D921.102 QUAD RF LITE
AS7.D921.110 NO RF FULL
AS7.D921.112 QUAD RF FULL
AS7.D921.104 Cradle NO RF

- Compatible with Dell tablet models Pro Rugged 12 and Latitude 7230
- Top-facing I/O ports: USB 3.1 Type-A (2), Ethernet, USB Type-C, Serial RS232, HDMI ('FULL' version only)
- Integrated cable management tie rail
- Optional Quad RF Pass-Through (SMA)
- Extreme compact size preserves cabin space and ensures user safety
- CNC machined aluminum construction
- Auto-latch mechanism ensures tablet is latched when docked
- Simple, one-handed operation
- Key lockable for added theft deterrence
- Allows easy access to the tablet's built-in stylus
- Available in no-electronics cradle version
- Tablet cooling fan ventilation slots
- 3-Year Limited Warranty

CERTIFICATES & TESTING:

- MIL-STD-810-H
- Vibration & Shock per MIL-STD-810-H
- Cycle – Latch/Unlatch 30,000 cycles
- Shock-Crash Test - Simulates 30mph crash test
- Environmental - Humidity / Thermal Shock / Low Temp Storage / High Temp Storage
- FCC, CE, UKCA, RoHS
- EMC Testing - EN 50498 / CISPR 32 – Class B / ICES-0003
- Australian Regulatory Compliance Mark





FLOOR STAND KIOSK FOR DELL LATITUDE 7230 RUGGED EXTREME TABLET

ITEM NUMBERS:

AS9.C185.027-1 Floor Stand Kiosk For Dell
Latitude 7230 Tablet

- Aircraft-grade aluminum construction provides a rugged, lightweight solution
- Steel base for sturdy positioning
- Cable routing channels through pedestal upright offer increased security and tamper resistance
- Countersunk holes for optional fixing of the base to the floor
- Black epoxy powder coat finish provides years of easy maintenance
- Tamper resistant tablet enclosure to increase security and deter theft
- Conceals cables and all tablet front and side buttons, tablet rear power button access only for further increased security
- Compact low-profile design
- Tablet enclosure can be mounted in landscape or portrait orientation
- Compatible with tablets that have screen protection film installed
- Limited Lifetime Warranty

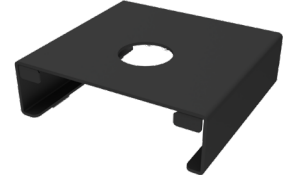


ENCLOSURE FOR DELL LATITUDE 7230 RUGGED EXTREME TABLET

ITEM NUMBERS:

AS7.W001.400 Enclosure For Dell Latitude
7230 Tablet

- Aluminum construction with black epoxy powder coat finish provides years of maintenance free use
- Tamper resistant to increase security and deter theft
- Conceals charging cable and all front and side buttons
- Power button access on rear
- Fixed mount solution for added protection of the tablet
- Compact low profile design
- VESA 75 and VESA 100 mounting interface to allow multiple mounting options
- Can be mounted in landscape or portrait orientation
- Compatible with tablets that have screen protection film installed
- *When wall mounting, access to rear power button is only possible by use of additional equipment or spacer for appropriate clearance.
- Limited Lifetime Warranty



ENCLOSURE FOR DELL OPTIPLEX MICRO OPTICAL DISK DRIVE

ITEM NUMBERS:

AS9.C080.100 Enclosure For Dell Optiplex
Micro ODD

- Compatible with Dell Optiplex Micro desktop computer and Dell DW316 Optical Disk Drive
- Combines desktop computer case and external disk drive into a single unit
- Compact low profile design to minimize occupied desk space
- Cable management zip ties included
- Foam mounting feet for reduced friction
- Limited Lifetime Warranty



UNIVERSAL LAPTOP CRADLES

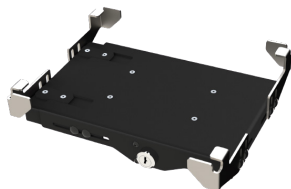
ITEM NUMBERS:

AS7.U101.100 Standard Cradle
AS7.U101.101 Thick Widescreen Cradle
AS7.U101.102 Thin Widescreen Cradle

- Device dimensions:
 - **AS7.U101.100**
Width: 10.2" to 14.2"
Depth: 8.2" to 10.2"
Height: 1.0" to 1.90"
 - **AS7.U101.101**
Width 11.2" to 15.0"
Depth 8.2" to 10.2"
Height 1.05" to 1.90"
 - **AS7.U101.102**
Width: 11.2" to 15.0"
Depth: 8.2" to 10.2"
Height: 0.60" to 1.35"
- User adjustable
- Extreme compact size preserves cabin space and ensures user safety
- CNC machined aluminum construction
- Key locking mechanism for increased security
- Limited Lifetime Warranty

CERTIFICATES & TESTING:

- ROHS, FCC, CE
- MIL-STD 810G Shock/Vibration
- SAE J1455 Crash Test
- Cycle Tested – Locking and Docking Mechanism
- Environmental Tested – High/Low Temperature, Humidity



UNIVERSAL TABLET CRADLES

ITEM NUMBERS:

AS7.U102.100 Standard Cradle
AS7.U102.101 Standard Cradle with Alternative Clamps
AS7.U102.300 XL Cradle

- Device dimensions:
 - **AS7.U102.100**
Width 9.375" to 11.5"
Depth 6.25" to 8.5"
Height 0.25" to 1.0"
 - **AS7.U102.101**
Width: 9.375" to 11.5"
Depth: 6.25" to 8.5"
Height: 0.25" to 1.0"
 - **AS7.U102.300**
Width 12" to 14.125"
Depth 7.3" to 10.8"
Height 0.359" to 1.2"
- User adjustable
- Extreme compact size preserves cabin space and ensures user safety
- CNC machined aluminum construction
- Key locking mechanism for increased security
- Limited Lifetime Warranty

CERTIFICATES & TESTING:

- ROHS, FCC, CE
- MIL-STD 810G Shock/Vibration
- SAE J1455 Crash Test
- Cycle Tested – Locking and Docking Mechanism
- Environmental Tested – High/Low Temperature, Humidity



POWER ADAPTERS

ITEM NUMBERS:

PS046 Dell 11-16v Input, 120w 7.4mm barrel connector Output
PS040 Dell 11-16v Input, 100w USB-C connector Output
PS024 Dell 20-60v Input, 90w 7.4mm barrel connector Output (Isolated)



SIDE SCREEN SUPPORT

ITEM NUMBERS:

AS7.D900.001 Dell Front Port Side Screen Support
AS7.D901.002 Dell Rear Port Side Screen Support

- Compatible with PMT Dell laptop docks
- Provides additional support for laptop screen
- Reduces strain and wear on laptop screen hinges aiding increased longevity
- Easy-release handle for adjustment and position locking
- Limited Lifetime Warranty



LAPTOP DOCK RETROFIT KITS

ITEM NUMBERS:

AS7.D900.004 Dell Laptop Retrofit Front Clamp Kit V1
AS7.D900.005 Dell Laptop Retrofit Front Clamp Kit V2
AS7.D900.006 Dell Laptop Retrofit Front Pocket Kit from PMT
AS7.D900.007 Dell Laptop Retrofit Front Clamp Kit V3

- Compatible with Dell laptop models
- Simple installation, less than two minutes
- High grade metal construction
- Durable black anodized finish to match existing equipment
- Limited Lifetime Warranty



DOCKING STATIONS

PMT

WWW.PRECISIONMOUNTS.COM

515 58th Ave SE, Calgary, Alberta, T2H 0P7 Canada
1.888.869.7652 | sales@precisionmounts.com