



STARLINK MINI MOUNTS USER GUIDE

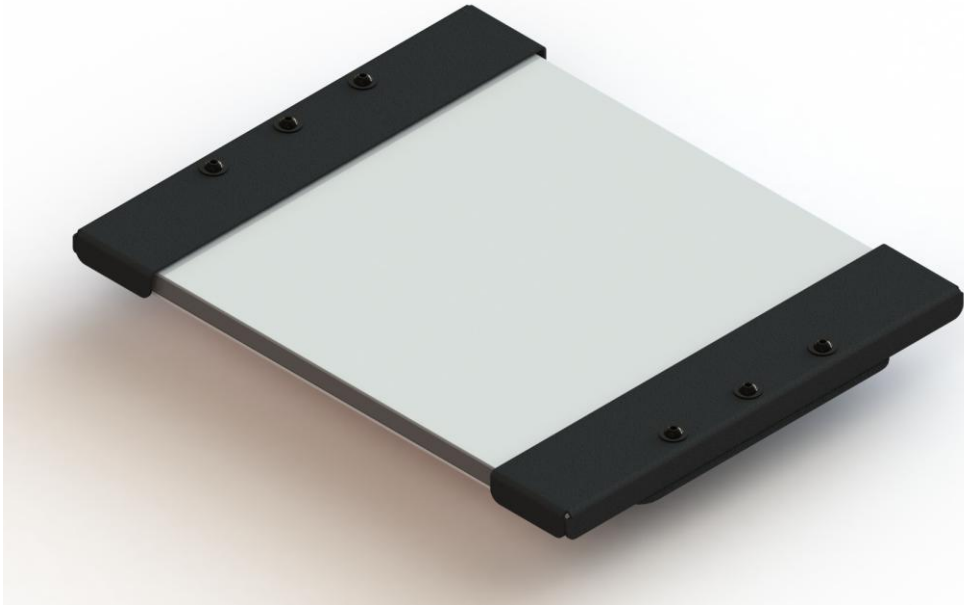
Description	Part Number
MOUNT FOR STARLINK MINI	AS5.T500.012
MAGNET MOUNT FOR STARLINK MINI	AS5.T500.016

Product Mounting Disclaimer

Precision Mounting Technologies Ltd (PMT) are not liable under any theory of contract or tort law for any loss, damage, personal injury, special, incidental or consequential damages for personal injury or other damage of any nature arising directly or indirectly as a result of the improper installation or use of its products in vehicle or any other application. In order to safely install and use PMT products full consideration of vehicle occupants, vehicle systems (i.e., the location of fuel lines, brake lines, electrical, drive train or other systems), air-bags and other safety equipment is required. PMT specifically disclaims any responsibility for the improper use or installation of its products not consistent with original vehicle manufactures' specifications and recommendations, PMT product instruction sheets, or workmanship standards as endorsed through PMT policies and EULA.



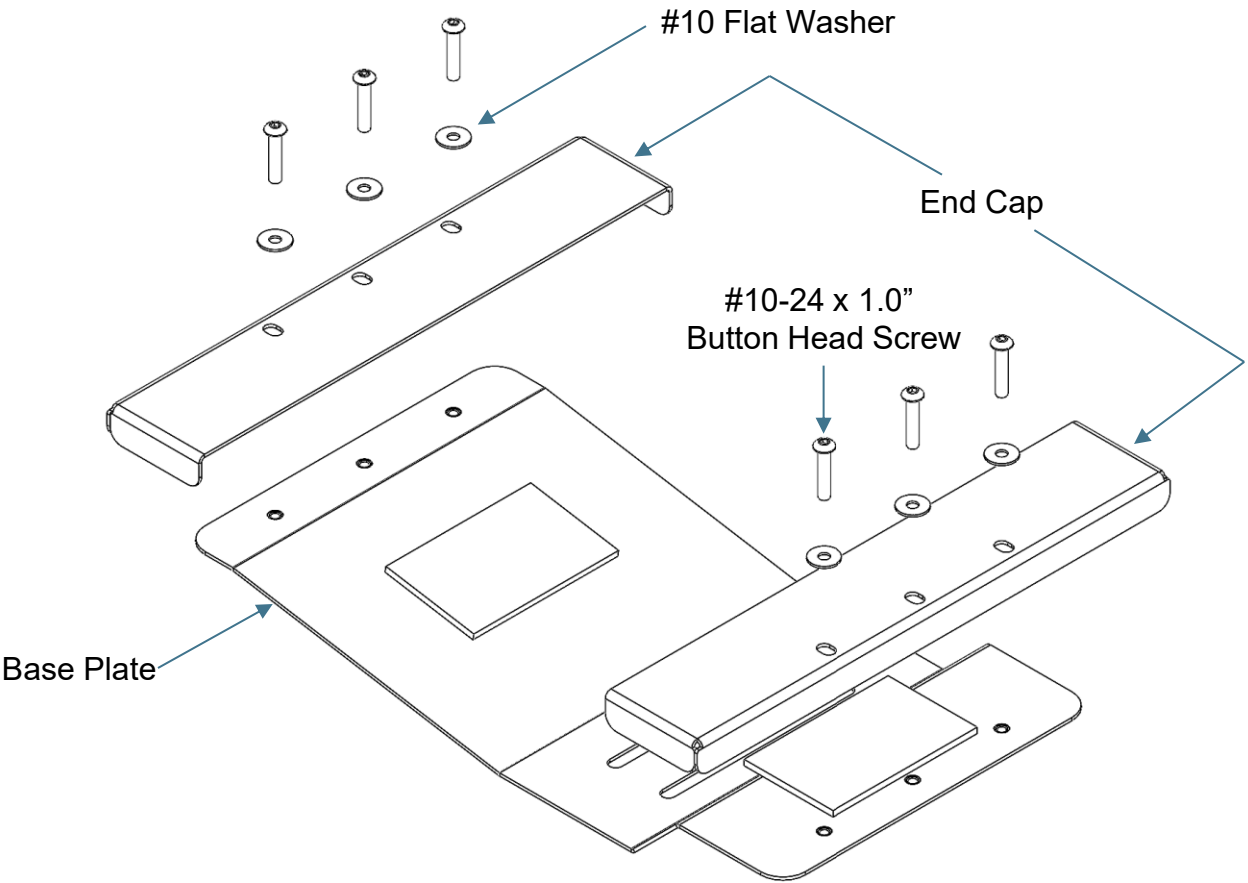
PRODUCT VISUAL



PARTS & HARDWARE DESCRIPTION

AS5.T500.012

Quantity	Description
1	Base Plate
2	End Cap
6	#10 Flat Washer
6	#10-24 x 1.0" Button Head Screw

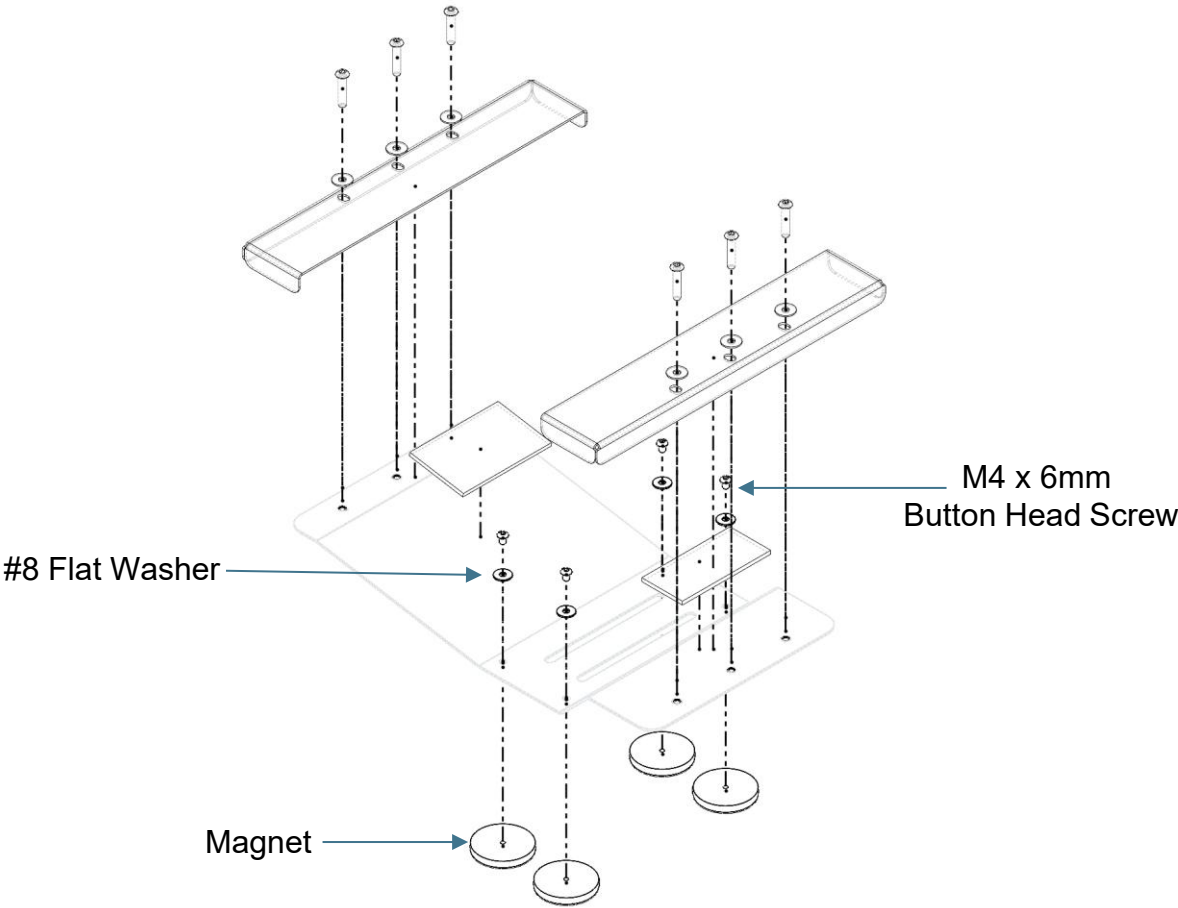


PARTS & HARDWARE DESCRIPTION

AS5.T500.016

Additional components added to AS5.T500.012

Quantity	Description
4	Neodymium Pot Magnet
4	M4 x 6mm Button Head Screw
4	#8 Flat Washer



INSTALLATION INSTRUCTIONS

Tools and hardware required:

- Imperial socket sets and ratchet
- Imperial Allen keys

Step 1

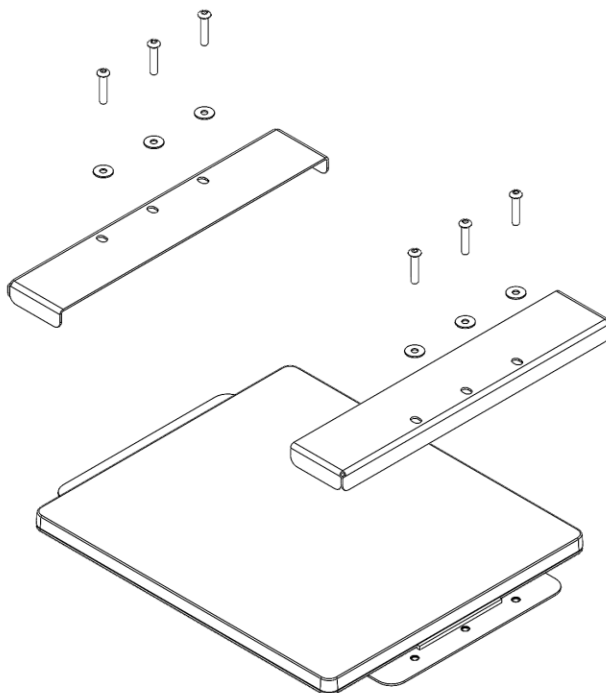
Mount the base plate to your desired mounting location using the amps hole pattern provided on the base plate. Please note, PMT does not supply the hardware to mount the base plate to your mounting location. **We recommend you use ¼" hardware to mount the baseplate.**

Step 2

Centre your Starlink Mini to the base plate.

Step3

Centre the end caps around the Starlink Mini and attach via the #10 supplied screws and washer, as shown below.



INSTALLATION INSTRUCTIONS

MAGNET MOUNT SPECIFIC

The intended install surface must be a ferromagnetic metal. Ensure the surface is clean, dry and free of any debris. It is important to note that any paint coatings, rust, rough surfaces, and certain environmental conditions can significantly reduce the holding force of the magnets.

Disclaimer:

This product is intended for off-highway use only. PMT is not responsible or liable for any damage that may occur due to improper usage.

