



UNIVERSAL STORAGE TRAY CONSOLE PRINTER USER GUIDE

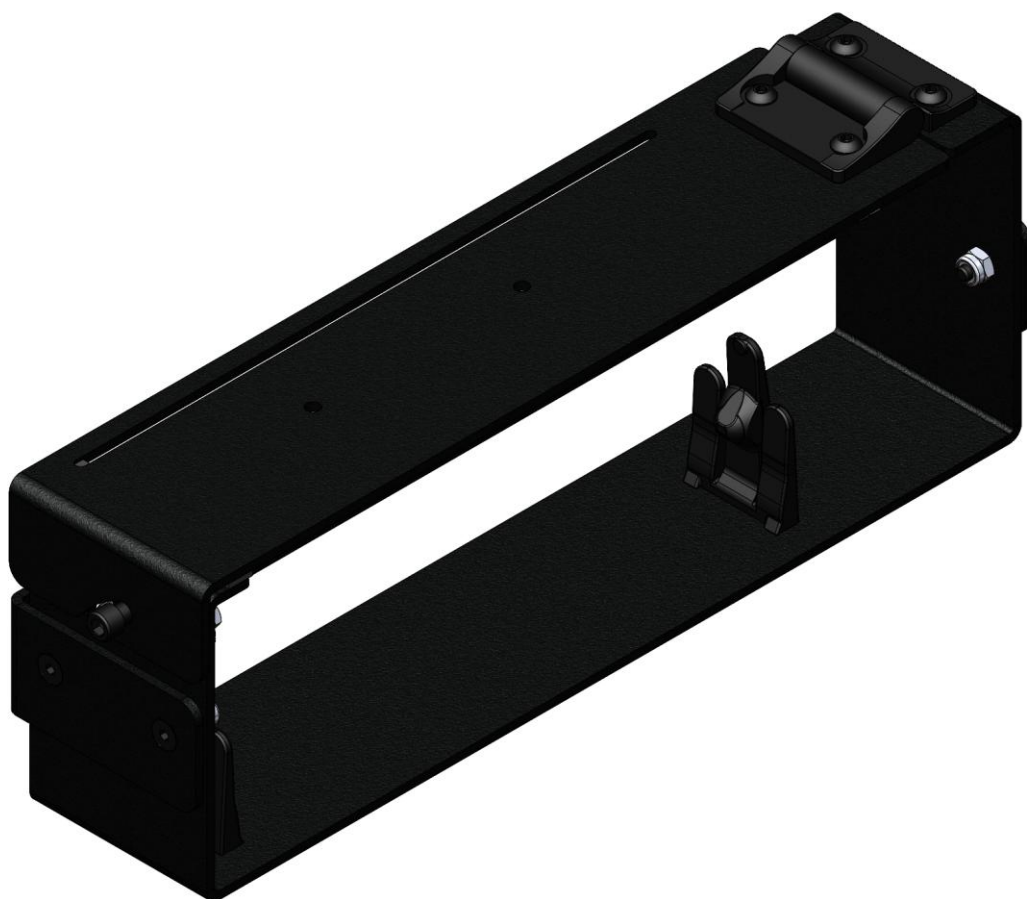
Description	Part Number
UNIVERSAL STORAGE TRAY CONSOLE PRINTER	AS4.C256.200

Product Mounting Disclaimer

Precision Mounting Technologies Ltd (PMT) are not liable under any theory of contract or tort law for any loss, damage, personal injury, special, incidental or consequential damages for personal injury or other damage of any nature arising directly or indirectly as a result of the improper installation or use of its products in vehicle or any other application. In order to safely install and use PMT products full consideration of vehicle occupants, vehicle systems (i.e., the location of fuel lines, brake lines, electrical, drive train or other systems), air-bags and other safety equipment is required. PMT specifically disclaims any responsibility for the improper use or installation of its products not consistent with original vehicle manufactures' specifications and recommendations, PMT product instruction sheets, or workmanship standards as endorsed through PMT policies and EULA.



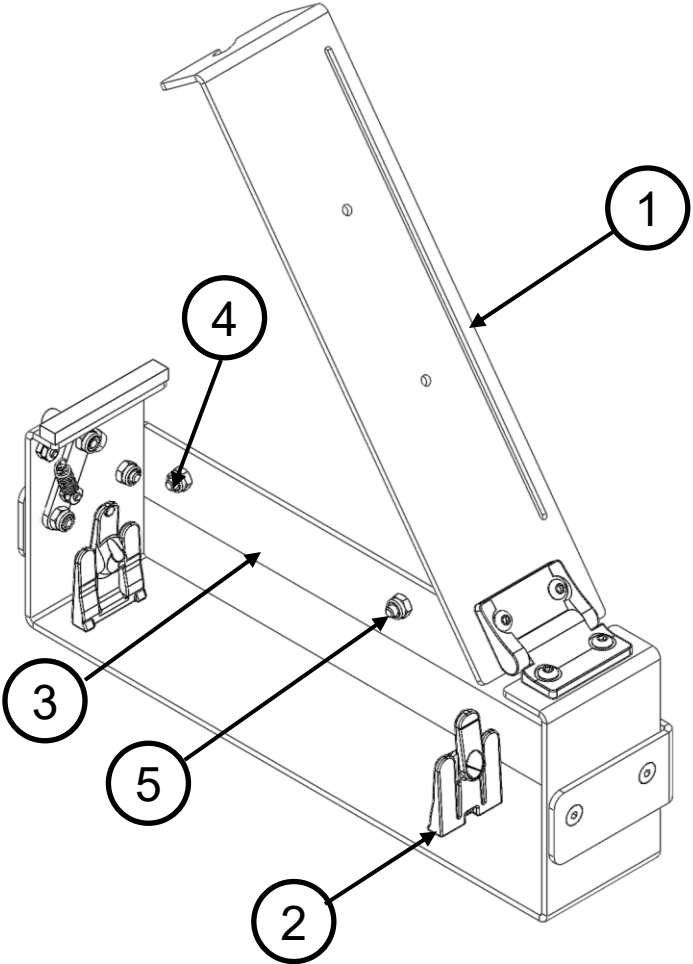
PRODUCT VISUAL



PARTS & HARDWARE DESCRIPTION

AS4.C256.200

ITEM NO.	DESCRIPTION	QUANTITY
1	PRINTER MOUNTING PLATE	1
2	PAPER MOUNTING BRACKETS	2
3	PRINTER ASSEMBLY MOUNTING PLATE	1
4	10-24 X 5/8" HED HEAD SCREW	3
5	10-24 NYLOK NUT	3
6	FOAM TAPE	1



INSTALLATION INSTRUCTIONS

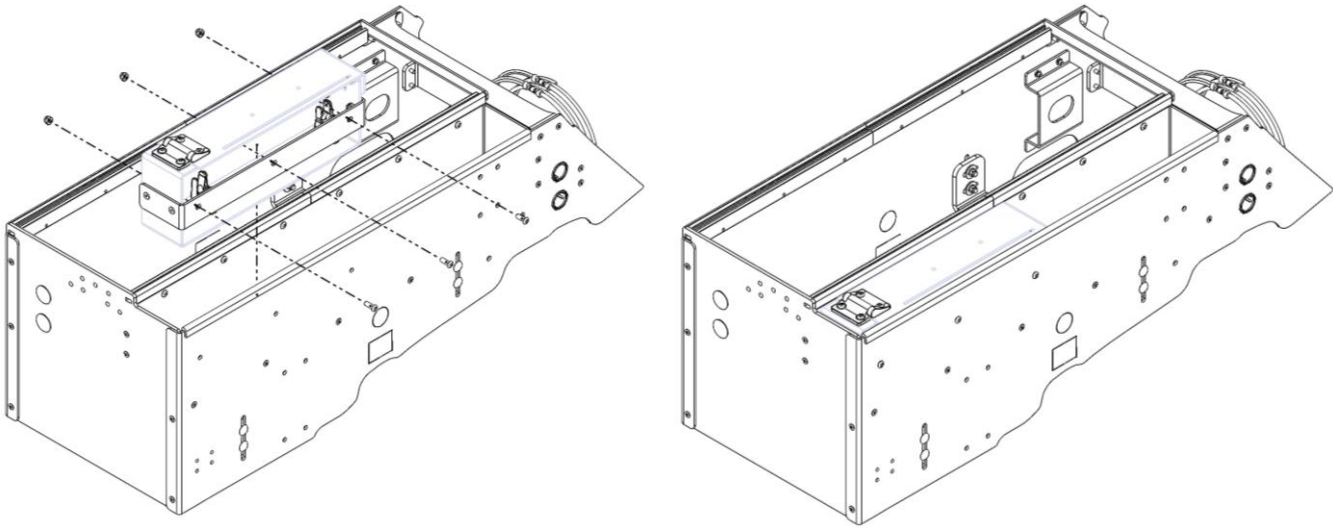
Tools and hardware required:

- Imperial socket sets and ratchet
- Allen keys

Step 1

Place universal storage tray console printer into the desired PMT console with a storage tray. Attach via the included 10-24 hardware. If the console does not have predrilled mounting holes, please use item #3 (mounting plate) as a jig and drill three 0.25" holes in the side on the console.

Use the supplied foam tape to dampen any vibration or noise if needed.



PRINTER PAPER INSTALLATION INSTRUCTIONS

Step 1

Rotate the latching mechanism counterclockwise and lift the printer up.



Step 2

Locate the printer paper onto one of the printer mounting brackets. Then press firmly down to locate the paper into the other printer mounting bracket.



PRINTER PAPER INSTALLATION INSTRUCTIONS CONT.

Step 3

Carefully feed the printer through the printer mounting plate and then through the printer. Close the printer and ensure the locking mechanism is working.

