



UNIVERSAL TABLET CRADLE USER GUIDE

Description	Part Number
UNIVERSAL TABLET CRADLE	AS7.U102.100
UNIVERSAL TABLET CRADLE WITH ALTERNATIVE CLAMPS	AS7.U102.101
UNIVERSAL TABLET CRADLE FOR HP ELITE X2	AS7.U102.102
UNIVERSAL TABLET CRADLE FOR HP ELITE X2 WITH TARGUS CASE	AS7.U102.102-1
UNIVERSAL TABLET CRADLE FOR ECOM TAB1	AS7.U102.104
LOCKING CRADLE FOR SAMSUNG GALAXY TAB ACTIVE PRO	AS7.U102.105
UNIVERSAL TABLET CRADLE THICK	AS7.U102.107
XL UNIVERSAL TABLET CRADLE	AS7.U102.300

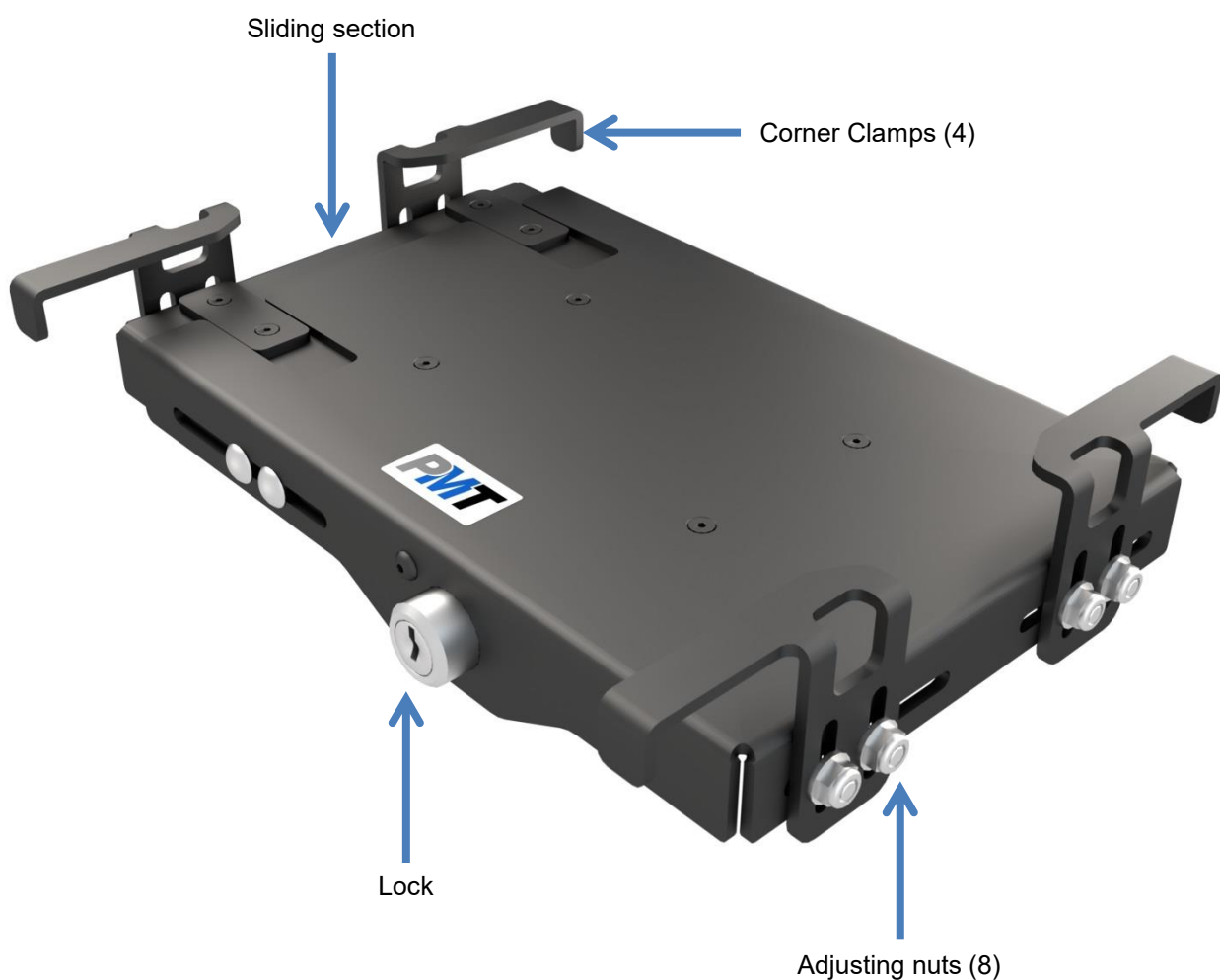
Product Mounting Disclaimer

Precision Mounting Technologies Ltd (PMT) are not liable under any theory of contract or tort law for any loss, damage, personal injury, special, incidental or consequential damages for personal injury or other damage of any nature arising directly or indirectly as a result of the improper installation or use of its products in vehicle or any other application. In order to safely install and use PMT products full consideration of vehicle occupants, vehicle systems (i.e., the location of fuel lines, brake lines, electrical, drive train or other systems), air-bags and other safety equipment is required. PMT specifically disclaims any responsibility for the improper use or installation of its products not consistent with original vehicle manufactures' specifications and recommendations, PMT product instruction sheets, or workmanship standards as endorsed through PMT policies and EULA.



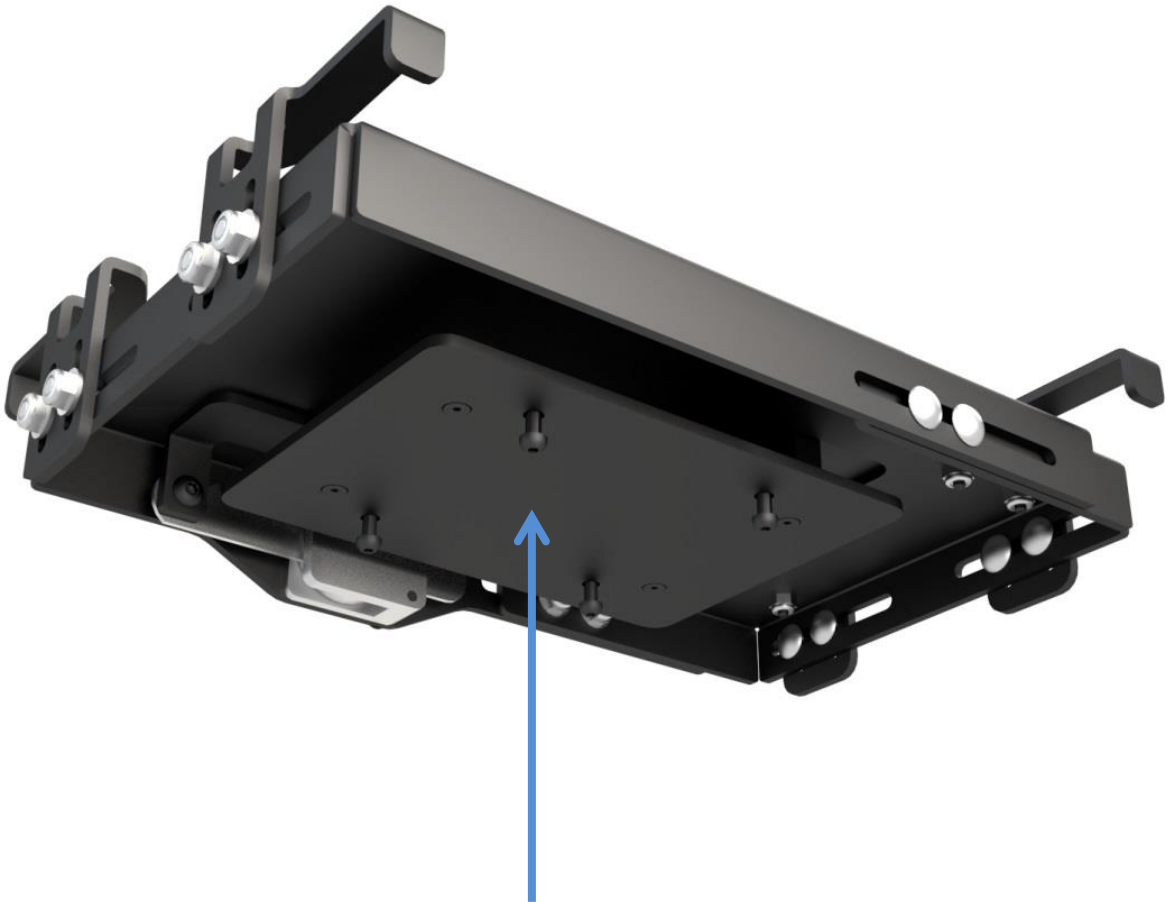
DESCRIPTION OF PARTS

TOP VIEW



DESCRIPTION OF PARTS

BOTTOM VIEW



VESA 75mm x 75mm interface / mounting plate (M4 threaded inserts)

INSTALLATION INSTRUCTIONS

Step 1

Unlock cradle by turning key horizontal to the left.

Open cradle by pulling the sliding section outwards.



Step 2

Loosen the adjusting nuts with 3/8" wrench so that the corner clamps can move freely



Step 3

Insert the tablet into the fixed side of the cradle

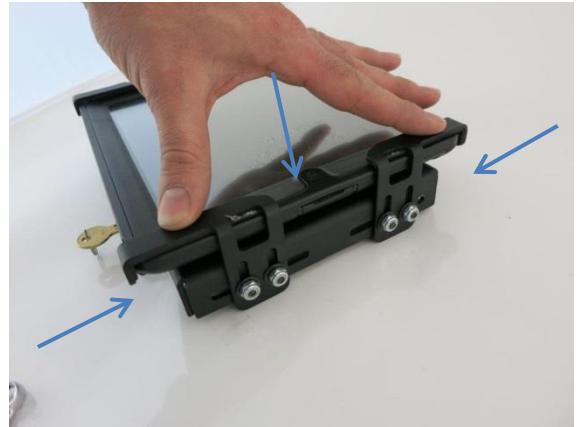


INSTALLATION INSTRUCTIONS

Step 4

Position the tablet so it is centered

Press the corner clamps down and together so the clamps are resting against the tablet.



Step 5

Tighten the adjusting nuts to secure their position

Ensure clamp hooks lay flat against the tablet



Step 6

Close the sliding section until it contacts the tablet

Repeat steps 4 & 5 for the clamps located on the sliding section



INSTALLATION INSTRUCTIONS

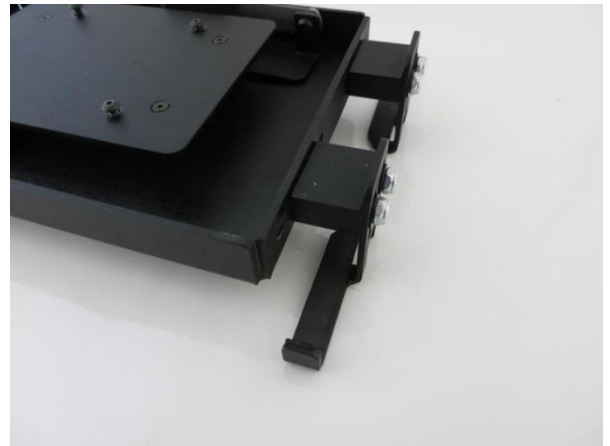
Step 7 (Optional):

If the size of the tablet you are using is larger than what our standard universal tablet cradle can accommodate, you can utilize a “fit kit” to adjust the range the cradle will accommodate. Fit kits are available from PMT at an extra cost.



Part# AS7.U102.001

Remove existing carriage bolts and replace with longer versions from fit kit. Install 2 spacers in between cradle and corner clamps on non-sliding section side of the cradle. If you need more width, repeat the process on the sliding section



Tip

Reverse the orientation of the adjusting nuts so that the nut is on the inside of the UTC for a cleaner/more ergonomic install (works with or without fit kits)



INSTALLATION INSTRUCTIONS

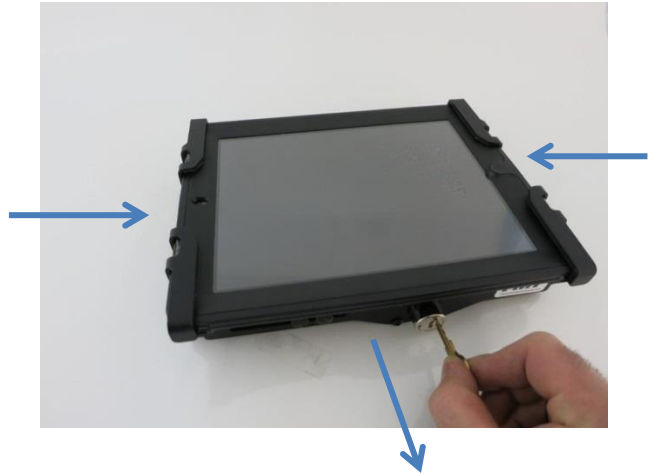
Using the Universal Tablet Cradle

Locking

With the cradle now adjusted and all nuts tightened, the tablet can be fully secured by locking the cradle.

Turn the key vertical and remove the key

Close the sliding section tight against the tablet, you should hear a distinct click when it locks



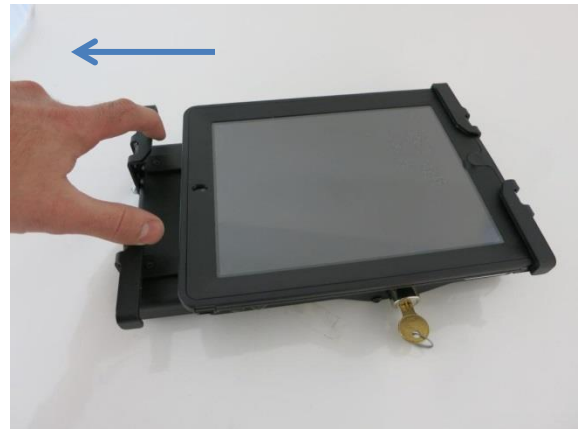
Unlocking

Unlock the cradle with the key

Pull the sliding section outward

Slide the tablet out of the clamps in the fixed section of the cradle

Remove the tablet



INSTALLATION INSTRUCTIONS

Mounting

VESA 75

The standard mounting/interface plate that comes with the cradle features an industry standard VESA 75mm x 75mm hole pattern (M4 threaded inserts). This allows easy mounting to many pre-existing mounts as well as dedicated mounts from PMT.



Wiring Tip

Secure all cables with cable ties to prevent strain/entanglement

PMT recommends powering vehicle cradles by hard wiring, using a clean ground direct from the vehicle battery (-) post, and (+) supply from a fused 12v location also directly from the vehicle battery.

We do NOT recommend relying on a cigarette socket adaptor for powering vehicle cradles.

All peripherals connecting to the docking station should get power and ground from the same location as the dock.

Visit www.precisionmounts.com for a copy of our general wiring and troubleshooting guide.