



2025+ CHEVROLET TAHOE CONSOLE

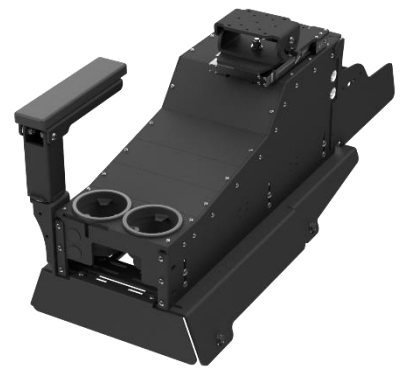
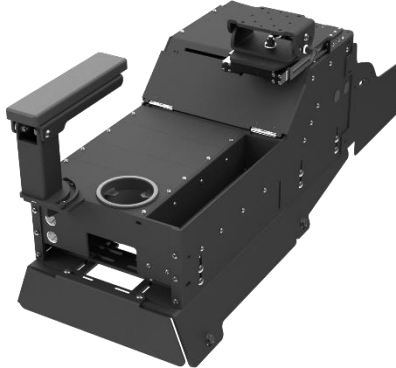
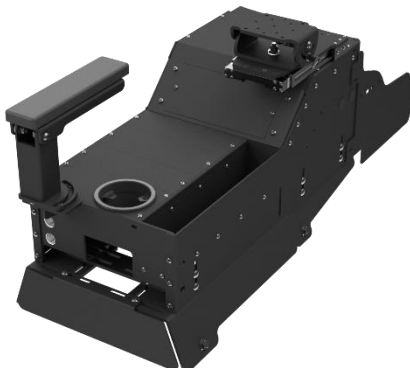
Vehicle specific console to fit the 2025+ Chevrolet Tahoe including mounting legs and trim panels to offer a fast, simple installation without the need for drilling whilst maintaining contours to match the vehicle's interior for a clean finished appearance. Select from versions include additional width for side storage, or narrow with side mounted armrest for easier access to gun racks, also available with integrated mounting for Brother PJ-series printers.

Ample faceplate space for all radio, control equipment and accessories, plus an internally integrated mounting bracket for securing a power adapter.



FEATURES

- Aircraft-grade aluminum construction provides a rugged, lightweight solution
- Ergonomic, compact, and flexible fit solution for safety and comfortable use
- CNC laser cut design offers OEM aesthetics for a look which follows the shapes and contours of the vehicle interior
- Vehicle specific mounting leg kit and trim panels requiring no drilling and fast, easy installation
- Ample room to mount radios, light and siren controllers, and accessories
- Dual 12V sockets with placement options to power auxiliary equipment
- Can be used with either PMT's Mousetrap or Gamber-Johnson's Mongoose motion mount
- Integrated internal power adapter mounting bracket provides convenient location positioning
- Integrated USB port relocation allows access to OEM connectors once the console has been installed
- Customizable with an array of accessories
- Single breakaway armrest, version dependent
- Single or dual cup holder, version dependent
- Equipment specific faceplates included, version dependent
- Additional width provides open-top side storage pocket, version dependent
- Printer mounting compatibility for Brother PocketJet 7 and 8 series, version dependent
- Limited Lifetime Warranty



TECHNICAL SPECIFICATIONS AND INCLUDED EQUIPMENT

ITEM NO.	DESCRIPTION	WEIGHT	HEIGHT	WIDTH	DEPTH	FACEPLATE SPACE	
						ANGLED SECTION	MAIN BODY
AS4.C251.101	2025+ Chevrolet Tahoe 12" Wide Console	26.15 lbs	16.73"	14.70"	39.79"	4.00"	9.50"
AS4.C251.102	2025+ Chevrolet Tahoe 12" Wide Console with Mousetrap	30.50 lbs	17.68"	14.70"	39.79"	4.00"	9.50"
AS4.C251.105	2025+ Chevrolet Tahoe 12" Wide Console Box	22.10 lbs	14.00"	14.70"	39.79"	4.00"	9.50"
AS4.C251.122	2025+ Chevrolet Tahoe 12" Wide Printer Console with Mousetrap	33.30 lbs	17.68"	14.70"	39.79"	N/A	9.50"
AS4.C252.101	2025+ Chevrolet Tahoe 9" Wide Console	20.60 lbs	16.31"	14.70"	37.32"	3.50"	10.00"
AS4.C252.102	2025+ Chevrolet Tahoe 9" Wide Console with Mousetrap	24.95 lbs	17.68"	14.70"	37.32"	3.50"	10.00"
AS4.C252.105	2025+ Chevrolet Tahoe 9" Wide Console Box	17.60 lbs	14.00"	14.70"	37.32"	3.50"	10.00"

ITEM NO.	CONSOLE BOX	MOUNTING LEGS	TRIM PANELS	PRINTER MOUNT	POWER ADAPTER MOUNT BRACKET	ARMREST	CUPHOLDER	FACEPLATES AND BLANKS	MOUSETRAP MOTION MOUNT
AS4.C251.101	✓	✓	✓		✓	✓ (in-console)	✓ (single)	✓	
AS4.C251.102	✓	✓	✓		✓	✓ (in-console)	✓ (single)	✓	✓
AS4.C251.105	✓	✓	✓		✓				
AS4.C251.122	✓	✓	✓	✓	✓	✓ (in-console)	✓ (single)	✓	✓
AS4.C252.101	✓	✓	✓		✓	✓ (side-mount)	✓ (dual)	✓	
AS4.C252.102	✓	✓	✓		✓	✓ (side-mount)	✓ (dual)	✓	✓
AS4.C252.105	✓	✓	✓		✓				

