



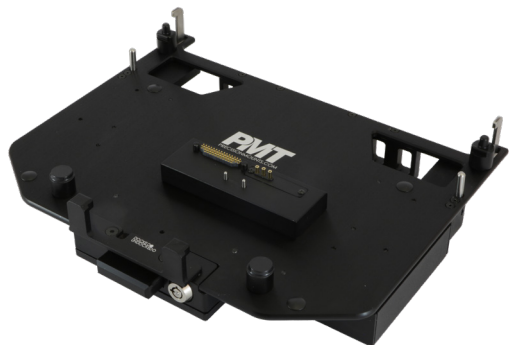
# DURABOOK

## DOCKING STATIONS

FOR YOUR LAPTOP AND TABLET



**PMT** precision  
mounting  
technologies



### DOCKING STATION FOR DURABOOK S14 LAPTOP

#### ITEM NUMBERS:

AS7.D014.500 NO RF Pass-Through  
AS7.D014.503 TRI RF Pass-Through  
AS7.D014.504 No Electronics Cradle

- Compatible with Durabook S14 Laptop
- Port replication includes: USB Type-A 3.0 (x2), USB Type-A 2.0 (x2), RJ-45 Ethernet, Serial RS232, HDMI, VGA, Headphone Jack, Mic Jack, Power Input
- Optional RF for use of external antenna
- Extreme compact size preserves vehicle cabin space and increases user comfort and safety
- CNC machined aluminum construction
- Auto-latching feature for ease of use
- Floating connector design offers reliable operation
- Convenient, front-located push-to-release latch
- Key lockable for increased theft deterrence
- Universal VESA 75 mounting pattern
- Genuine OEM electronics provide maximum reliability
- Integrated cable management tie rail to reduce risk of unwanted disconnects
- 3-Year Limited Warranty

#### CERTIFICATES & TESTING:

- Vibration & Shock
- Cycle – Latch/Unlatch 30,000 cycles
- Shock-Crash Test - Simulates 30mph crash test
- Environmental
- EMC
- MIL-STD-810-G
- FCC, CE, UKCA, RoHS



### DOCKING STATION FOR DURABOOK Z14 LAPTOP

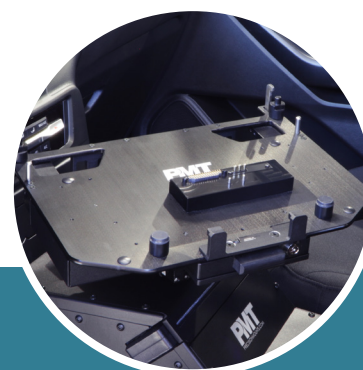
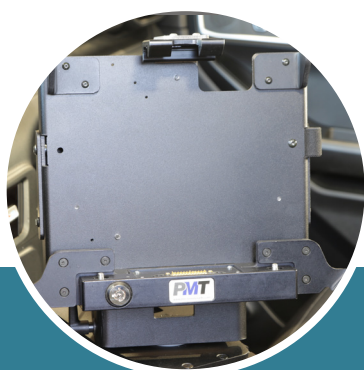
#### ITEM NUMBERS:

AS7.D014.600 NO RF Pass-Through  
AS7.D014.603 TRI RF Pass-Through  
AS7.D014.604 No Electronics Cradle

- Compatible with Durabook Z14 Laptop
- Port replication includes: USB Type-A 3.0 (x2), USB Type-A 2.0 (x2), RJ-45 Ethernet, Serial RS232, HDMI, VGA, Headphone Jack, Mic Jack, Power Input
- Optional RF for use of external antenna
- Extreme compact size preserves vehicle cabin space and increases user comfort and safety
- CNC machined aluminum construction
- Auto-latching feature for ease of use
- Floating connector design offers reliable operation
- Convenient, front-located push-to-release latch
- Key lockable for increased theft deterrence
- Universal VESA 75 mounting pattern
- Genuine OEM electronics provide maximum reliability
- Integrated cable management tie rail to reduce risk of unwanted disconnects
- 3-Year Limited Warranty

#### CERTIFICATES & TESTING:

- Vibration & Shock
- Cycle – Latch/Unlatch 30,000 cycles
- Shock-Crash Test - Simulates 30mph crash test
- Environmental
- EMC
- MIL-STD-810-G
- FCC, CE, UKCA, RoHS





## DOCKING STATION FOR DURABOOK U11 TABLET

### ITEM NUMBERS:

AS7.D011.100-P	Standard Dock, NO RF Pass-Through
AS7.D011.103-P	Standard Dock, TRI RF Pass-Through
AS7.D011.104-P	Standard Cradle, NO RF Pass-Through
AS7.D011.105-P	Standard Cradle, Tri RF Pass-Through
AS7.D011.200-P	Extended Dock, NO RF Pass-Through
AS7.D011.203-P	Extended Dock, TRI RF Pass-Through
AS7.D011.204-P	Extended Cradle, NO RF Pass-Through
AS7.D011.205-P	Extended Cradle, Tri RF Pass-Through

- Compatible with Durabook U11 Tablet
- Port replication includes: USB Type-A 3.0 (x2), USB Type-A 2.0 (x2), RJ-45 Ethernet, Serial RS232, HDMI, VGA, Headphone Jack, Mic Jack, Power Input
- Optional RF for use of external antenna
- Standard or Extended depth to accommodate accessories attached to rear of device
- Extreme compact size preserves vehicle cabin space and increases user comfort and safety
- CNC machined aluminum construction
- Connector pin design offers reliable operation
- Convenient, front-located push-to-release latch
- Key lockable for increased theft deterrence
- Universal VESA 75 mounting pattern
- Genuine OEM electronics provide maximum reliability
- Integrated cable management tie rail to reduce risk of unwanted disconnects
- 3-Year Limited Warranty

### CERTIFICATES & TESTING:

- Vibration & Shock
- Cycle – Latch/Unlatch 30,000 cycles
- Shock-Crash Test - Simulates 30mph crash test
- Environmental
- EMC
- MIL-STD-810-G
- FCC, CE, UKCA, RoHS



## DOCKING STATION FOR DURABOOK R11 TABLET

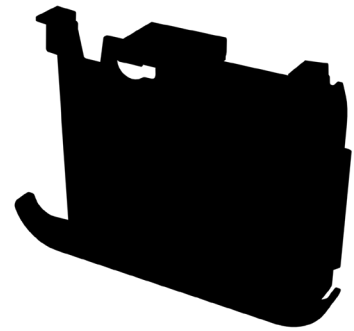
### ITEM NUMBERS:

AS7.G011.102-P	Standard Dock, DUAL RF Pass-Through
AS7.G011.104	Standard Cradle, No Electronics
AS7.G011.202-P	Extended Dock, DUAL RF Pass-Through
AS7.G011.204	Extended Cradle, No Electronics

- Compatible with Durabook U11 Tablet
- Port replication includes: USB Type-A 3.0 (x2), USB Type-A 2.0 (x2), RJ-45 Ethernet, Serial RS232, HDMI, Power Input
- Optional RF for use of external antenna
- Standard or Extended depth to accommodate accessories attached to rear of device
- Extreme compact size preserves vehicle cabin space and increases user comfort and safety
- CNC machined aluminum construction
- Connector pin design offers reliable operation
- Convenient, front-located push-to-release latch
- Key lockable for increased theft deterrence
- Universal VESA 75 mounting pattern
- Genuine OEM electronics provide maximum reliability
- Integrated cable management tie rail to reduce risk of unwanted disconnects
- 3-Year Limited Warranty

### CERTIFICATES & TESTING:

- Vibration & Shock
- Cycle – Latch/Unlatch 30,000 cycles
- Shock-Crash Test - Simulates 30mph crash test
- Environmental
- EMC
- MIL-STD-810-G
- FCC, CE, UKCA, RoHS



## DOCKING STATION FOR DURABOOK R8 TABLET

**COMING SOON!**

# **DURABOOK DOCKING STATIONS**

**PMT**

**WWW.PRECISIONMOUNTS.COM**

515 58th Ave SE, Calgary, Alberta, T2H 0P7 Canada  
1.888.869.7652 | [sales@precisionmounts.com](mailto:sales@precisionmounts.com)