



2021+ FORD MACH-E CONSOLE USER GUIDE

Description	Part Number
2021+ FORD MACH-E CONSOLE	AS4.C250.101
2021+ FORD MACH-E CONSOLE WITH MOUSETRAP	AS4.C250.102
2021+ FORD MACH-E CONSOLE BOX	AS4.C250.105

GENERAL INSTRUCTIONS

Safety:

- Safety is dependent on the proper installation and servicing of this product. It is important to read and follow all instructions before installing this product.
- Proper installation requires a good understanding of automotive electrical systems and is recommended to be performed by qualified technicians only.
- There are no adjustments or user serviceable parts within this product. Opening the case will void the product warranty
- Do not install equipment or route wires in the deployment path of any air bag, or where it may interfere with critical safety or operating controls of any vehicle.

Wiring:

- PMT does not recommend relying on a cigarette socket adaptor for powering critical equipment. We recommend hard wiring using a good clean ground direct from the vehicle battery neg(-) post, and pos(+) supply from a fused location also directly from the vehicle battery.
- Visit <https://www.precisionmounts.com/product-information> for a copy of our general wiring and troubleshooting guide.

Proper Use and Care:

- Proper care and use of this product is critical to maximize safety
- Clean equipment using a mild soap and water mix only
- Never use damaged equipment
- Inspect and tighten hardware periodically as required
- Contact PMT for product and service support

SERVICING [ENTRETIEN]:

- If this product does not work as intended, please contact PMT for troubleshooting or to schedule a service. *[Si le dock ne fonctionne pas comme prévu, contactez PMT pour le dépannage ou pour planifier un service.]*
- Service should be only done by authorized service center personnel. Unauthorized servicing of the unit will void its warranty. *[L'entretien du dock ne doit être effectué que par le personnel du centre de service autorisé. Un entretien non autorisé du dock annulera sa garantie.]*

Product Mounting Disclaimer

Precision Mounting Technologies Ltd (PMT) are not liable under any theory of contract or tort law for any loss, damage, personal injury, special, incidental or consequential damages for personal injury or other damage of any nature arising directly or indirectly as a result of the improper installation or use of its products in vehicle or any other application. In order to safely install and use PMT products full consideration of vehicle occupants, vehicle systems (i.e., the location of fuel lines, brake lines, electrical, drive train or other systems), air-bags and other safety equipment is required. PMT specifically disclaims any responsibility for the improper use or installation of its products not consistent with original vehicle manufactures' specifications and recommendations, PMT product instruction sheets, or workmanship standards as endorsed through PMT policies and EULA.



PRODUCT VISUALS

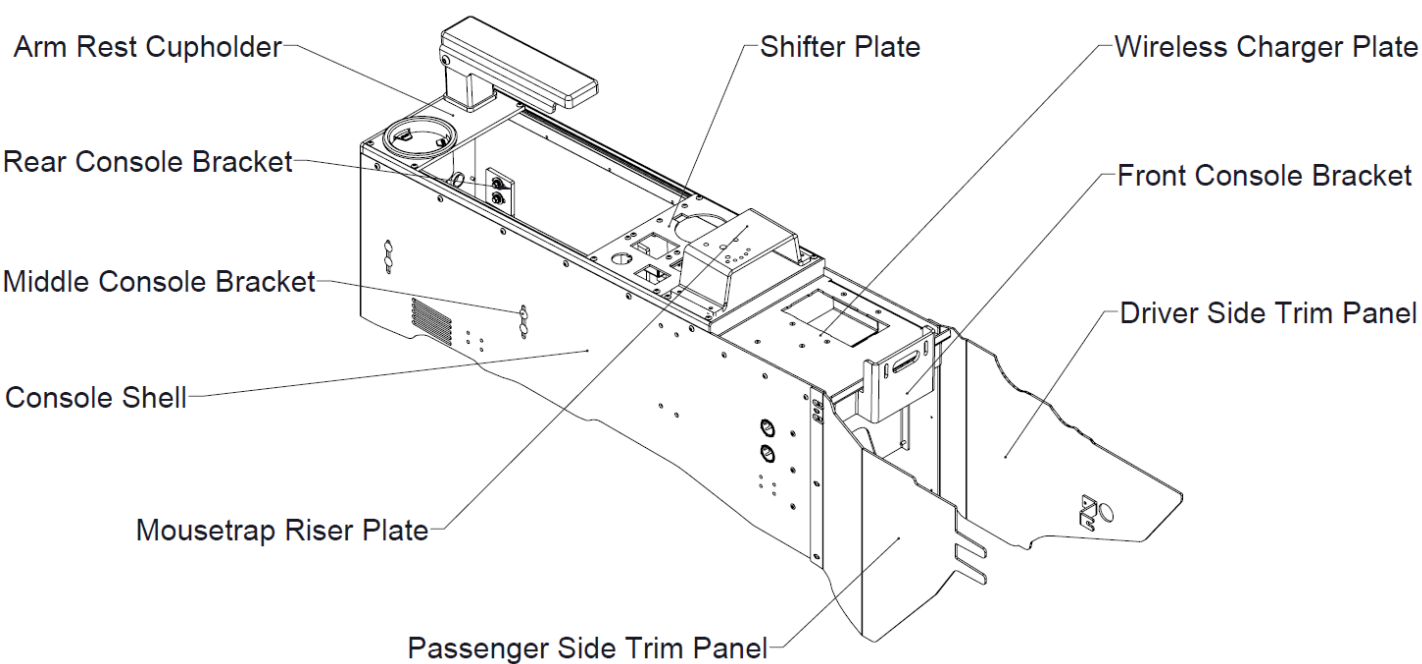


WWW.PRECISIONMOUNTS.COM

515 58th Ave SE, Calgary, Alberta, T2H 0P7
1-888-869-7652 | info@precisionmounts.com

PARTS & HARDWARE DESCRIPTION

AS4.C250.101/102/105



INSTALLATION INSTRUCTIONS

Tools and hardware required:

- Metric and Imperial socket sets and ratchet
- T50 and T55 Torx sockets
- Allen keys
- Trim Tools (optional)

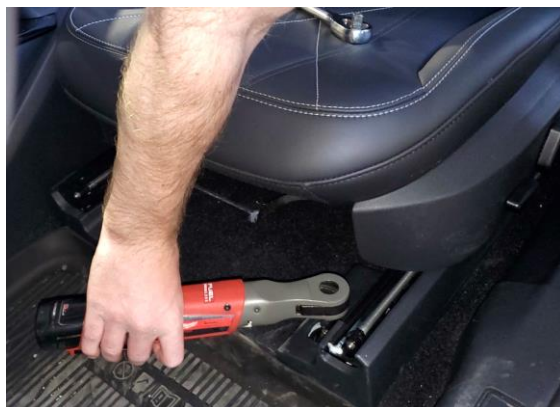
Installation parts:

Quantity	Description
1	Driver side trim panel
1	Passenger side trim panel
1	Wire harness for the 12v ports
2	Rear Console bracket
2	Middle Console Bracket
1	Front Console Bracket
1	Wireless Charger Plate
1	Shifter Plate
1	Console Shell
1	Arm Rest Cupholder
1	Mousetrap Riser Plate

INSTALLATION INSTRUCTIONS

Step 1

Remove OEM front seats



Step 2

Pry the shifter cover off



Step 3

Disconnect the cables and remove the OEM shifter and parking brake



INSTALLATION INSTRUCTIONS

Step 4

Remove the shifter housing



Step 5

Remove the panel underneath the display screen



Step 6

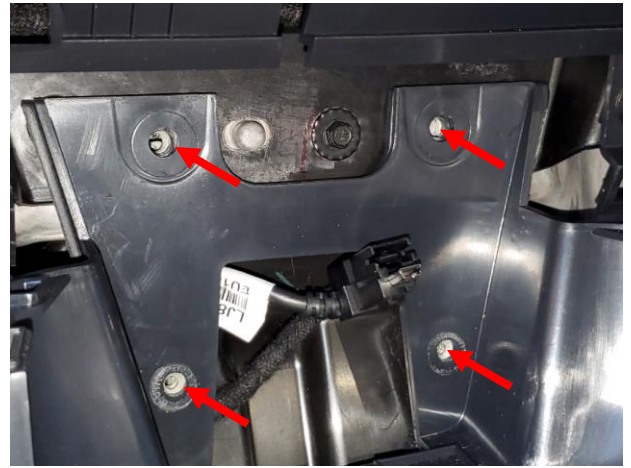
Pry the wireless charger cover off and disconnect all cables. Remove the wireless charger, USB ports, and key antenna. They will be re-installed later



INSTALLATION INSTRUCTIONS

Step 7

Remove the 4 screws at the front of the OEM console. The top two screws will be re-used for PMT console installation



Step 8

Remove the plastic cover beside the accelerator pedal and remove the screw underneath it. This screw will be re-used for PMT console installation



Step 9

Pry off the cover at the rear of the console. Remove the 2 screws near the bottom that connect the OEM console to the floor of the vehicle. These bolts will be re-used for PMT console installation



INSTALLATION INSTRUCTIONS

Step 10

Remove the two screws from the sides of the console that connect it to the floor of the vehicle. These screws will be re-used for console installation



Step 11

Ensure all cables are disconnected and remove the OEM console from the vehicle

Step 12

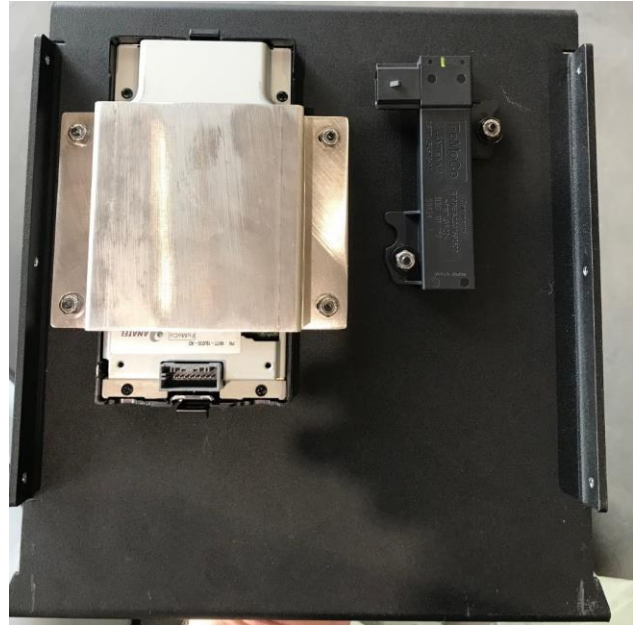
Remove the key antenna and control module from the middle of the OEM console



INSTALLATION INSTRUCTIONS

Step 13

Install the OEM wireless charger and one key antenna on the PMT wireless charger plate as shown using the #6-32 flathead screws and Nylok nuts provided



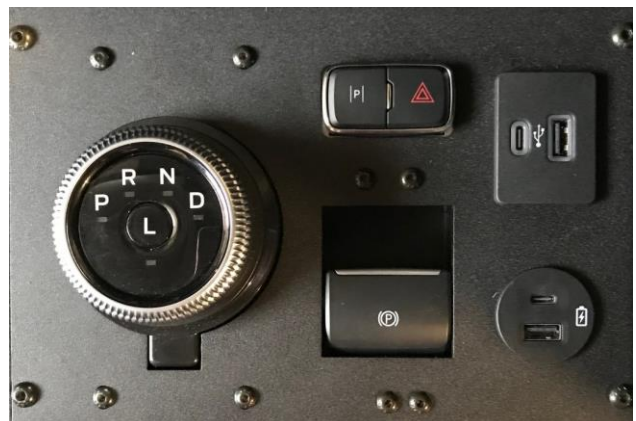
Step 14

Attach the second key antenna to the HVAC outlet as shown. We recommend drilling two holes and attach using screws and Nylok nuts

Photo Here

Step 15

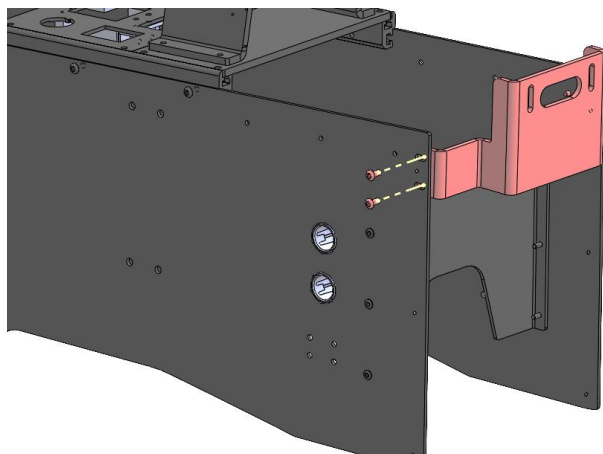
Install the shifter, parking brake, and USB ports into the shifter plate using the #8-32 screws provided.



INSTALLATION INSTRUCTIONS

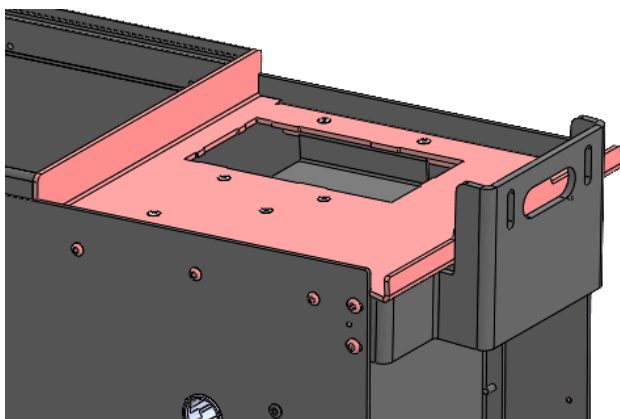
Step 16

Attach the front console bracket to the PMT console shell as shown using the #10-24 x 0.4375" screws provided. Do not tighten the screws yet



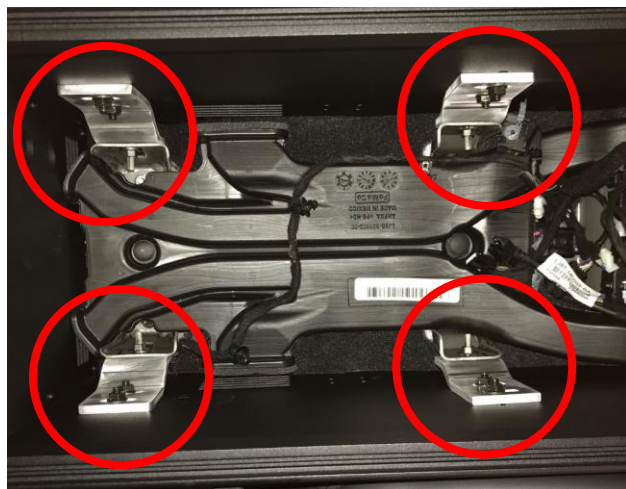
Step 17

Attach the wireless charger plate to the console shell using the #8-32 x 0.3125" screws provided. Connect all cables



Step 18

Remove the middle and rear mounting brackets from the PMT console and install on the OEM console brackets using the OEM bolts as shown



INSTALLATION INSTRUCTIONS

Step 19

Carefully move the PMT console into place



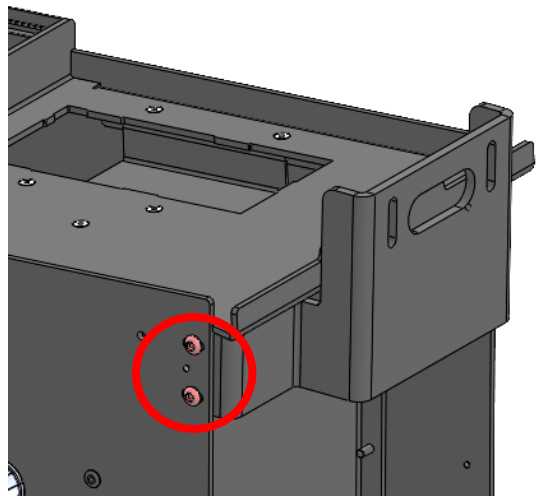
Step 20

Install the 2 OEM bolts shown to attach the PMT console to the dash



Step 21

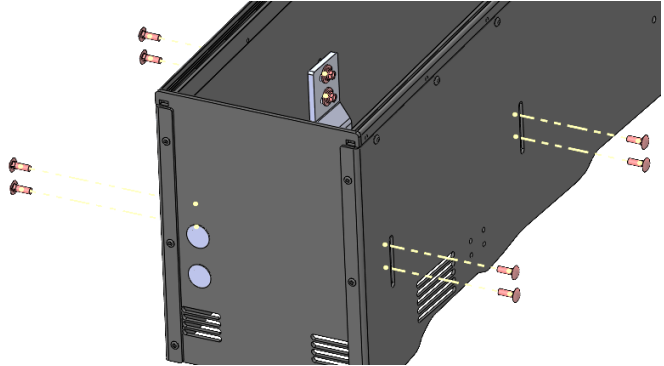
Tighten the 4 front console bracket bolts



INSTALLATION INSTRUCTIONS

Step 20

Connect the console to the middle and rear console brackets with the 8 carriage bolts provided



Step 21

Install the control module on the driver's side of the console as shown using the #8-32 x 0.5" screws and Nylok nuts provided



Step 22

Install the shifter plate into the console and connect all cables



INSTALLATION INSTRUCTIONS

Step 23

Install the passenger side trim panel as shown using the #6-32 x 0.25" screws provided



Step 24

Install the driver's side trim panel using the #6-32 x 0.25" screws provided. Be sure to re-install the OEM bolt near the accelerator pedal that was removed during Step 8



Step 25

Install any faceplates and accessories to complete the installation of the PMT console. The PMT Face Plate Installation Guide can be found at

<https://www.precisionmounts.com/product-information>