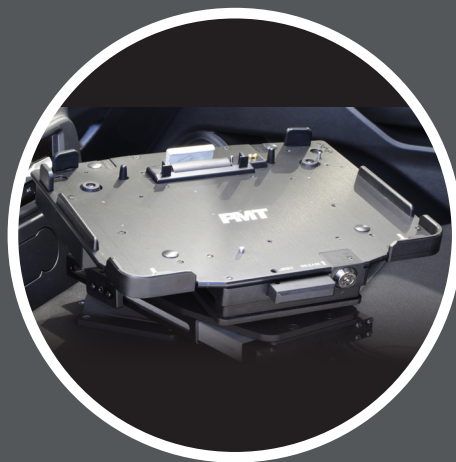




Panasonic DOCKING STATIONS

FOR YOUR LAPTOP AND TABLET



PMT precision
mounting
technologies



DOCKING STATION FOR PANASONIC TOUGHBOOK® 20

ITEM NUMBERS:

AS7.P020.100 Full NO RF
AS7.P020.102 Full DUAL RF
AS7.P020.104 No Electronics Cradle
AS7.P020.200 Full NO RF with Screen Lock
AS7.P020.202 Full DUAL RF with Screen Lock
AS7.P020.104 No Electronics Cradle with Screen Lock
AS7.P020.600 Lite NO RF
AS7.P020.602 Lite DUAL RF
AS7.P020.610 Lite NO RF with Screen Lock
AS7.P020.612 Lite DUAL RF with Screen Lock

- Compatible with Panasonic Toughbook® 20 laptops
- 'Full' or 'Lite' configuration available, 'Lite' removes video output connector ports
- Port replication includes: VGA, HDMI, Serial RS-232, Ethernet, USB 3.0 (x2)
- Integrated docking connector protection and safe guards reduce device damage
- Optional patented screen lock/support arm deters theft and reduces device wear and tear
- Optional RF for WiFi, GPS or cellular
- Front facing ports keeps cables within footprint of the dock
- Integrated cable restraint / cable management system
- Extreme compact size preserves cabin space and ensures user safety
- CNC machined aluminum construction
- Auto-latching feature for operator safety
- Floating connector design ensures reliable operation
- Convenient, front-located push-to-release latch
- Flexible non-capture locking mechanism allows use with or without a key
- Features OEM Panasonic electronics
- Available with power indicator light when purchased with PSU
- Available in no-electronics cradle version
- 3-Year Limited Warranty

CERTIFICATES & TESTING:

- Panasonic Toughbook® Certified
- ROHS, FCC, CE
- MIL-STD 810G Shock/Vibration
- SAE J1455 Crash Test
- Cycle Tested – Docking Mechanism
- Environmental Tested – High/Low Temperature, Humidity

NOTE: Final part numbers may vary based on region for all Panasonic product



DOCKING STATION FOR PANASONIC TOUGHBOOK® 33 LAPTOP

ITEM NUMBERS:

AS7.P033.500 Full NO RF
AS7.P033.502 Full DUAL RF
AS7.P033.504 No Electronics Cradle
AS7.P033.510 Full NO RF with Screen Lock
AS7.P033.512 Full DUAL RF with Screen Lock
AS7.P033.514 No Electronics Cradle with Screen Lock
AS7.P033.600 Lite NO RF
AS7.P033.602 Lite DUAL RF
AS7.P033.610 Lite NO RF with Screen Lock
AS7.P033.612 Lite DUAL RF with Screen Lock

- Compatible with Panasonic Toughbook® 33 laptops
- 'Full' or 'Lite' configuration available, 'Lite' removes video output connector ports
- Port replication includes: VGA, HDMI, USB 2.0 (x4), USB 3.0 (x2), Ethernet (x2), Serial RS-232
- Integrated docking connector protection and safe guards reduce device damage
- Optional screen lock module deters theft
- Optional screen support arm reduces device wear and tear (sold separately)
- Optional RF for WiFi, GPS or cellular
- Front facing ports keeps cables within footprint of the dock
- Integrated cable restraint / cable management system
- Auto-latching feature for operator safety
- Extreme compact size preserves cabin space and ensures user safety
- CNC machined aluminum construction
- Floating connector design ensures reliable functionality
- Convenient, front-located push-to-release latch
- Flexible non-capture locking mechanism allows use with or without a key
- Features OEM Panasonic electronics
- Available in no-electronics cradle version
- 3-Year Limited Warranty

CERTIFICATES & TESTING:

- Panasonic Toughbook® Certified
- ROHS, FCC, CE
- MIL-STD 810G Shock/Vibration
- SAE J1455 Crash Test
- Cycle Tested – Locking and Docking Mechanism
- Environmental Tested – High/Low Temperature, Humidity



DOCKING STATION FOR PANASONIC TOUGHBOOK® 40 LAPTOP

ITEM NUMBERS:

AS7.P040.100 Lite NO RF
AS7.P040.102 Lite QUAD RF
AS7.P040.104 No Electronics Cradle
AS7.P040.110 Full NO RF
AS7.P040.112 Full QUAD RF

- Compatible with Panasonic Toughbook® 40 laptops
- 'Full' or 'Lite' configuration available, 'Lite' removes video output connector ports
- Port replication includes: HDMI, USB 2.0 (x2), USB 3.2 Type-A, USB Type-C (x3) Ethernet (x2), Serial RS-232
- Integrated docking connector protection and safe guards reduce device damage
- Optional screen support arm reduces device wear and tear (sold separately)
- Optional RF for WiFi, GPS or cellular
- Rear facing ports keeps cables within footprint of the dock via integrated cable restraint / cable management system
- Auto-latching feature for operator safety
- Extreme compact size preserves cabin space and ensures user safety
- CNC machined aluminum construction
- Floating connector design ensures reliable functionality
- Convenient, front-located push-to-release latch with docked/undocked visual indicator
- Flexible non-capture locking mechanism allows use with or without a key
- Features OEM Panasonic electronics
- Available in no-electronics cradle version
- 3-Year Limited Warranty

CERTIFICATES/TESTING PENDING:

- Panasonic Toughbook® Certified
- ROHS, FCC, CE
- MIL-STD 810H Shock/Vibration
- SAE J1455 Crash Test
- Cycle Tested – Locking and Docking Mechanism
- Environmental Tested – High/Low Temperature, Humidity





DOCKING STATION FOR PANASONIC TOUGHBOOK® 55

ITEM NUMBERS:

AS7.P055.100 Full NO RF
AS7.P055.102 Full DUAL RF
AS7.P055.104 No Electronics Cradle
AS7.P055.600 Lite NO RF
AS7.P055.602 Lite DUAL RF

- Compatible with Panasonic Toughbook® 54 and Toughbook® 55 laptops
- 'Full' or 'Lite' configuration available, 'Lite' removes video output connector ports
- Port replication includes: VGA, HDMI, USB 3.0 (x2), Ethernet, Serial RS-232
- Integrated docking connector protection and safe guards reduce device damage
- Optional screen support arm reduces device wear and tear (sold separately)
- Optional RF for WiFi, GPS or cellular
- Rear facing ports keeps cables within footprint of the dock via integrated cable restraint / cable management system
- Auto-latching feature for operator safety
- Extreme compact size preserves cabin space and ensures user safety
- CNC machined aluminum construction
- Floating connector design ensures reliable functionality
- Convenient, front-located push-to-release latch
- Flexible non-capture locking mechanism allows use with or without a key
- Features OEM Panasonic electronics
- Available in no-electronics cradle version
- 3-Year Limited Warranty

CERTIFICATES & TESTING:

- Panasonic Toughbook® Certified
- ROHS, FCC, CE
- MIL-STD 810G Shock/Vibration
- SAE J1455 Crash Test
- Cycle Tested – Locking and Docking Mechanism
- Environmental Tested – High/Low Temperature, Humidity



DOCKING STATION FOR PANASONIC TOUGHBOOK® 33 TABLET

ITEM NUMBERS:

AS7.P033.100 Lite NO RF
AS7.P033.102 Lite DUAL RF
AS7.P033.104 No Electronics Cradle
AS7.P033.110 Full NO RF
AS7.P033.112 Full DUAL RF

- Compatible with Panasonic Toughbook® 33 tablets without extended batteries or rear-mounted hand straps
- 'Full' or 'Lite' configuration available, 'Lite' removes video output connector ports
- Port replication includes: VGA, HDMI, USB 2.0 (x4), USB 3.0 (x2), Ethernet (x2), Serial RS-232
- Optional RF for WiFi, GPS or cellular
- Integrated docking connector protection and safe guards reduce device damage
- Upward facing ports keeps cables within footprint of the dock
- Integrated cable restraint / cable management system
- Convenient one handed latch operating system for operator safety
- Extreme compact size preserves cabin space and ensures user safety
- CNC machined aluminum construction
- Floating connector design ensures reliable functionality
- Flexible non-capture locking mechanism allows use with or without a key
- Features OEM Panasonic electronics
- Available in no-electronics cradle version
- 3-Year Limited Warranty

CERTIFICATES & TESTING:

- Panasonic Toughbook® Certified
- ROHS, FCC, CE
- MIL-STD 810G Shock/Vibration
- SAE J1455 Crash Test
- Cycle Tested – Locking and Docking Mechanism
- Environmental Tested – High/Low Temperature, Humidity



DOCKING STATION FOR PANASONIC TOUGHBOOK G2

ITEM NUMBERS:

AS7.P222.100 Full NO RF
AS7.P222.102 Full DUAL RF
AS7.P222.104 No Electronics Cradle
AS7.P222.120 Lite NO RF
AS7.P222.122 Lite DUAL RF

- Compatible with Panasonic Toughbook G2 tablets
- 'Full' or 'Lite' configuration available, 'Lite' removes HDMI video and front USB connector ports
- Port replication includes: HDMI (x2), USB 3.2 5Gbps Type A (x2), USB 2.0 Type A (x2), USB 2.0 Type A (x2 front), Gigabit Ethernet (VLAN), Serial RS-232
- Optional Dual RF (SMA) for WiFi, GPS or cellular
- CNC machined aluminum construction for ultimate rugged performance
- Genuine Panasonic electronics for maximum reliability
- Floating connector pin design for maximum connectivity responsiveness
- Low profile footprint for increased usable cabin space and maximum operator safety and comfort
- One handed operation for simple and fast docking and undocking
- Key lockable for added theft deterrence
- Top facing ports with integrated cable management for an organized and tidy installation
- Slots for device cooling fan ventilation
- VESA 75mm mounting pattern for compatibility with a variety of PMT motion attachments
- Upward facing ports keeps cables within footprint of the dock
- Available in no-electronics cradle version
- 3-Year Limited Warranty

CERTIFICATES & TESTING:

- Panasonic Toughbook® Certified
- MIL STD 810 G: CHG1
- Vibration & Shock
- Cycle Latch/Unlatch 30,000 cycles
- Shock Crash Test Simulated 30mph sled crash test
- Environmental
- FCC, CE, UKCA, RoHS



DOCKING STATION FOR PANASONIC TOUGHBOOK G1 G2

ITEM NUMBERS:

AS7.P201.100 Full NO RF
AS7.P201.102 Full DUAL RF
AS7.P201.104 No Electronics Cradle
AS7.P201.120 Lite NO RF
AS7.P201.122 Lite DUAL RF
AS7.P201.200 Full Extended NO RF
AS7.P201.202 Full Extended DUAL RF
AS7.P201.204 Extended No Electronics Cradle
AS7.P201.220 Lite Extended NO RF
AS7.P201.222 Lite Extended DUAL RF

- Compatible with Panasonic Toughbook G2 and Toughpad G1 tablets
- 'Full' or 'Lite' configuration available, 'Lite' removes video output connector ports
- Port replication includes: VGA, HDMI, USB 3.0 (x2), Ethernet, Serial RS-232
- Optional RF for WiFi, GPS or cellular
- Upward facing ports keeps cables within footprint of the dock
- Integrated cable restraint / cable management system
- Extreme compact size preserves cabin space and ensures user safety
- CNC machined aluminum construction
- Floating connector design ensures reliable functionality
- Convenient one handed latch operating system for operator safety
- Flexible non-capture locking mechanism allows use with or without a key
- Features OEM Panasonic electronics
- Available in no-electronics cradle version
- Available in extended version to accommodate extended batteries, handstraps etc.
- 3-Year Limited Warranty

CERTIFICATES/TESTING PENDING:

- ROHS, FCC, CE
- MIL-STD 810H Shock/Vibration
- SAE J1455 Crash Test
- Cycle Tested – Locking and Docking Mechanism
- Environmental Tested – High/Low Temperature, Humidity



DOCK AND CRADLE ACCESSORIES

ITEM NUMBERS:

AS7.P020.001 Toughbook® 20 Screen Lock Arm
AS7.P033.006 Toughbook® 33 Laptop Screen Lock Module
AS7.P033.007 Toughbook® 33 Laptop Dock Screen Support
AS7.P040.001 Toughbook® 40 Laptop Dock Screen Support
AS7.P055.002 Toughbook® 55 Side Screen Support

- Engineered to work specifically with PMT docks and cradles for seamless operation
- Screen support arm reduces device wear and tear
- Screen lock deters theft and on Toughbook® 20 reduces device wear and tear by also acting as a screen support
- Easy-release handle allows simple adjustment on Toughbook® 33, Toughbook® 40 and Toughbook® 55 screen support
- CNC machined aluminum construction
- Flexible non-capture locking mechanism on screen locks
- Limited Lifetime Warranty



POWER ADAPTERS

ITEM NUMBERS:

PS001 Panasonic Toughbook® 33, 54, 55: 11 - 16VDC Input 120W Output with LED
PS002 Panasonic Toughbook® 20: 11 - 16vdc Input 80W Output with LED
PS003 Panasonic Toughpad FZ-G1/M1/B2: 11 - 16VDC Input 80W Output
PS009 Panasonic Toughbook® 31: 12 - 16VDC Input 80W Output, Marine
PS011 Panasonic Toughpad FZ-G1/B2: 20 - 60VDC Input 80W Output, Potted, Forklift
PS012 Panasonic Toughpad FZ-G1/B2: 20 - 60VDC Input 80W Output, Forklift
PS013 Panasonic Toughbook® 20, Toughpad FZ-G1/M1/B2: 12 - 32VDC Input 80W Output, Forklift
PS014 Panasonic Toughbook® 30, 31, 54, 55: 12 - 16VDC Input 120W Output, 72" Cables
PS015 Panasonic Toughbook® 33, 54, 55: 12 - 16VDC Input 120W Output with LED, 72" Cables
PS016 Panasonic Toughbook® 33, 54, 55: 11 - 16VDC Input 120W Output with LED
PS017 Panasonic Toughbook® 33, 54, 55: 11 - 16VDC Input 120W Output with LED
PS018 Panasonic Toughbook® 30, 31, 33, 54, 55: 20 - 60VDC Input 120W Output

Panasonic DOCKING STATIONS

PMT

WWW.PRECISIONMOUNTS.COM

515 58th Ave SE, Calgary, Alberta, T2H 0P7 Canada
1.888.869.7652 | sales@precisionmounts.com