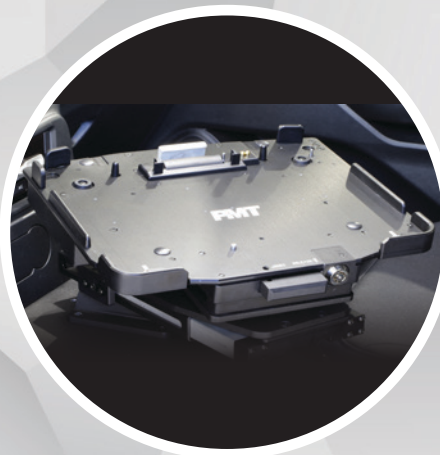


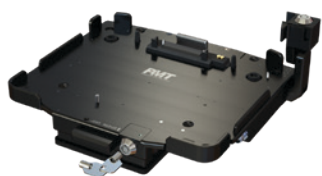


# Panasonic DOCKING STATIONS

FOR YOUR LAPTOP AND TABLET



**PMT** precision  
mounting  
technologies



### PANASONIC TOUGHBOOK® 20 DOCKING STATION

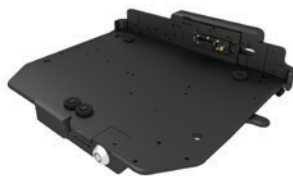
#### ITEM NUMBERS:

AS7.P020.100 NO RF  
AS7.P020.102 DUAL RF  
AS7.P020.104 No Electronics Cradle  
AS7.P020.100 NO RF with Screen Lock  
AS7.P020.102 DUAL RF with Screen Lock  
AS7.P020.104 No Electronics Cradle with Screen Lock

- Compatible with Panasonic Toughbook® 20 laptops
- Port replication includes: VGA, HDMI, Serial RS-232, Ethernet, USB 3.0 (x2)
- Integrated docking connector protection and safe guards reduce device damage
- Optional patented screen lock/support arm deters theft and reduces device wear and tear
- Optional RF for WiFi, GPS or cellular
- Front facing ports keeps cables within footprint of the dock
- Integrated cable restraint / cable management system
- Extreme compact size preserves cabin space and ensures user safety
- CNC machined aluminum construction
- Auto-latching feature for operator safety
- Floating connector design ensures reliable operation
- Convenient, front-located push-to-release latch
- Flexible non-capture locking mechanism allows use with or without a key
- Features OEM Panasonic electronics
- Available with power indicator light when purchased with PSU
- Available in no-electronics cradle version
- 3-Year Limited Warranty

#### CERTIFICATES & TESTING:

- Panasonic Toughbook® Certified
- ROHS, FCC, CE
- MIL-STD 810G Shock/Vibration
- SAE J1455 Crash Test
- Cycle Tested – Docking Mechanism
- Environmental Tested – High/Low Temperature, Humidity



### PANASONIC TOUGHBOOK® 31 DOCKING STATION\*

#### ITEM NUMBERS:

AS7.P031.100-1 NO RF  
AS7.P031.101-1 SINGLE RF  
AS7.P031.102-1 DUAL RF  
AS7.P030.104-1 No Electronics Cradle

- Compatible with Panasonic Toughbook® 31 laptops
- Port replication includes: VGA, USB 2.0 (x5), Ethernet (x2), Speaker/Mic, Serial RS-232 (x2)
- Optional RF for WiFi, GPS or cellular
- Front facing ports keeps cables within footprint of the dock
- Integrated cable restraint / cable management system
- Extreme compact size preserves cabin space and ensures user safety
- CNC machined aluminum construction
- Floating connector design ensures reliable functionality
- Simple operation side lever for easy one handed operation
- Captured key locking mechanism
- Features OEM Panasonic electronics
- Available in no-electronics cradle version
- 3-Year Limited Warranty

#### CERTIFICATES & TESTING:

- ROHS
- MIL-STD 810G Shock/Vibration
- SAE J1455 Crash Test
- Environmental Tested – High/Low Temperature, Humidity

*\*Supply Limited*



### PANASONIC TOUGHBOOK® 33 LAPTOP DOCKING STATION

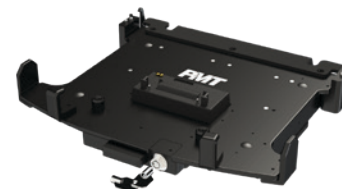
#### ITEM NUMBERS:

AS7.P033.500 NO RF  
AS7.P033.502 DUAL RF  
AS7.P033.504 No Electronics Cradle  
AS7.P033.510 NO RF with Screen Lock  
AS7.P033.512 DUAL RF with Screen Lock  
AS7.P033.514 No Electronics Cradle with Screen Lock

- Compatible with Panasonic Toughbook® 33 laptops
- Port replication includes: VGA, HDMI, USB 2.0 (x4), USB 3.0 (x2), Ethernet (x2), Serial RS-232
- Integrated docking connector protection and safe guards reduce device damage
- Optional screen lock module deters theft
- Optional screen support arm reduces device wear and tear (sold separately)
- Optional RF for WiFi, GPS or cellular
- Front facing ports keeps cables within footprint of the dock
- Integrated cable restraint / cable management system
- Auto-latching feature for operator safety
- Extreme compact size preserves cabin space and ensures user safety
- CNC machined aluminum construction
- Floating connector design ensures reliable functionality
- Convenient, front-located push-to-release latch
- Flexible non-capture locking mechanism allows use with or without a key
- Features OEM Panasonic electronics
- Available in no-electronics cradle version
- 3-Year Limited Warranty

#### CERTIFICATES & TESTING:

- Panasonic Toughbook® Certified
- ROHS, FCC, CE
- MIL-STD 810G Shock/Vibration
- SAE J1455 Crash Test
- Cycle Tested – Locking and Docking Mechanism
- Environmental Tested – High/Low Temperature, Humidity



### PANASONIC TOUGHBOOK® 55 DOCKING STATION

#### ITEM NUMBERS:

AS7.P055.100 NO RF  
AS7.P055.102 DUAL RF  
AS7.P055.104 No Electronics Cradle

- Compatible with Panasonic Toughbook® 54 and Toughbook® 55 laptops
- Port replication includes: VGA, HDMI, USB 3.0 (x2), Ethernet, Serial RS-232
- Integrated docking connector protection and safe guards reduce device damage
- Optional screen support arm reduces device wear and tear (sold separately)
- Optional RF for WiFi, GPS or cellular
- Rear facing ports keeps cables within footprint of the dock via integrated cable restraint / cable management system
- Auto-latching feature for operator safety
- Extreme compact size preserves cabin space and ensures user safety
- CNC machined aluminum construction
- Floating connector design ensures reliable functionality
- Convenient, front-located push-to-release latch
- Flexible non-capture locking mechanism allows use with or without a key
- Features OEM Panasonic electronics
- Available in no-electronics cradle version
- 3-Year Limited Warranty

#### CERTIFICATES & TESTING:

- Pending Panasonic Toughbook® Certified
- ROHS, FCC, CE
- MIL-STD 810G Shock/Vibration
- SAE J1455 Crash Test
- Cycle Tested – Locking and Docking Mechanism
- Environmental Tested – High/Low Temperature, Humidity







## PANASONIC TOUGHBOOK® 33 TABLET DOCKING STATION

### ITEM NUMBERS:

AS7.P033.100 Lite NO RF  
AS7.P033.102 Lite DUAL RF  
AS7.P033.104 No Electronics Cradle  
AS7.P033.110 Full NO RF  
AS7.P033.112 Full DUAL RF

- Compatible with Panasonic Toughbook® 33 tablets without extended batteries or rear-mounted hand straps
- Full port replication includes: VGA, HDMI, USB 2.0 (x4), USB 3.0 (x2), Ethernet (x2), Serial RS-232
- Lite port replication includes: USB 2.0 (x4), USB 3.0 (x2), Ethernet (x2), Serial RS-232
- Optional RF for WiFi, GPS or cellular
- Integrated docking connector protection and safe guards reduce device damage
- Upward facing ports keeps cables within footprint of the dock
- Integrated cable restraint / cable management system
- Convenient one handed latch operating system for operator safety
- Extreme compact size preserves cabin space and ensures user safety
- CNC machined aluminum construction
- Floating connector design ensures reliable functionality
- Flexible non-capture locking mechanism allows use with or without a key
- Features OEM Panasonic electronics
- Available in no-electronics cradle version
- 3-Year Limited Warranty

### CERTIFICATES & TESTING:

- Panasonic Toughbook® Certified
- ROHS, FCC, CE
- MIL-STD 810G Shock/Vibration
- SAE J1455 Crash Test
- Cycle Tested – Locking and Docking Mechanism
- Environmental Tested – High/Low Temperature, Humidity

**NOTE:** Final part numbers may vary based on region for all Panasonic product



## PANASONIC TOUGHPAD FZ-G1 DOCKING STATION

### ITEM NUMBERS:

AS7.P001.100 NO RF  
AS7.P001.102 DUAL RF  
AS7.P001.103 No Electronics Locking Cradle  
AS7.P001.104 No Electronics Slimline Cradle  
AS7.P001.200 Extended NO RF  
AS7.P001.202 Extended DUAL RF  
AS7.P001.204 Extended No Electronics Locking Cradle  
AS7.P001.206 Extended No Electronics Slimline Cradle

- Compatible with Panasonic Toughpad FZ-G1 tablets
- Port replication includes: VGA, HDMI, USB 3.0 (x2), Ethernet, Serial RS-232
- Optional RF for WiFi, GPS or cellular
- Upward facing ports keeps cables within footprint of the dock
- Integrated cable restraint / cable management system
- Extreme compact size preserves cabin space and ensures user safety
- CNC machined aluminum construction
- Floating connector design ensures reliable functionality
- Convenient one handed latch operating system for operator safety
- Flexible non-capture locking mechanism allows use with or without a key
- Features OEM Panasonic electronics
- Available in no-electronics cradle version
- Available in extended version to accommodate extended batteries, handstraps etc.
- 3-Year Limited Warranty

### CERTIFICATES & TESTING:

- ROHS
- MIL-STD 810G Shock/Vibration
- SAE J1455 Crash Test
- Environmental Tested – High/Low Temperature, Humidity



## PANASONIC TOUGHPAD FZ-M1/B2 DOCKING STATION

### ITEM NUMBERS:

AS7.P002.200 Full NO RF  
AS7.P002.202 Full DUAL RF  
AS7.P002.203 No Electronics Cradle  
AS7.P002.210 Lite NO RF  
AS7.P002.212 Lite DUAL RF

- Compatible with Panasonic Toughpad FZ-M1/B2 tablets
- Full port replication includes: VGA, HDMI, USB 3.0 (x2), Ethernet, Serial RS-232
- Lite port replication includes: USB 2.0 (x2), Ethernet
- Optional RF for WiFi, GPS or cellular
- Rear downward facing ports keeps cables within footprint of the dock via integrated cable restraint / cable management system
- Extreme compact size preserves cabin space and ensures user safety
- CNC machined aluminum construction
- Convenient, side-located push-to-release latch
- Flexible non-capture locking mechanism allows use with or without a key
- Features OEM Panasonic electronics
- Available in no-electronics cradle version
- 3-Year Limited Warranty

### CERTIFICATES & TESTING:

- SAE J1455 Crash Test



## DOCK AND CRADLE ACCESSORIES

### ITEM NUMBERS:

AS7.P020.001 Toughbook® 20 Screen Lock Arm  
AS7.P033.006 Toughbook® 33 Laptop Screen Lock Module  
AS7.P033.007 Toughbook® 33 Laptop Dock Screen Support  
AS7.P055.002 Toughbook® 55 Side Screen Support

- Engineered to work specifically with PMT docks and cradles for seamless operation
- Screen support arm reduces device wear and tear
- Screen lock deters theft and on Toughbook® 20 reduces device wear and tear by also acting as a screen support
- Easy-release handle allows simple adjustment on Toughbook® 33 and Toughbook® 55 screen support
- CNC machined aluminum construction
- Flexible non-capture locking mechanism on screen locks
- Limited Lifetime Warranty



## POWER SUPPLIES

### ITEM NUMBERS:

PS001 Panasonic Toughbook® 33, 54, 55: 11 - 16VDC Input 120W Output with LED  
PS002 Panasonic Toughbook® 20: 11 - 16Vdc Input 80W Output with LED  
PS003 Panasonic Toughpad FZ-G1/M1/B2: 11 - 16VDC Input 80W Output  
PS004 Panasonic Toughbook® 30, 31, 54, 55: 11 - 16VDC Input 120W Output  
PS009 Panasonic Toughbook® 31: 12 - 16VDC Input 80W Output, Marine  
PS011 Panasonic Toughpad FZ-G1/B2: 20 - 60VDC Input 80W Output, Potted, Forklift  
PS012 Panasonic Toughpad FZ-G1/B2: 20 - 60VDC Input 80W Output, Forklift  
PS013 Panasonic Toughbook® 20, Toughpad Fz-G1/M1/B2: 12 - 32VDC Input 80W Output, Forklift  
PS014 Panasonic Toughbook® 30, 31, 54, 55: 12 - 16VDC Input 120W Output, 72" Cables  
PS015 Panasonic Toughbook® 33, 54, 55: 12 - 16VDC Input 120W Output with LED, 72" Cables  
PS016 Panasonic Toughbook® 33, 54, 55: 11 - 16VDC Input 120W Output with LED  
PS017 Panasonic Toughbook® 33, 54, 55: 11 - 16VDC Input 120W Output with LED  
PS018 Panasonic Toughbook® 30, 31, 33, 54, 55: 20 - 60VDC Input 120W Output

# Panasonic DOCKING STATIONS



[WWW.PRECISIONMOUNTS.COM](http://WWW.PRECISIONMOUNTS.COM)

515 58th Ave SE, Calgary, Alberta, T2H 0P7 Canada  
1.888.869.7652 | [sales@precisionmounts.com](mailto:sales@precisionmounts.com)